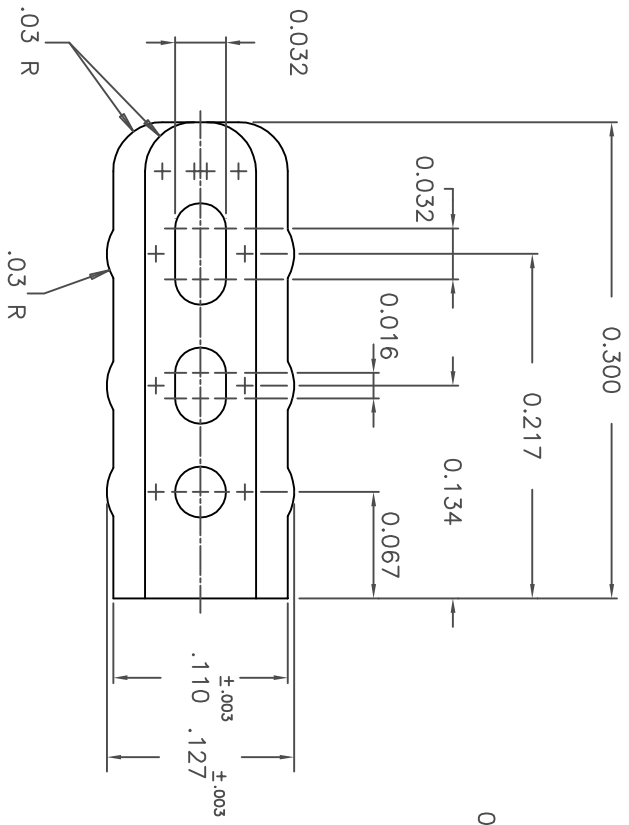


| | | | |
|----------------|-------------|-------|---|
| DRAWING NUMBER | 306-240-318 | ISSUE | 9 |
| PART NUMBER | 306-240-318 | | |



NOTES

- 1) MATERIAL: NYLON 6/6, 30% GLASS REINFORCED, COLOUR - NATURAL
- 2) MOULDED PART SHALL BE IN ACCORDANCE WITH EDAC SPECIFICATION #110-0211
- 3) THIS POLARIZING KEY IS USED FOR THE 306 SERIES CONNECTOR AS WELL AS VARIOUS OTHER CONNECTORS (E.G. 305, 307, 346, 746, ETC.)

ACAD REFERENCE NO.
30624001

306 SERIES POLARIZING KEY
PART NUMBER 306-240-318

| TOLERANCE UNLESS NOTED | DIMENSION | TOLERANCE |
|------------------------|-----------|-----------|
| | .00 | ± .010 |
| | .000 | ± .005 |
| | .0000 | ± ---- |
| | ANGULAR | ± ---- |

DRAWING NOTES:
1) DO NOT SCALE DRAWING.
2) DIMENSIONS ARE IN INCHES AND INCLUDE THICKNESS OF PLATING.
3) ALL SCREW THREADS TO BE CLASS 2 FIT (AMSTD.) UNLESS OTHERWISE SPECIFIED.



EDAC INC
TORONTO, ONTARIO
CANADA
YOUR CONNECTION TO QUALITY & SERVICE

THESE DRAWINGS AND SPECIFICATIONS ARE THE PROPERTY OF EDAC INC. AND SHALL NOT BE REPRODUCED, OR COPIED OR USED AS THE BASIS FOR THE MANUFACTURE OR SALE OF APPARATUS WITHOUT WRITTEN PERMISSION.

| | |
|-------------------------------|-----------------|
| DRAWN: R. WEAVER | DATE: JUL 15/80 |
| CHECKED: | DATE: |
| ENG. APPR.: | DATE: |
| SCALE: 10:1 | SHEET 1 OF 1 |
| DRAWING NUMBER 306-240-318 | ISSUE 9 |

| |
|--|
| RECOMMENDED DISPOSITION OF STOCK (PRIOR ISSUE PARTS) |
| <input type="checkbox"/> SCRAP <input type="checkbox"/> INSPECT <input type="checkbox"/> REWORK <input type="checkbox"/> USE AS IS <input type="checkbox"/> SEE ENGINEERING MEMO |
| ISSUE NUMBER |
| ORIGINAL (1) |
| REDRAWN ON CAD WITH VARIOUS REVISIONS ECN #89-083 |
| KL AUG 18/89 (7) |
| DIM. .120±.003 WAS .118±.003 |
| F.BRIONES OCT.6/98 (8) |
| DIM. .127±.003 WAS .120±.003 |
| F.BRIONES JUN. 27/08 (9) |