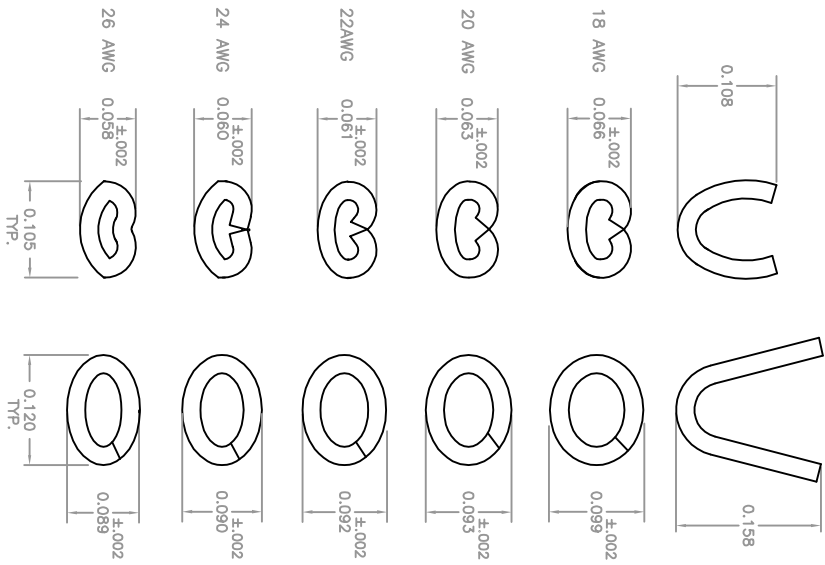
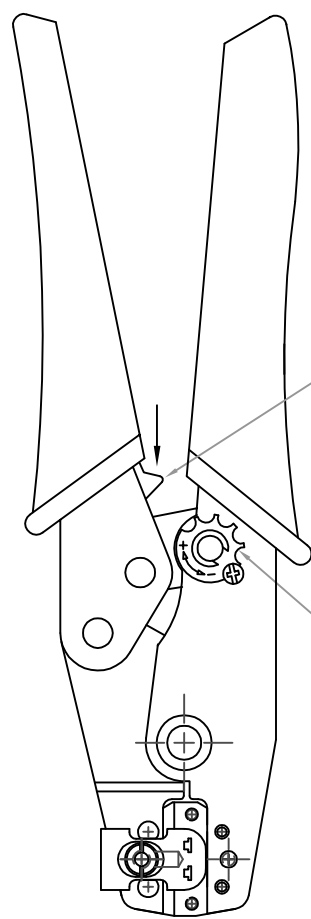


CONDUCTOR CRIMP
FORM

INSULATOR CRIMP
FORM

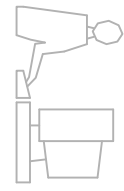


TO OPEN PARTIALLY CLOSED TOOL
PUSH THIS LATCH IN THE DIRECTION
OF THE ARROW.



STAR-WHEEL

THIS IS A C.A.D. GENERATED DRAWING
DO NOT MAKE MANUAL REVISIONS TO MASTER.



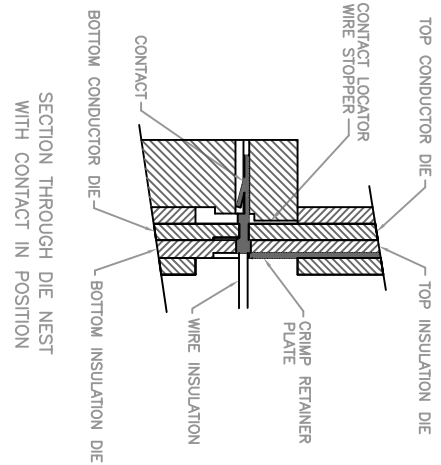
ISSUE NUMBER
ORIGINAL
1

WIRE AWG	HARD DRAWN WIRE	CRIMP STRENGTH	SOFT WIRE	AREA IN.SQ.
18 AWG	41 LBS	36 LBS	.000128	
20 AWG	24 LBS	23 LBS	.000804	
22 AWG	17 LBS	14.5 LBS	.000503	
24/26 AWG	12/7.5 LBS	9.4/5.9 LBS	.000317 .000198	
28 AWG	3.7 LBS	3 LBS	.000125	

NOTES:

- 1- THIS HAND TOOL IS DESIGNED FOR CRIMPING 18 TO 26 AWG WIRES TO EDAC CONTACT P/N 516-290-590.
- 2- RISK OF ELECTRIC SHOCK - DO NOT USE THIS ON LIVE WIRE.
- 3- CRIMPING INSTRUCTIONS:
 - OPEN THE TOOL, PLACE THE CONTACT INTO THE CORRECT DIE NEST.
 - PARTIALLY CLOSE THE TOOL UNTIL THE CONTACT IS HELD IN PLACE. INSERT THE WIRE INTO THE CONTACT.
 - CLOSE THE TOOL UNTIL THE RATCHET RELEASES. REMOVE THE CRIMPED CONTACT.
- 4- ADJUSTMENT OF CRIMP FORCE (WHEN NECESSARY):
 - LOOSEN THE SCREW
 - ADJUST THE STAR-WHEEL BY TURNING FROM (-) TO(+).
 - CHECK THE PRELOAD AND THE CRIMP FORCE.

TOOL PART NUMBER: 516-280-201



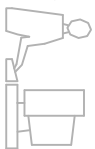
516 SERIES HAND CRIMP TOOL INSTRUCTIONS

EDAC INC
TORONTO, ONTARIO
CANADA

THESE DRAWINGS AND SPECIFICATIONS ARE THE PROPERTY OF EDAC INC. AND SHALL NOT BE REPRODUCED, OR COPIED OR USED AS THE BASIS FOR THE MANUFACTURE OR SALE OF APPARATUS WITHOUT WRITTEN PERMISSION.

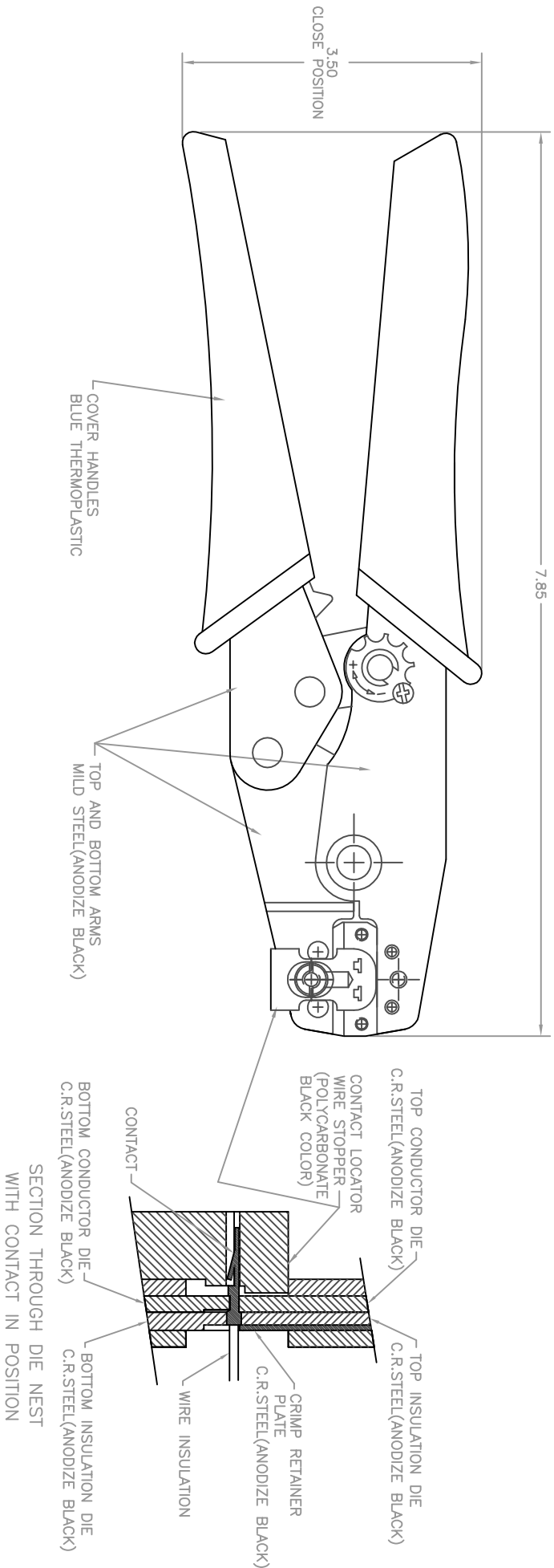
ACAD REFERENCE NO.	51628211	
DRAWN: F. BRIONES	DATE: DEC.8/97	
CHECKED:	DATE:	
SCALE: N.T.S.	SHEET 1	OF 2
DRAWING NUMBER	516-280-201	
	ISSUE	1

THIS IS A C.A.D. GENERATED DRAWING
DO NOT MAKE MANUAL REVISIONS TO MASTER.



ISSUE NUMBER
ORIGINAL

1



TOOL PART NUMBER: 516-280-201

516 SERIES HAND CRIMP TOOL

ACAD REFERENCE NO. 51628211

DRAWN: DATE: FEB.20/01

CHECKED: DATE:

SCALE: N.T.S. SHEET 2 OF 2

DRAWING NUMBER ISSUE

516-280-201 1



EDAC INC
TORONTO, ONTARIO
CANADA

YOUR CONNECTION TO QUALITY & SERVICE

THESE DRAWINGS AND SPECIFICATIONS
ARE THE PROPERTY OF EDAC, INC., AND
SHALL NOT BE REPRODUCED OR COPIED
OR USED AS THE BASIS FOR THE
MANUFACTURE OR SALE OF APPARATUS
WITHOUT WRITTEN PERMISSION.