

Features:

- High density 96 Contact 3 Row Metal-to-Metal Connector on 2.54mm (.100") Grid
- Contacts: 90° Bend
- Contact Material and Finish: CA725 with selective gold plating: 260- Gold Flash Plating and tin on tails 360- 15u" of Gold Plating 660- 30u" of Gold Plating
- Contact Tails: 0.7 x 0.3mm (.027" x .012")
- Contact Spacing: 2.54 x 2.54mm (.100" x .100") single, double or triple rows; or 2.54 x 5.08mm (.100" x .200") single, double or triple rows.
- Available in: 8, 16, 24, 32, 48, 64, and 96 positions
- Connectors designed to meet DIN 41612-C specifications



THIS SERIES FULLY CONFORMS TO THE
EUROPEAN UNION DIRECTIVES 2002/95/EC
AND 2002/96/EC FOR RoHS COMPLIANCY



YOUR CONNECTION TO QUALITY & SERVICE

EDAC INC
TORONTO, ONTARIO
CANADA

THESE DRAWINGS AND SPECIFICATIONS
ARE THE PROPERTY OF EDAC INC. AND
SHALL NOT BE REPRODUCED, OR COPIED
OR USED AS THE BASIS FOR THE
MANUFACTURE OR SALE OF APPARATUS
WITHOUT WRITTEN PERMISSION.

494 Series Metal-To-Metal DIN Connector PART NUMBER: 494-024-260-322

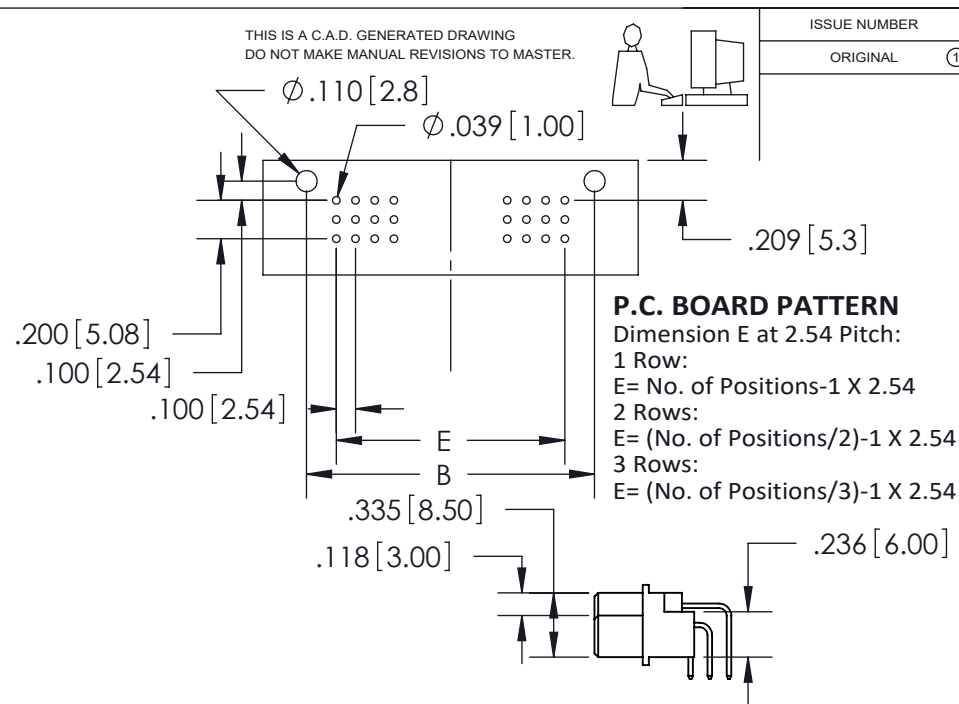
ACAD REFERENCE NO. 494 -ENG-MASTER

DRAWN: R.STA.MONICA DATE: JUL. 5/10

CHECKED: DATE:

SCALE: NTS SHEET 1 OF 1

DRAWING NUMBER 494 -ENG-MASTER ISSUE 1



P.C. BOARD PATTERN

Dimension E at 2.54 Pitch:

1 Row:

E= No. of Positions-1 X 2.54

2 Rows:

E= (No. of Positions/2)-1 X 2.54

3 Rows:

E= (No. of Positions/3)-1 X 2.54

Specifications:

- Current Rating: 2 Amperes @ 20°C
- Contact Material: Brass
- Contact Plating: Selective Gold Plating
- Contact Resistance: 30 milliohms, maximum
- Insulator Material: 30% Glass Filled PBT, UL 94V-0
- Insulation Resistance: Mated - 1000 Mega (10⁶) ohms
- Dielectric Withstanding Voltage: 1000 V.A.C RMS
- Basic Grid: 2.54mm (.100")
- Operating Temperature: -55°C to +105°C