



Wire to Wire & Wire to Board Connectors

EDAC

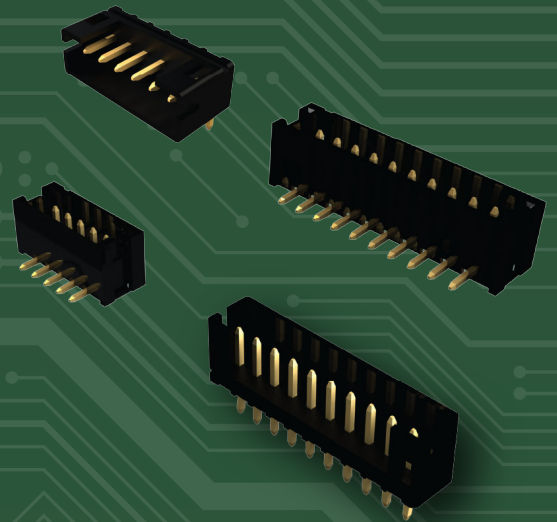


Wire to Wire & Wire to Board Connectors

EDAC wire to board and wire to wire connectors provide a reliable and economical connection. These shrouded headers are available in a variety of positions. Options in vertical and right angle orientations with through hole, surface mount, wire hole, wire wrap, and crimp contact terminations are available. Compatible with leading industry connectors as drop in replacements.

Features

- 0.079" (2.00mm) and 0.200" (5.08mm) contact spacing available
- For use with PC board thickness: 0.047" (1.19mm) to 0.062" (1.60mm)
- Low profile insulator body: 0.185" (4.70mm) width, 0.240" (6.10mm) height
- Contact terminations include PC tail, SMT, wire hole, wire wrap, and crimp
- Top entry or side entry configurations available for 140 series
- 140 series designed for high-density connection of internal wires to the PCB



Wire to Wire & Wire to Board Connectors

Series	Contact Pitch	No. of Contacts	Current Rating	Retention	Contact Termination
140	0.079" (2.00mm)	2 - 16	2 amps	Yes	PC Tail, SMT
520	0.200" (5.08mm)	2 or 3	8.5 amps	Yes	PC Tail, Wire Hole, Wire Wrap, Crimp

Economical wire to board interconnect solution with shrouded headers

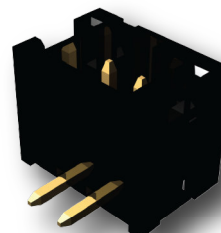
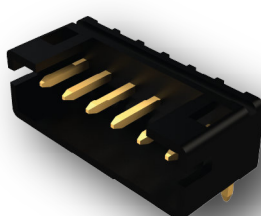
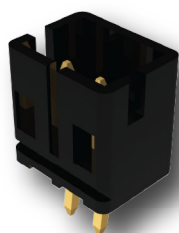
Easily customized to meet any design parameters



EDAC

For More Information

edac.net



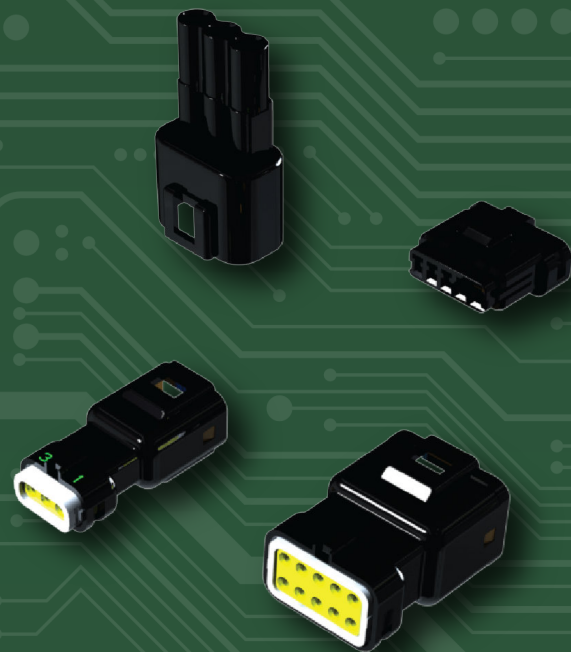


Waterproof Wire to Wire & Wire to Board

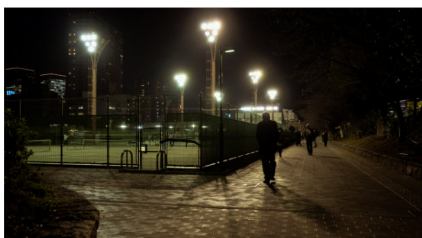
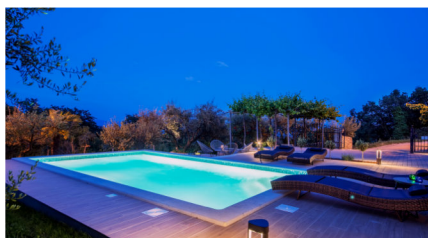
The EDAC waterproof plug and socket connectors provides a reliable interconnect solution in harsh environments. Single or double latch insulator designs ensure superior shock and vibration resistance. A variety of styles are available for different wire gauge applications. These utilize simple crimp and poke contacts. Optional contact plugs are available for use when all contact positions are not required. Additional contacts and wires can then be added in the field.

Features

- Current rating available from 3 to 10 amps for use with wire sizes from 28 to 14 AWG
- 560 and 572 series offer our double latch solution
- Available in wire-to-wire and wire-to-board options
- True crimp and poke solution
- Internal polarization to prevent mismatching
- Available with wire already installed
- Waterproof grade IP52 and IP67 certified



EDAC

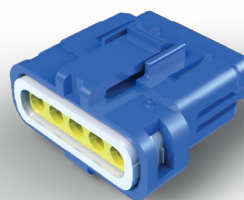
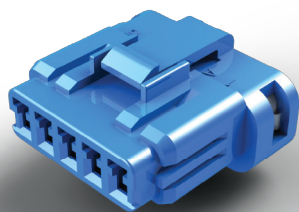


Waterproof Wire to Wire & Wire to Board

Series	Contact Pitch	No. of Contacts	Current Rating	Retention	Ingress Protection	Polarization	Contact Termination
560	0.09" (2.50mm)	2, 3, 5	3 amps	Yes, Double Latch	IP67	Yes	PC Tail, Crimp
565	0.09" (2.50mm)	2, 3, 5	3 amps	Yes, Single Latch	IP67	Yes	PC Tail, Crimp
566	0.08" (2.00mm)	2, 3, 4, 6	2 amps	Yes, Single Latch	IP67	Yes	PC Tail, Crimp
567	0.20" X 0.23" (5.00mm X 5.90mm)	1, 2, 3, 4, 6, 9	10 amps	Yes, Double Latch	IP52	Yes	Crimp
568	N/A	1	10 amps	Yes, Double Latch	IP52	Yes	Crimp
570	0.23" (5.80mm)	1, 2, 3	10 amps	Yes, Single Latch	IP67	Yes	PC Tail, Crimp
572	0.23" (5.80mm)	1, 2, 3	10 amps	Yes, Double Latch	IP67	Yes	PC Tail, Crimp

Economical wire to board interconnect solution with shrouded headers

Easily customized to meet any design parameters



EDAC

For More Information

edac.net



EDAC

161 Alden Road
Unit 7 & 8
Markham, Ontario
Canada
L3R 3W7
Tel: +1 416 754 3322
E-mail: support@edac.net

EDAC Europe

12 Fleming Close,
Park Farm North,
Wellingborough,
United Kingdom
NN8 6UF
Tel: (44) 1933-427300
Fax: (44) 1933-677611
E-mail: enquiries@edaceurope.net

Established in 1966, EDAC soon became a world leader in providing connectors for card edge and rack and panel applications. Since then, we have expanded our product offering to include one of the widest ranges of interconnect solutions in the world. Products include D-Sub, RJ45, USB, HDMI, inline plug and socket, headers, spring loaded pogo pin, and waterproof connectors. Cable assemblies and custom solutions are also available. Our innovation guides us into new customer opportunities as we challenge the status quo. This belief resonates throughout the organization and results in exceptional quality service globally.



Connect with Us . . . Experience Makes the Difference