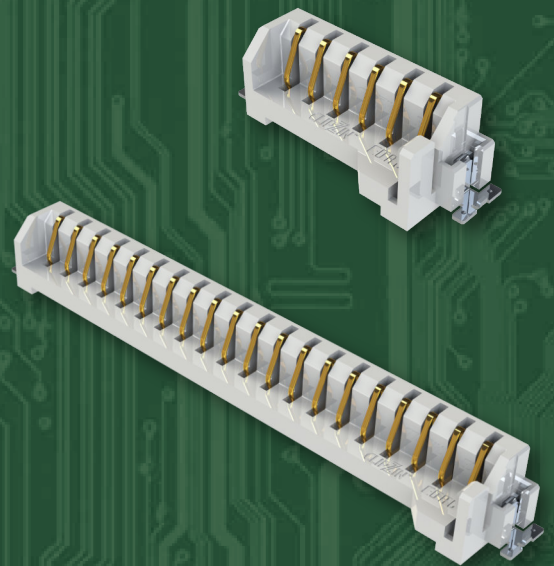


ClipZin SMT Card Edge Connectors

EDAC's Clipzin is a PCB-mounted edge connector that allows single board modules to be fixed to the PCB. Featuring a low-profile, surface mount installation, the Clipzin will allow rapid connection and disconnection of the module, while a retention clip ensures that the board will not unmate during use. This makes it the ideal solution for the development environment, while also providing the security required for production applications.

Features

- Available in 6, 8, 17, and 20-way positions in surface mount
- Eliminates the need to solder pin headers and mount single board modules to the PCB
- Enables quick mating and un-mating to single castellated module boards allowing for rework on exiting board or to swap out for a new one to expedite product testing and programming
- Retention clips to further secure the boards to the PCB
- Reliable and consistent connection between contacts and edge of boards



www.edac.net



EDAC



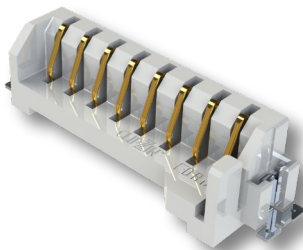
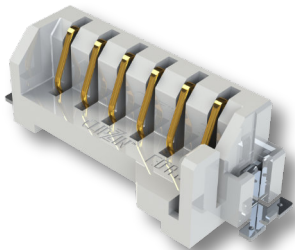


ClipZin SMT Card Edge Connectors

Series	Contact Position Options	Latching	Current Rating	Terminal Plating	Terminal Material
299	6, 8, 17, & 20	Yes	1A Max / Contact	Gold Flash	Phosphor Bronze

Up to 500 mating cycles with quick secure latching

Built to last in any environment with operating temperatures of -40°C to +85°C



For More Information

www.edac.net

