

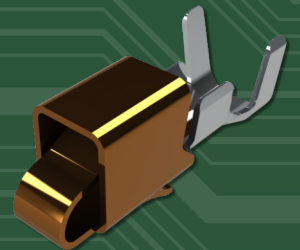
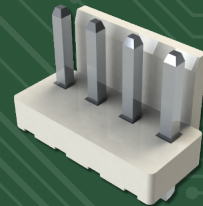
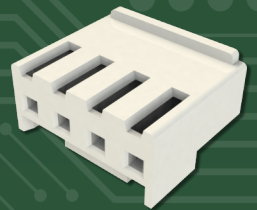


# Wire-to-Wire & Wire-to-Board Connectors

EDAC wire-to-board and wire-to-wire connectors provide a reliable and economical connection. These shrouded headers are available in a variety of positions. Options in vertical and right angle orientations with through hole, surface mount, wire hole, wire wrap, and crimp contact terminations are available. Compatible with leading industry connectors as drop in replacements.

## Features

- .079" (2.00mm), .098" (2.50mm), .156" (3.96mm), .200" (5.08mm) contact spacing available
- For use with multiple PC board thicknesses, including .047" (1.19mm) to .062" (1.60mm)
- Contact terminations include PC tail, SMT, wire hole, wire wrap, and crimp
- Top entry or side entry configurations available
- Crimp contacts designed for a range of wire gauges from 30-18 AWG
- Low-profile insulator body for space-saving on PCBs
- The 14X range offers a compact and lightweight build with fine-pitch options available
- Higher current options are available to support higher power demands



# EDAC



## Wire-to-Wire & Wire-to-Board Connectors

Series	Connector System	Contact Pitch	No. of Contacts	Current Rating	Retention	Contact Termination
140	Wire-to-Board	.079" (2.00mm)	2 - 16	2 amps	Yes	PC Tail, SMT, Crimp
14K	Wire-to-Wire & Wire-to-Board	.098" (2.50mm)	2 - 16	3 amps	Yes	PC Tail, SMT, Crimp
14L	Wire-to-Board	.156" (3.96mm)	2 - 15	7 amps	Yes	PC Tail, Crimp
520	Wire-to-Wire	.200" (5.08mm)	2 or 3	8.5 amps	Yes	PC Tail, Wire Hole, Wire Wrap, Crimp

Economical wire to board interconnect solution with shrouded headers

Easily customized to meet any design parameters



# EDAC

For More Information

[edac.net](http://edac.net)

