

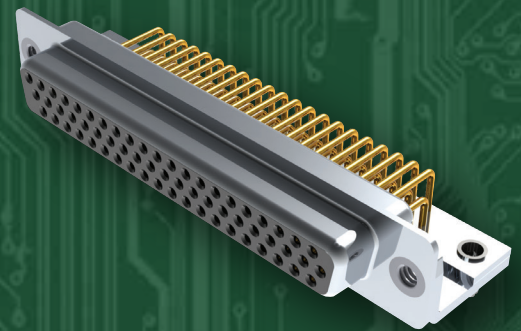


Machined D-Sub Connectors

The EDAC D-PIN family of D-Subminiature connectors are manufactured using precision machined contacts available from 9 to 62 positions. Standard and high density, with vertical and right angle body styles available. A number of mounting and contact plating options are available. The 5 amp current rating along with a wide operating temperature range provides for use in rugged environments.

Features

- 5 amp precision machined contacts
- Plug and receptacles in 9, 15, 25, 26, 37, 44, 50 and 62 positions
- Pin and socket contact mating design with P.C. tail termination
- Mounting options for panel mount or connector mating include through hole, threaded inserts, 4 prong board locks and removable threaded standoffs
- Wide operating temperature of -55°C to +125°C



EDAC

www.edac.net

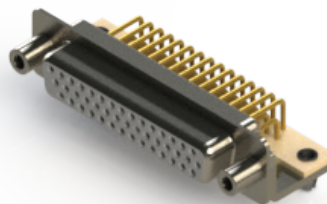
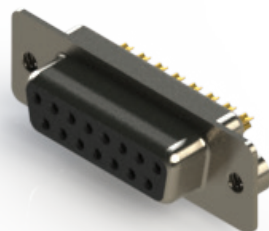
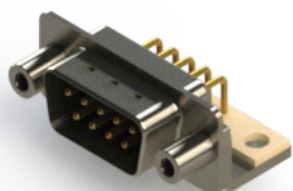


Machined D-Sub Connectors

Series M/F	No. of Contacts	Plating	No. of Contact Codes & Density	Ins. Color Options	Shell Plating Options	Flange Mtg. Options
621M/622M	9-50	Flash- 30u" gold	1 Std.	4	2	6
627M/628M	9-50	Flash- 30u" gold	3 Std.	4	2	6
629M/630M	9-50	Flash- 30u" gold	1 Std.	4	2	6
633M/634M	15-62	Flash- 30u" gold	1 High	2	2	6
637M/638M	15-62	Flash- 30u" gold	2 High	1	2	6

Widest range of options available to meet all design requirements

Industry standard foot prints for drop in replacements



EDAC

For More Information
www.edac.net

