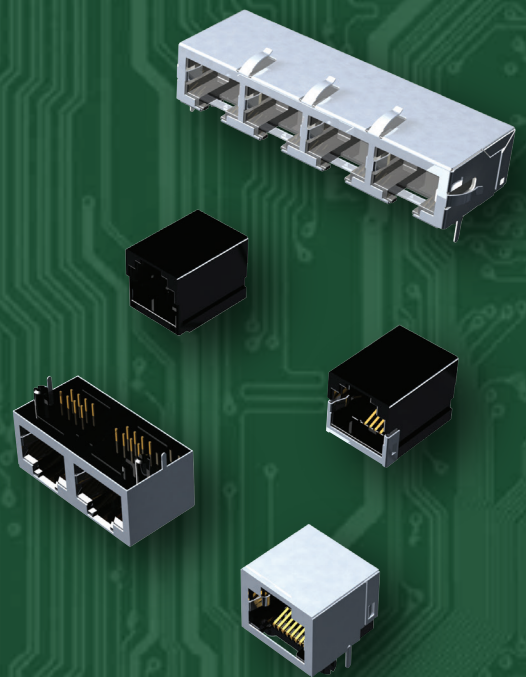


Modular Jack Connectors

The EDAC E-JAX family of Modular Jacks are manufactured to industry standards and are also fully customizable. Single, ganged, or stacked versions are available up to 2 x 8 ports. Shielded or unshielded, with a variety of LED options. SMT and through hole terminations are available in right angle or vertical orientations. Multiple plating options are also available.

Features

- RJ11/RJ45 single or stacked units available in multiple body styles, with or without LEDs, and various mounting options
- Right angle or vertical mount in through hole PCB or SMT
- Gold flash or gold plated contacts, including high thickness gold for telecom
- Shielded front ground, shielded rear ground, unshielded, or face shielded versions
- Up to 8 ports ganged single row or 16 ports stacked dual row
- Optional LEDs in mixed combinations of green, orange, red, or yellow including bi-color variations
- Low or high profile types, keyed or unkeyed, with or without mounting flange



EDAC

www.edac.net

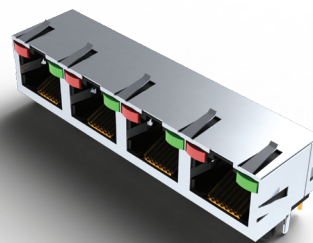
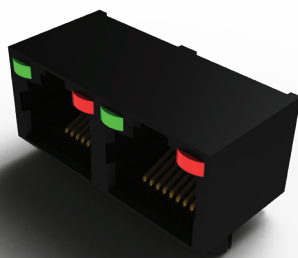


Modular Jack Connectors

Series	Type/ Contacts	No. of Ports	Orientation	No. of Rows	Shielded	Plating	LED's
J20/28/2K	RJ45/8	1	Vertical	1	N	Flash - 50" Gold	N
J21/24/2X	RJ11/4	1	Vertical	1	N	Flash - 50" Gold	N
J2L	RJ45/8	1	Vertical	1	Y	Flash - 50" Gold	N
J2T	RJ45/8	1	45 Degree	1	Y	Flash - 50" Gold	N
J2W	RJ45/32	4	Vertical	1	N	Flash - 50" Gold	Y
J53	RJ11/8	2	RT. Angle	1	N	Flash - 50" Gold	N
J60/93	RJ45/32	4	RT. Angle	1	Y	Flash - 50" Gold	N
J67	RJ45/32	4	RT. Angle	1	N	Flash - 50" Gold	Y
J6A	RJ45/32	2	RT. Angle	1	Y	Flash - 50" Gold	N
J6D/6E/J9P	RJ45/8	1	RT. Angle	1	Y	Flash - 50" Gold	Y
J79	RJ45/8	1	RT. Angle	1	N	Flash - 50" Gold	N
J96	RJ45/16	2	Stacked	2	Y	Flash - 50" Gold	Y
J9F	RJ45/32	4	Stacked	2	N	Flash - 50" Gold	N
J9Q/J6F/JS8	RJ45/8	1	RT. Angle	1	Y	Flash - 50" Gold	N
JF2	RJ45/16	2	Vertical	1	N	Flash - 50" Gold	N
JG2	RJ45/24	3	RT. Angle	1	N	Flash - 50" Gold	N
JPG	RJ45/8	1	Reverse Vert.	1	N	Flash - 50" Gold	N

E-Jax provides an extensive offering of RJ45 standard Modular Jacks

Widest array of options including plating, LED's, EMI fingers and tab orientation



EDAC

For More Information
www.edac.net

