

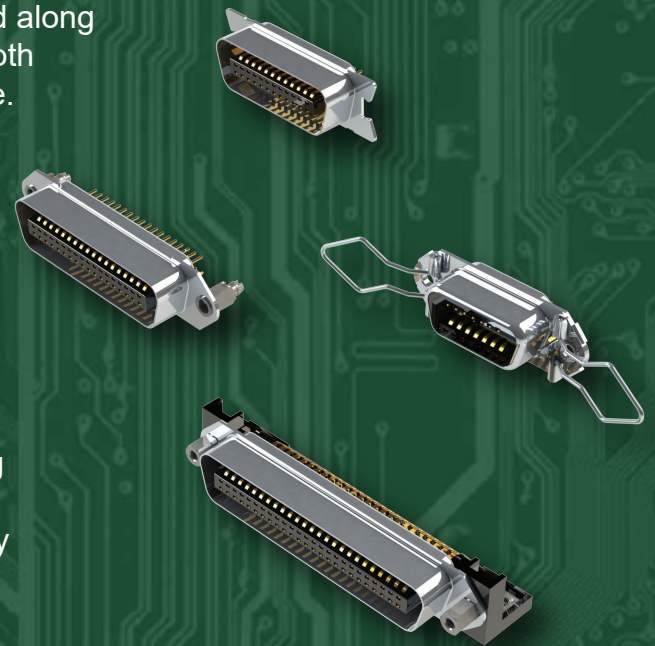


# Parallel Interface D-Sub Connectors

EDAC B57 connectors are parallel port interfaces fully compatible with all industry standards. Ribbon style contacts are utilized along with board locks for superior mating and retention forces. Both board receptacle and male plug cable versions are available.

## Features

- 14, 24, 36, 50 or 64 positions available
- Plating options from flash to 30u" gold
- Durable phosphor bronze contacts with 1 amp current rating
- Boardlocks for superior retention
- Male plug on cable side has IDC contacts for easy assembly



# EDAC

[www.edac.net](http://www.edac.net)





## Parallel Interface D-Sub Connectors

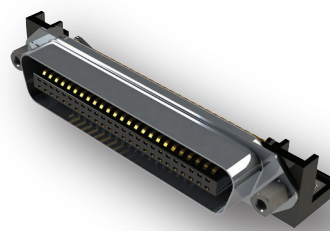
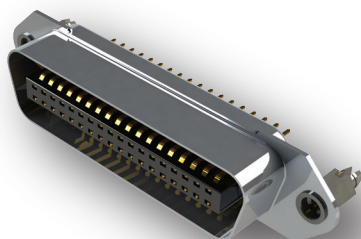
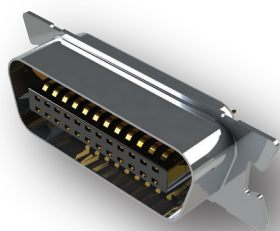
Series	No. of Contacts	Plating	No. of Contact Codes & Density	Board Mounting Options	Contact Styles
M/F					

B57	14 / 24 / 36 / 50 / 64	Flash-30u" gold	6 high	8	4-6
-----	------------------------	-----------------	--------	---	-----



High speed video signal interface

Hot pluggable with solid mating force!



# EDAC

For More Information  
[www.edac.net](http://www.edac.net)

