



Power Combo D-Sub Connectors

The EDAC Power-D product line is a D-Subminiature style connector combining standard signal contacts with power or coaxial contacts in the same connector. The body dimensions are similar to the standard D-sub sizes 9, 15, 25, 37 and 50 pin, and are offered in 22 different configurations. Power contacts up to 40 amps, or coaxial contacts with either 50 or 75 ohm impedance ratings are available.

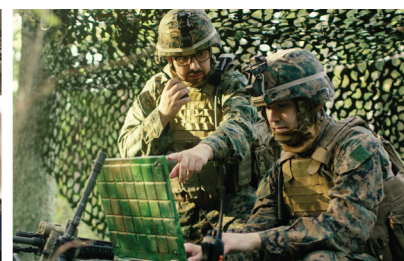
Features

- Plug and receptacles in vertical or right-angle orientations
- Data signal contacts at 5 amps & power contacts handling 10, 20, 30 or 40 amps
- Pin and socket contact mating design with P.C. tail and solder cup termination
- Metal shell provides EMI/RFI shielding while plug shell indents provide grounding and additional mating retention
- Mounting options for panel mount or connector mating include through hole, threaded hole and threaded standoffs
- D-shaped connector mating outline provides polarization



EDAC

www.edac.net

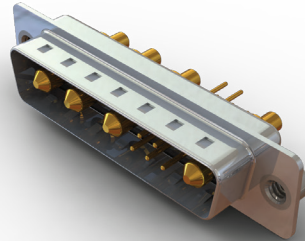
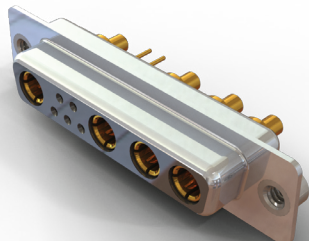
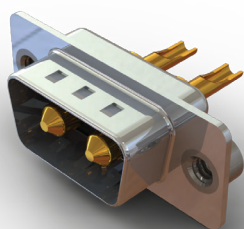


Power Combo D-Sub Connectors

Series	No. of Layout Options	Plating	Current Rating Power Contacts	Mounting Options	Impedance Rating Coaxial Contacts
627C	22	Flash-30u" gold	10 - 40 amps	11	50 or 75 ohms
628C	22	Flash-30u" gold	10 - 40 amps	11	50 or 75 ohms
629C	22	Flash-30u" gold	10 - 40 amps	11	50 or 75 ohms
630C	22	Flash-30u" gold	10 - 40 amps	11	50 or 75 ohms

Widest range of options available to meet all design requirements

Power and data signal contacts in a single package!



EDAC

For More Information
www.edac.net

