

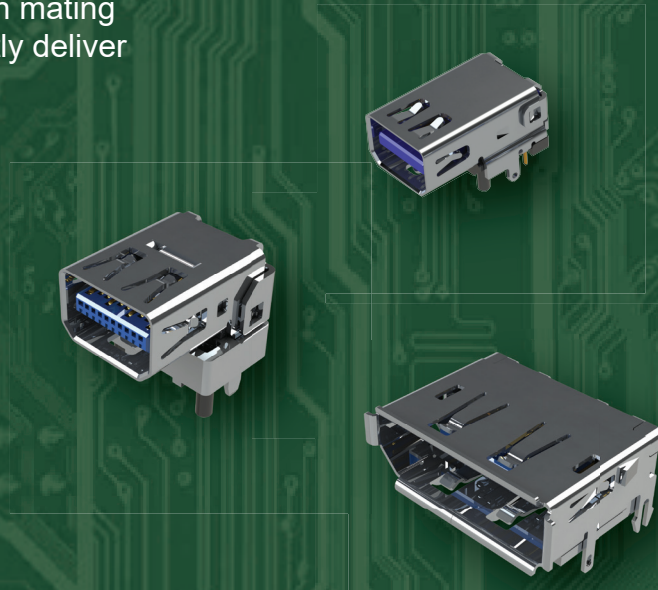


Display Port Connectors

EDAC DisplayPort connectors are utilized for high speed video interface applications. Hot pluggable and with high mating and retention forces. These durable connectors efficiently deliver video, audio, and data signals at high speeds.

Features

- Up to 32Gbps communication speed
- Supports up to 8K video resolution
- Industry standard plug and play technology
- Hot pluggable
- Backward compatible with HDMI and DVI



EDAC

www.edac.net





Display Port Connectors

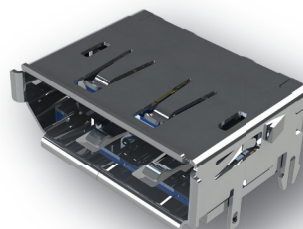
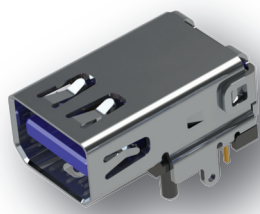
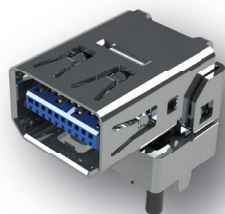
| Series | Contacts | Plating Options | Contact Code |
|--------|----------|-----------------|--------------|
| 690 | 20 | Flash-30u" gold | 1 |



High speed video
signal interface

Hot pluggable with
solid mating force!

For availability
please contact
customer service



EDAC

For More Information
www.edac.net

