

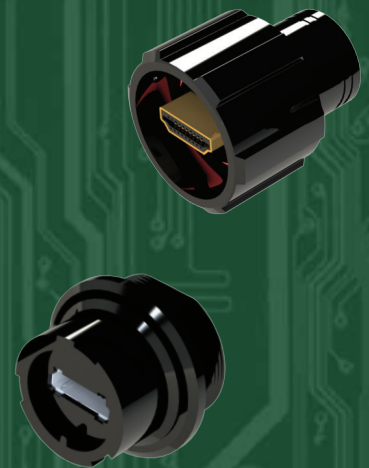


Waterproof HDMI Connectors

E-seal waterproof HDMI connectors follow industry standards and are available with a quarter turn, twist and lock, bayonet locking system offering easy mating and an ultra secure connection. Fully sealed on the back end with an O-ring seal to the panel insures no water ingress. These IP67 rated connectors are fully submersible and deliver high speed video transmissions resulting in very high resolution images.

Features

- Plating options from gold flash to 30u" gold plating
- Quarter turn, twist and lock, bayonet style locking mechanism
- Silicone rubber seals and fully potted terminals
- Hot pluggable
- Synchronous or asynchronous high speed data transmissions



EDAC

www.edac.net    



Waterproof HDMI Connectors

Series	No. of Contacts	Plating Options	Contact Codes	Ins. Material	Type
690W	19	Flash-30u"	Rt Angel/Vertical	PA9T/LCP/PA6T/PA66	A
690W	19	Flash-30u"	Rt Angel/Vertical	PA9T/LCP/PA6T/PA66	C Mini
690W	19	Flash-30u"	Rt Angel/Vertical	PA9T/LCP/PA6T/PA66	D Micro
690W	19	Flash-30u"	Rt Angel/Vertical	PA9T/LCP/PA6T/PA66	E
690W	19	Flash-30u"	Rt Angel/Vertical	PA9T/LCP/PA6T/PA66	B
690W	38	Flash-30u"	Rt Angel/Vertical	PA9T/LCP/PA6T/PA66	A Dual Stack

Premium IP67 connector with secure locking mechanism

IP67 waterproof connection with superior shock & vibration resistance!

Receptacle Waterproof

Series	No. of Contacts	Plating Options	Contact Codes	Ins. Material	Type
691W	19	Flash-30u"	Rt Angel/Vertical	PA9T/LCP/PA6T/PA66	A
691W	19	Flash-30u"	Rt Angel/Vertical	PA9T/LCP/PA6T/PA66	C Mini
691W	19	Flash-30u"	Rt Angel/Vertical	PA9T/LCP/PA6T/PA66	D Micro
691W	19	Flash-30u"	Rt Angel/Vertical	PA9T/LCP/PA6T/PA66	E
691W	19	Flash-30u"	Rt Angel/Vertical	PA9T/LCP/PA6T/PA66	B
691W	38	Flash-30u"	Rt Angel/Vertical	PA9T/LCP/PA6T/PA66	A Dual Stack

Waterproof Plugs

