

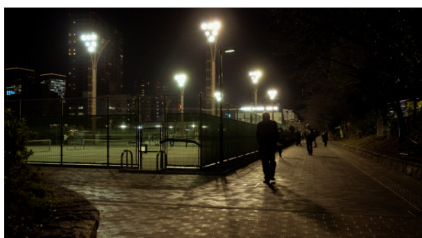
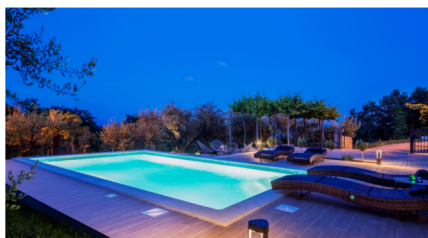
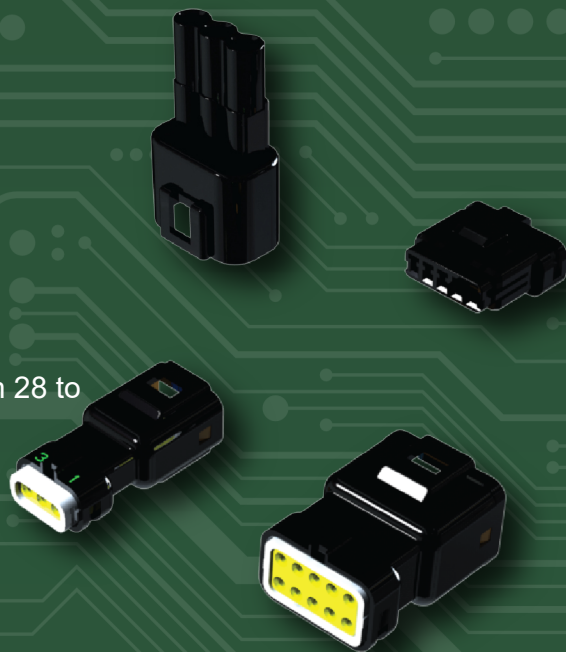


Waterproof Wire-to-Wire & Wire-to-Board

The EDAC waterproof plug and socket connectors provides a reliable interconnect solution in harsh environments. Single or double latch insulator designs ensure superior shock and vibration resistance. A variety of styles are available for different wire gauge applications. These utilize simple crimp and poke contacts. Optional contact plugs are available for use when all contact positions are not required. Additional contacts and wires can then be added in the field.

Features

- Current rating available from 3 to 10 amps for use with wire sizes from 28 to 14 AWG
- 560 and 572 series offer our double latch solution
- Available in wire-to-wire and wire-to-board options
- True crimp and poke solution
- Internal polarization to prevent mismatching
- Available with wire already installed
- Waterproof grade IP52 and IP67 certified

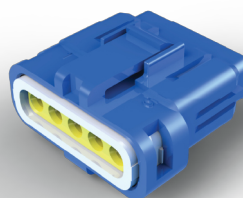
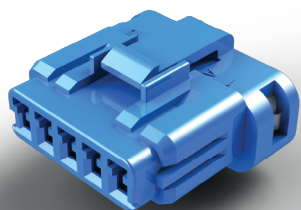


Waterproof Wire-to-Wire & Wire-to-Board

Series	Contact Pitch	No. of Contacts	Current Rating	Retention	Ingress Protection	Polarization	Contact Termination
560	.09" (2.50mm)	2, 3, 5	3 amps	Yes, Double Latch	IP67	Yes	PC Tail, Crimp
565	.09" (2.50mm)	2, 3, 5	3 amps	Yes, Single Latch	IP67	Yes	PC Tail, Crimp
566	.08" (2.00mm)	2, 3, 4, 6	2 amps	Yes, Single Latch	IP67	Yes	PC Tail, Crimp
567	.20" X .23" (5.00mm X 5.90mm)	1, 2, 3, 4, 6, 9	10 amps	Yes, Double Latch	IP52	Yes	Crimp
568	N/A	1	10 amps	Yes, Double Latch	IP52	Yes	Crimp
570	.23" (5.80mm)	1, 2, 3	10 amps	Yes, Single Latch	IP67	Yes	PC Tail, Crimp
572	.23" (5.80mm)	1, 2, 3	10 amps	Yes, Double Latch	IP67	Yes	PC Tail, Crimp

Economical wire to board interconnect solution with shrouded headers

Easily customized to meet any design parameters



EDAC

For More Information

edac.net

