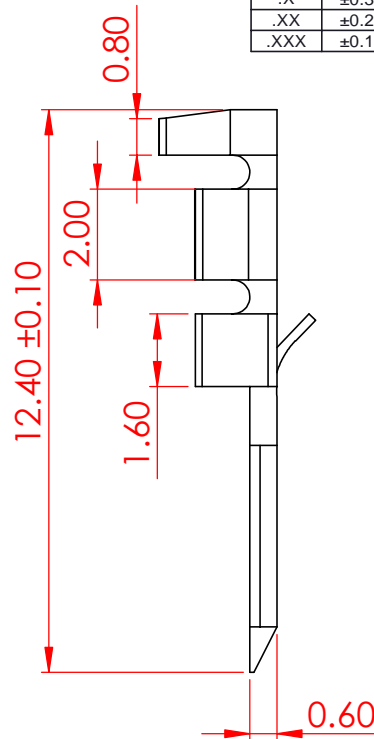
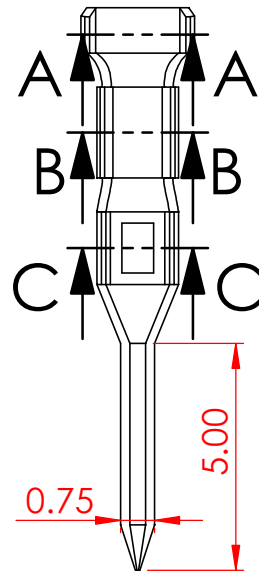


TOLERANCE UNLESS OTHERWISE SPECIFIED	
.X	±0.3
.XX	±0.2
.XXX	±0.1

THIS IS A C.A.D. GENERATED DRAWING  
DO NOT MAKE MANUAL REVISIONS TO MASTER.



ISSUE NUMBER	
ORIGINAL	①

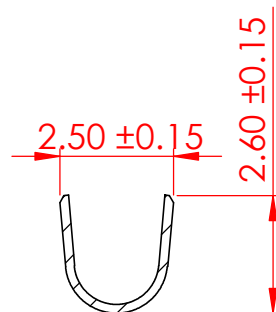


**SPECIFICATIONS**  
**VOLTAGE RATING:** 250V AC/DC  
**CURRENT RATING:** 3A AC/DC  
**WITHSTANDING VOLTAGE:** 1000VAC/MIN  
**TEMPERATURE RANGE:** -40 °C TO 105 °C  
**INSULATION RESISTANCE:** 1000MΩ MIN  
**CONTACT RESISTANCE:** 20mΩ MAX  
**INSULATION OD:** 2.8MM (MAX)

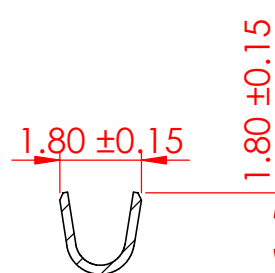
**MATERIAL**  
**PLATING:** PHOSPOR BRONZE  
**WIRE RANGE:** TIN-PLATED  
24-30 AWG

**USE WITH HOUSING:** 14K-5XX-210-AA1  
**MATES WITH CONTACT:** 14K-292-452

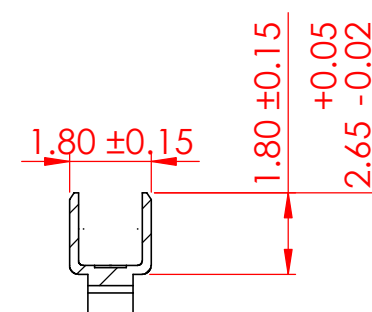
**PACKAGING:** REEL (10K/REEL)



SECTION A-A  
SCALE 6 : 1



SECTION B-B  
SCALE 6 : 1



SECTION C-C  
SCALE 6 : 1



THIS SERIES FULLY CONFORMS TO  
THE EUROPEAN UNION DIRECTIVES  
2011/65/EU FOR RoHS COMPLIANCY.



EDAC INC  
TORONTO, ONTARIO  
CANADA  
YOUR CONNECTION TO QUALITY & SERVICE

THESE DRAWINGS AND SPECIFICATIONS  
ARE THE PROPERTY OF EDAC INC., AND  
SHALL NOT BE REPRODUCED, OR COPIED  
OR USED AS THE BASIS FOR THE  
MANUFACTURE OR SALE OF APPARATUS  
WITHOUT WRITTEN PERMISSION.

# 14K SERIES PIN CONTACT, 2.50 PITCH

ACAD REFERENCE NO.: 14K-292-421		UNIT: MM
DRAWN: V.K	DATE: 02/20/24	
CHECKED: R.S.M.	DATE: 02/21/24	
SCALE: 6:1	SHEET 1 OF 1	
DRAWING NUMBER: 14K-292-421	ISSUE 1	
PART NUMBER: 14K-292-421		