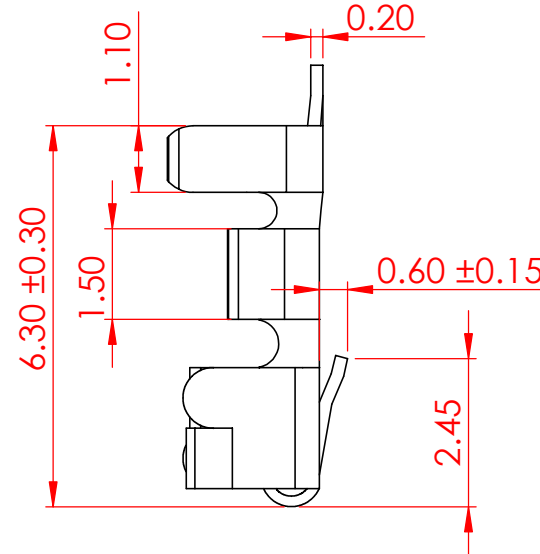
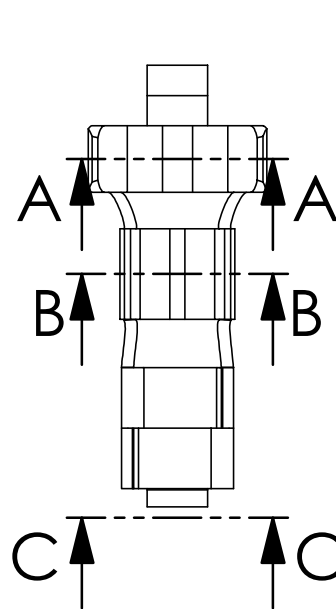


TOLERANCE UNLESS OTHERWISE SPECIFIED	
.X	±0.3
.XX	±0.2
.XXX	±0.1

THIS IS A C.A.D. GENERATED DRAWING
DO NOT MAKE MANUAL REVISIONS TO MASTER.



ISSUE NUMBER	
ORIGINAL	1

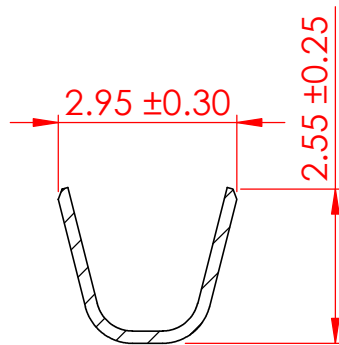


SPECIFICATIONS
VOLTAGE RATING: 250V AC/DC
CURRENT RATING: 3A AC/DC
WITHSTANDING VOLTAGE: 1000VAC/MIN
TEMPERATURE RANGE: -40 °C TO 105 °C
INSULATION RESISTANCE: 1000MΩ MIN
CONTACT RESISTANCE: 30mΩ MAX
INSULATION OD: 2.8MM (MAX)

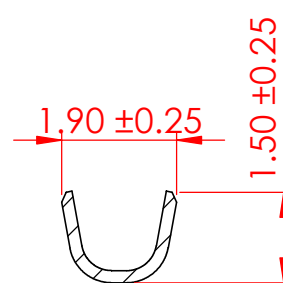
MATERIAL
PLATING: PHOSPOR BRONZE
WIRE RANGE: TIN-PLATED
 22-28 AWG

USE WITH HOUSING: 14K-5XX-210-AA2
MATES WITH CONTACT: 14K-292-421

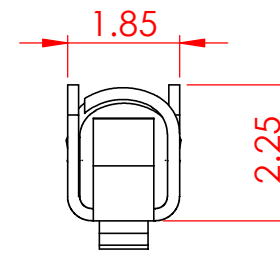
PACKAGING: REEL (8.5K/REEL)



SECTION A-A
SCALE 8 : 1



SECTION B-B
SCALE 8 : 1



SECTION C-C
SCALE 8 : 1



THIS SERIES FULLY CONFORMS TO
THE EUROPEAN UNION DIRECTIVES
2011/65/EU FOR RoHS COMPLIANCY.



EDAC INC
TORONTO, ONTARIO
CANADA
YOUR CONNECTION TO QUALITY & SERVICE

THESE DRAWINGS AND SPECIFICATIONS
ARE THE PROPERTY OF EDAC INC., AND
SHALL NOT BE REPRODUCED, OR COPIED
OR USED AS THE BASIS FOR THE
MANUFACTURE OR SALE OF APPARATUS
WITHOUT WRITTEN PERMISSION.

14K SERIES SOCKET CONTACT, 2.50 PITCH		ACAD REFERENCE NO.: 14K-292-452	UNIT: MM
		DRAWN: V.K	DATE: 02/20/24
		CHECKED: R.S.M.	DATE: 02/21/24
		SCALE: 8:1	SHEET 1 OF 1
		DRAWING NUMBER: 14K-292-452	ISSUE 1
		PART NUMBER: 14K-292-452	