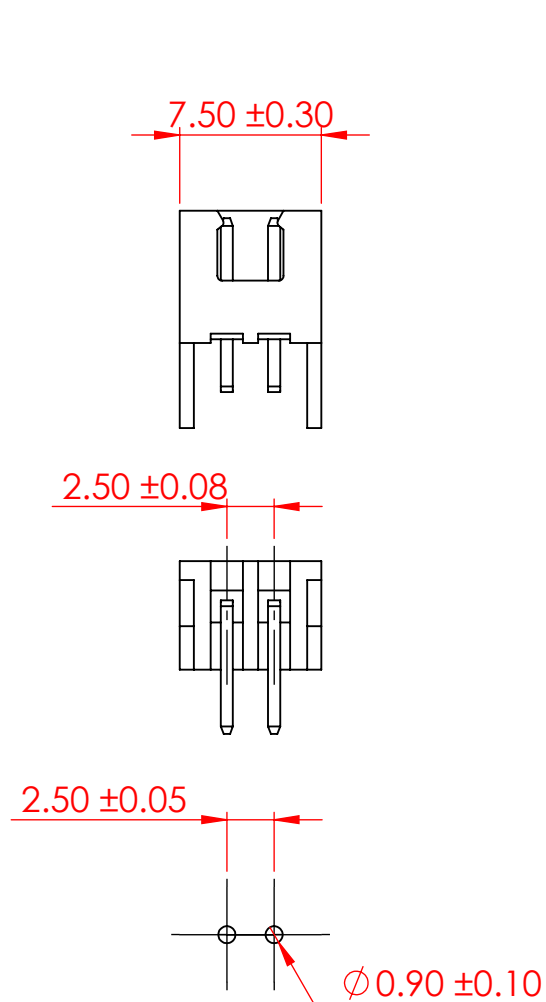


| TOLERANCE<br>UNLESS OTHERWISE<br>SPECIFIED |      |
|--|------|
| .X   | ±0.3 |
| .XX  | ±0.2 |
| .XXX                                       | ±0.1 |

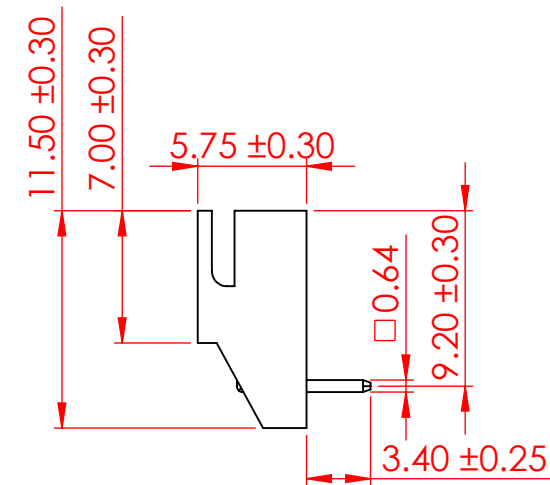
THIS IS A C.A.D. GENERATED DRAWING  
DO NOT MAKE MANUAL REVISIONS TO MASTER.



| ISSUE NUMBER |   |
|--------------|---|
| ORIGINAL     | ① |



RECOMMENDED PCB LAYOUT



SPECIFICATIONS:  
VOLTAGE RATING: 250V AC/DC  
CURRENT RATING: 3A AC/DC  
WITHSTANDING VOLTAGE: 800V AC/MIN  
TEMPERATURE RANGE: -40°C TO 105°C  
INSULATION RESISTANCE: ≥ 1000MΩ  
CONTACT RESISTANCE: ≤ 10mΩ

INSULATOR MATERIAL: NYLON 66, UL94V-0  
COLOR-NATURAL

CONTACT: BRASS, TIN PLATED

MATES WITH HOUSING: 14K-502-210-AA2



THIS SERIES FULLY CONFORMS TO  
THE EUROPEAN UNION DIRECTIVES  
2011/65/EU FOR RoHS COMPLIANCY.



EDAC INC  
TORONTO, ONTARIO  
CANADA  
YOUR CONNECTION TO QUALITY & SERVICE

THESE DRAWINGS AND SPECIFICATIONS  
ARE THE PROPERTY OF EDAC INC., AND  
SHALL NOT BE REPRODUCED, OR COPIED  
OR USED AS THE BASIS FOR THE  
MANUFACTURE OR SALE OF APPARATUS  
WITHOUT WRITTEN PERMISSION.

# 14K SERIES PIN HEADER, 2.50 PITCH, SIDE ENTRY WITH STABILIZER THROUGH HOLE STRAIGHT

|                                  |                |          |
|----------------------------------|----------------|----------|
| ACAD REFERENCE NO.: 14K Assembly |                | UNIT: MM |
| DRAWN: V.K.                      | DATE: 02/14/24 |          |
| CHECKED: R.S.M.                  | DATE: 02/21/24 |          |
| SCALE: 2.5:1                     | SHEET 1 OF 1   |          |
| DRAWING NUMBER: 14K-502-416-AD1  | ISSUE 1        |          |
| PART NUMBER: 14K-502-416-AD1     |                |          |