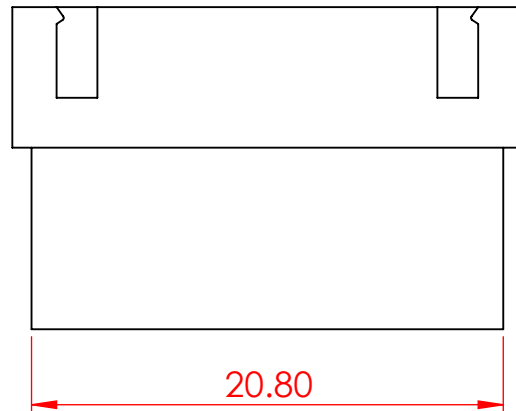
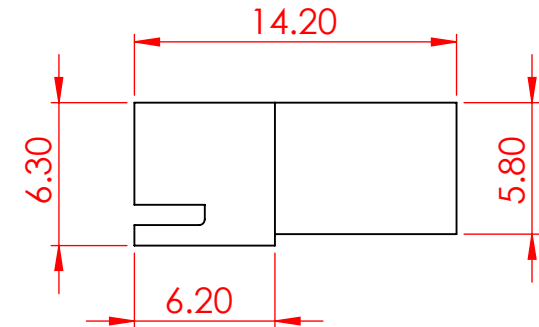
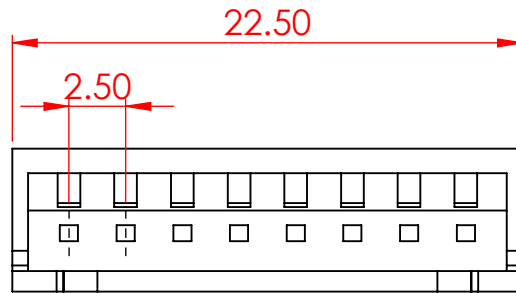


TOLERANCE UNLESS OTHERWISE SPECIFIED	
.X	±0.3
.XX	±0.2
.XXX	±0.1

THIS IS A C.A.D. GENERATED DRAWING
DO NOT MAKE MANUAL REVISIONS TO MASTER.



ISSUE NUMBER	
ORIGINAL	①



SPECIFICATIONS	
VOLTAGE RATING:	250V AC/DC
CURRENT RATING:	3A AC/DC
WITHSTANDING VOLTAGE:	1000V AC/MIN
TEMPERATURE RANGE:	-40° C TO 105° C
INSULATION RESISTANCE:	1000MΩ MIN.
MATERIAL:	NYLON66, UL94V-0
COLOR:	NATURAL
USE CONTACT:	14K-292-421 (TIN-PLATED)
MATES WITH HOUSING:	14K-508-210-AA2
MATES WITH PIN HEADER:	N/A
TOP ENTRY CONTACT CODES:	N/A
SIDE ENTRY CONTACT CODES:	N/A
MATES WITH SMT:	N/A
SMT CONTACT CODES:	N/A




THIS SERIES FULLY CONFORMS TO
THE EUROPEAN UNION DIRECTIVES
2011/65/EU FOR RoHS COMPLIANCY.



EDAC INC
TORONTO, ONTARIO
CANADA
YOUR CONNECTION TO QUALITY & SERVICE

THESE DRAWINGS AND SPECIFICATIONS
ARE THE PROPERTY OF EDAC INC., AND
SHALL NOT BE REPRODUCED, OR COPIED
OR USED AS THE BASIS FOR THE
MANUFACTURE OR SALE OF APPARATUS
WITHOUT WRITTEN PERMISSION.

14K SERIES 2.50 PITCH PIN HOUSING		ACAD REFERENCE NO.: 14K Assembly		UNIT: MM	
		DRAWN: V.K.		DATE: 02/07/24	
		CHECKED: R.S.M		DATE: 02/21/24	
<div><div>EDAC INC TORONTO, ONTARIO CANADA YOUR CONNECTION TO QUALITY & SERVICE</div></div>	THESE DRAWINGS AND SPECIFICATIONS ARE THE PROPERTY OF EDAC INC., AND SHALL NOT BE REPRODUCED, OR COPIED OR USED AS THE BASIS FOR THE MANUFACTURE OR SALE OF APPARATUS WITHOUT WRITTEN PERMISSION.	SCALE: 3:1		SHEET 1 OF 1	
		DRAWING NUMBER: 14K-508-210-AA1			ISSUE 1
		PART NUMBER: 14K-508-210-AA1			