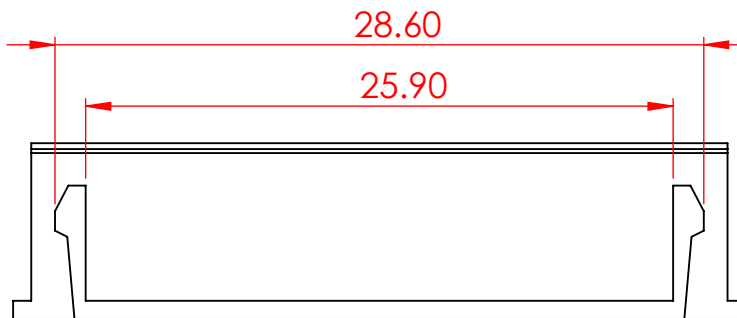
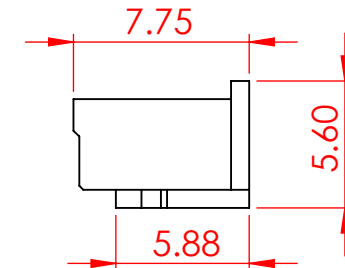
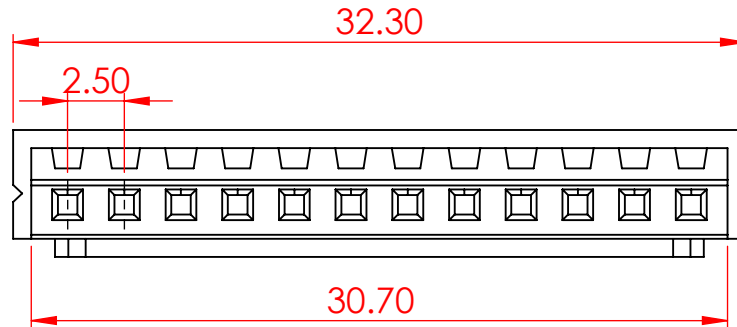


TOLERANCE UNLESS OTHERWISE SPECIFIED	
.X	±0.3
.XX	±0.2
.XXX	±0.1

THIS IS A C.A.D. GENERATED DRAWING
DO NOT MAKE MANUAL REVISIONS TO MASTER.



ISSUE NUMBER	
ORIGINAL	①



SPECIFICATIONS
VOLTAGE RATING:
CURRENT RATING:
WITHSTANDING VOLTAGE:
TEMPERATURE RANGE:
INSULATION RESISTANCE:

250V AC/DC
3A AC/DC
1000V AC/MIN
-40° C TO 105° C
1000MΩ MIN.

MATERIAL:
COLOR:

NYLON66, UL94V-0
NATURAL

USE CONTACT:

14K-292-452
(TIN-PLATED)

MATES WITH HOUSING:

14K-512-210-AA1

MATES WITH PIN HEADER:

14K-512-4XX-AA1

TOP ENTRY CONTACT CODES: 11,12,15

SIDE ENTRY CONTACT CODES: 16,21

MATES WITH SMT:

14K-512-4XXTAA1

SMT CONTACT CODES:

17,18



THIS SERIES FULLY CONFORMS TO
THE EUROPEAN UNION DIRECTIVES
2011/65/EU FOR RoHS COMPLIANCY.



EDAC INC
TORONTO, ONTARIO
CANADA
YOUR CONNECTION TO QUALITY & SERVICE

THESE DRAWINGS AND SPECIFICATIONS
ARE THE PROPERTY OF EDAC INC., AND
SHALL NOT BE REPRODUCED, OR COPIED
OR USED AS THE BASIS FOR THE
MANUFACTURE OR SALE OF APPARATUS
WITHOUT WRITTEN PERMISSION.

14K SERIES 2.50 PITCH SOCKET HOUSING		ACAD REFERENCE NO.: 14K Assembly	UNIT: MM
		DRAWN: V.K.	DATE: 02/07/24
		CHECKED: R.S.M	DATE: 02/21/24
		SCALE: 3:1	SHEET 1 OF 1
		DRAWING NUMBER: 14K-512-210-AA2	ISSUE
		PART NUMBER: 14K-512-210-AA2	1