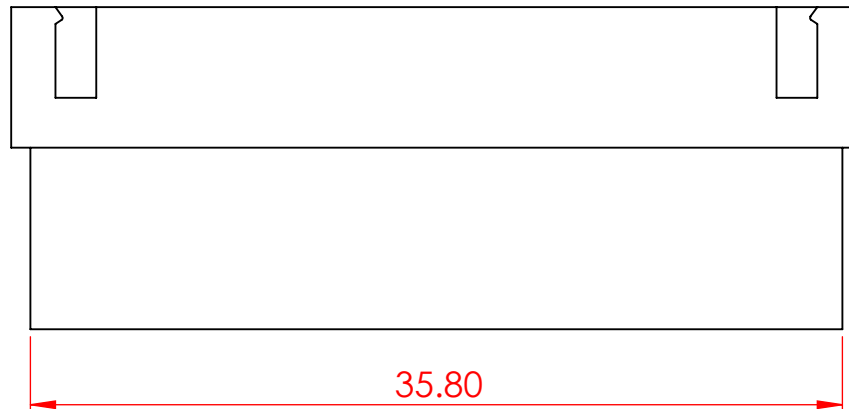
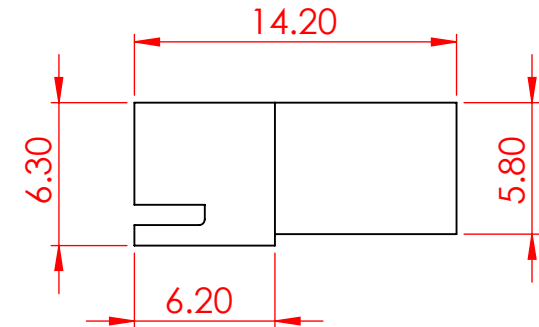
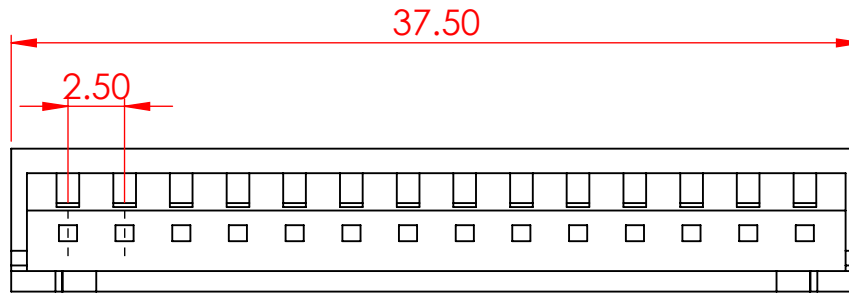


TOLERANCE UNLESS OTHERWISE SPECIFIED	
.X	±0.3
.XX	±0.2
.XXX	±0.1

THIS IS A C.A.D. GENERATED DRAWING  
DO NOT MAKE MANUAL REVISIONS TO MASTER.



ISSUE NUMBER	
ORIGINAL	①



**SPECIFICATIONS**  
**VOLTAGE RATING:**  
**CURRENT RATING:**  
**WITHSTANDING VOLTAGE:**  
**TEMPERATURE RANGE:**  
**INSULATION RESISTANCE:**

250V AC/DC  
3A AC/DC  
1000V AC/MIN  
-40° C TO 105° C  
1000MΩ MIN.

**MATERIAL:**  
**COLOR:**

NYLON66, UL94V-0  
NATURAL

**USE CONTACT:**

14K-292-421  
(TIN-PLATED)

**MATES WITH HOUSING:**

14K-514-210-AA2

**MATES WITH PIN HEADER:** N/A  
**TOP ENTRY CONTACT CODES:** N/A  
**SIDE ENTRY CONTACT CODES:** N/A

**MATES WITH SMT:** N/A  
**SMT CONTACT CODES:** N/A



THIS SERIES FULLY CONFORMS TO  
THE EUROPEAN UNION DIRECTIVES  
2011/65/EU FOR RoHS COMPLIANCY.



EDAC INC  
TORONTO, ONTARIO  
CANADA  
YOUR CONNECTION TO QUALITY & SERVICE

THESE DRAWINGS AND SPECIFICATIONS  
ARE THE PROPERTY OF EDAC INC., AND  
SHALL NOT BE REPRODUCED, OR COPIED  
OR USED AS THE BASIS FOR THE  
MANUFACTURE OR SALE OF APPARATUS  
WITHOUT WRITTEN PERMISSION.

14K SERIES 2.50 PITCH PIN HOUSING		ACAD REFERENCE NO.: 14K Assembly	UNIT: MM
		DRAWN: V.K.	DATE: 02/07/24
		CHECKED: R.S.M	DATE: 02/21/24
		SCALE: 3:1	SHEET 1 OF 1
		DRAWING NUMBER: 14K-514-210-AA1	ISSUE
		PART NUMBER: 14K-514-210-AA1	1