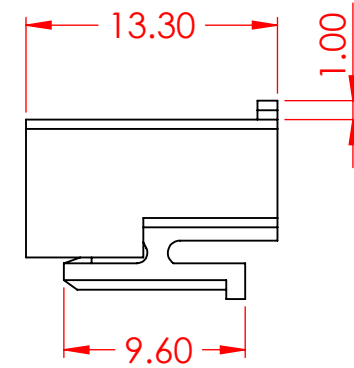
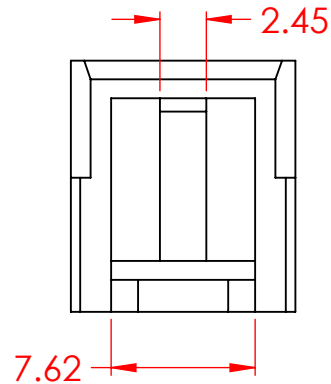
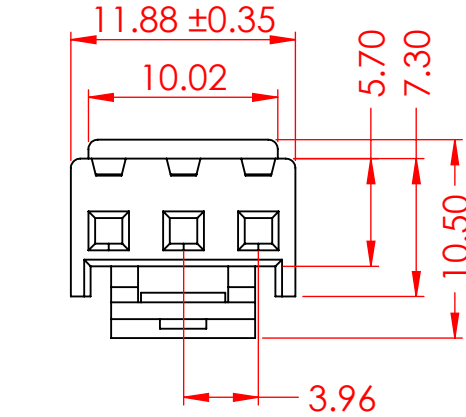


TOLERANCE UNLESS OTHERWISE SPECIFIED	
.X	±0.3
.XX	±0.2
.XXX	±0.1

THIS IS A C.A.D. GENERATED DRAWING
DO NOT MAKE MANUAL REVISIONS TO MASTER.



ISSUE NUMBER	
ORIGINAL	①
TEMP RANGE UPDATED V.K. APR. 10/2024	②



SPECIFICATIONS

VOLTAGE RATING: 250V AC/DC
 CURRENT RATING: 7A AC/DC
 WITHSTANDING VOLTAGE: 1500V AC/MIN
 TEMPERATURE RANGE: -25°C TO 105°C
 INSULATION RESISTANCE: ≥ 1000MΩ
 CONTACT RESISTANCE: ≤ 10mΩ

MATERIAL: NYLON 66, UL94V-0
 COLOR: NATURAL

USE CONTACT: 14L-292-482 (TIN PLATED)
 MATES WITH PIN HEADER
 TOP ENTRY - 14L-603-415-AA1
 SIDE ENTRY - 14L-603-416-AA1

USE CONTACT: 14L-292-282 (GOLD FLASH)
 MATES WITH PIN HEADER
 TOP ENTRY - 14L-603-215-AA1
 SIDE ENTRY - 14L-603-216-AA1

14L SERIES 3.96MM PITCH SINGLE ROW HOUSING

ACAD REFERENCE NO.:	14L Assembly	UNIT: MM
DRAWN:	V.K.	DATE: 11/16/23
CHECKED:	R.S.M	DATE: 11/21/23
SCALE:	2:1	SHEET 1 OF 1
DRAWING NUMBER:	14L-603-210-AA2	ISSUE
PART NUMBER:	14L-603-210-AA2	2



THIS SERIES FULLY CONFORMS TO
THE EUROPEAN UNION DIRECTIVES
2011/65/EU FOR RoHS COMPLIANCY.



EDAC INC
TORONTO, ONTARIO
CANADA
YOUR CONNECTION TO QUALITY & SERVICE

THESE DRAWINGS AND SPECIFICATIONS
ARE THE PROPERTY OF EDAC INC., AND
SHALL NOT BE REPRODUCED, OR COPIED
OR USED AS THE BASIS FOR THE
MANUFACTURE OR SALE OF APPARATUS
WITHOUT WRITTEN PERMISSION.