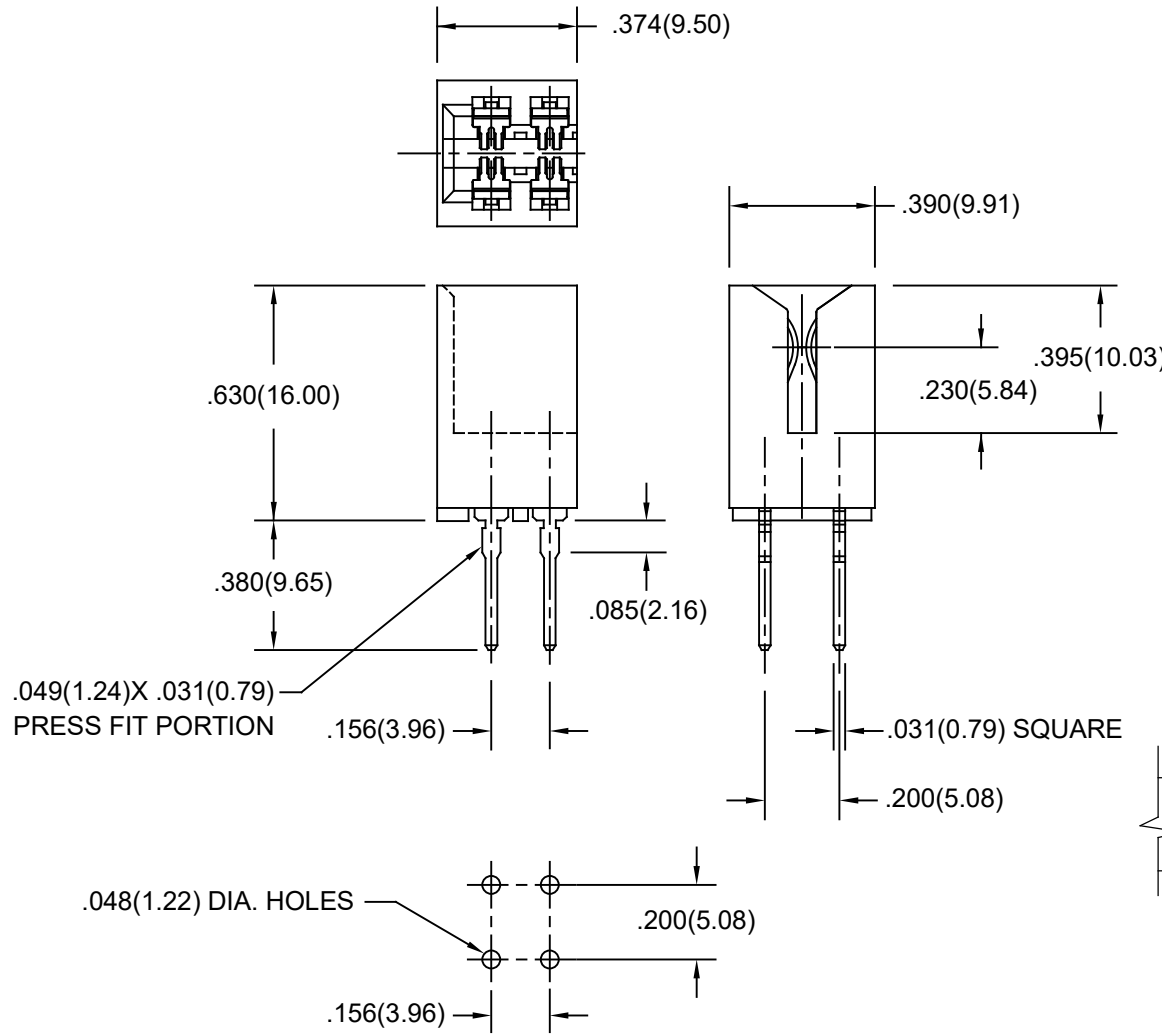


THIS IS A C.A.D. GENERATED DRAWING
DO NOT MAKE MANUAL REVISIONS TO MASTER.

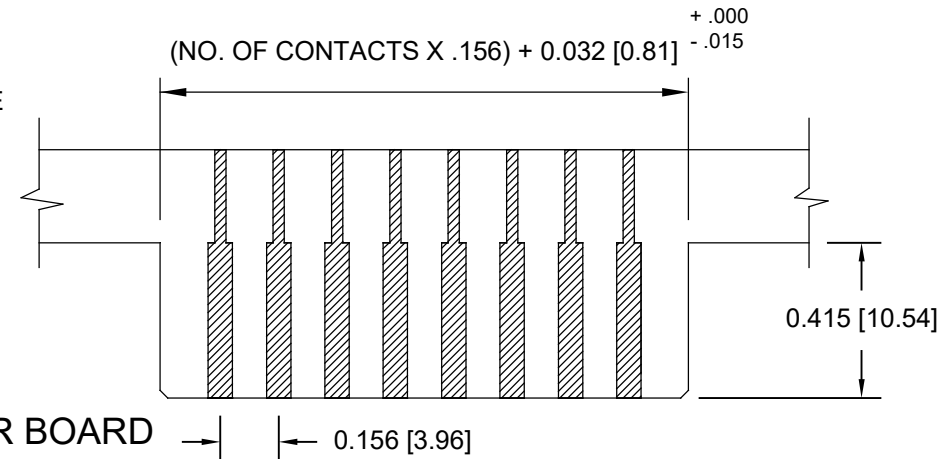


ISSUE NUMBER	
ORIGINAL	①
ADD DAUGHTER BOARD RECOMMENDATION	②
R.STA.MONICA	FEB.20/2014



SPECIFICATIONS:

- 1- CONTACT MATERIAL: PHOSPHOR BRONZE
- 2- INSULATOR MATERIAL: GREEN DIALLYL PHTHALATE, UL 94V-0
- 3- CONTACT PLATING: GOLD OVER NICKEL ALL OVER
- 4- CURRENT RATING: 5 AMPERES.
- 5- CONTACT RESISTANCE: 10 MILLIOHMS MAXIMUM.
- 5- INSULATION RESISTANCE: 5000 MEGOHMS MINIMUM.
- 6- DIELECTRIC WITHSTANDING VOLTAGE: 1800 VAC RMS AT SEE LEVEL.
- 7- INSERTION AND WITHDRAWAL FORCES: 16oz AND 1oz RESPECTIVELY PER CONTACT PAIR
- 8- OPERATING TEMPERATURE: -65°C TO +125°C



**368 SERIES CARD EDGE R/ANGLE CONNECTOR
.156(3.96) CONTACT SPACING (END MODULE)**

REF. 368-004-520-201	
DRAWN: F.BRIONES	DATE: JUL. 21/10
PART NUMBER	
368-004-520-201	
DRAWING NUMBER	ISSUE
368-004-520-201	2

RoHS COMPLIANT THIS SERIES FULLY CONFORMS TO THE EUROPEAN UNION DIRECTIVES 2002/95/EC AND 2011/65/EU FOR RoHS COMPLIANCY.

EDAC EDAC INC
TORONTO, ONTARIO
CANADA
YOUR CONNECTION TO QUALITY & SERVICE

THESE DRAWINGS AND SPECIFICATIONS ARE THE PROPERTY OF EDAC INC., AND SHALL NOT BE REPRODUCED, OR COPIED OR USED AS THE BASIS FOR THE MANUFACTURE OR SALE OF APPARATUS WITHOUT WRITTEN PERMISSION.