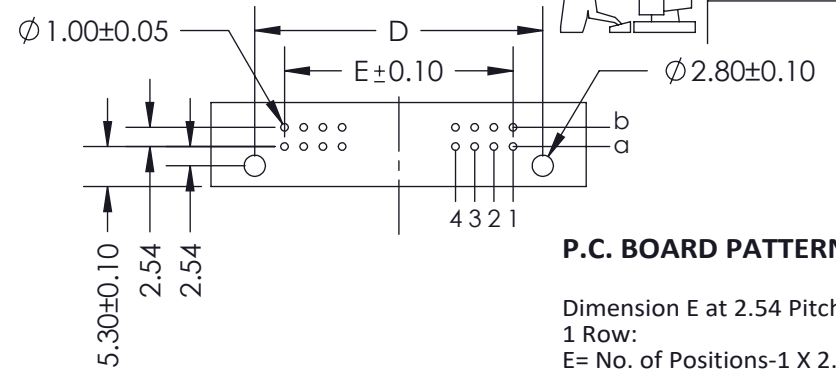
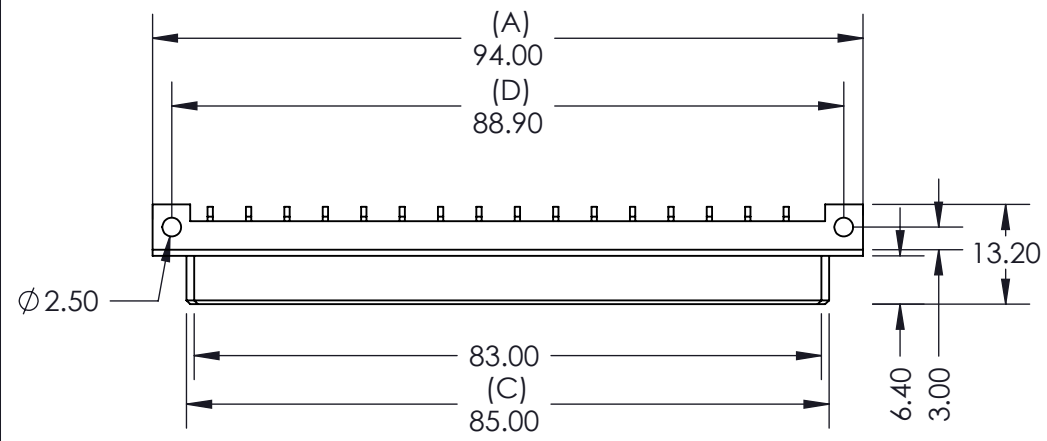


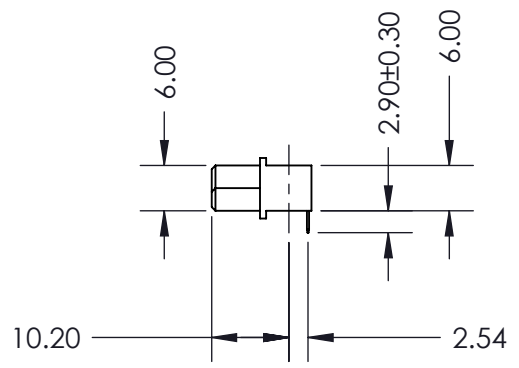
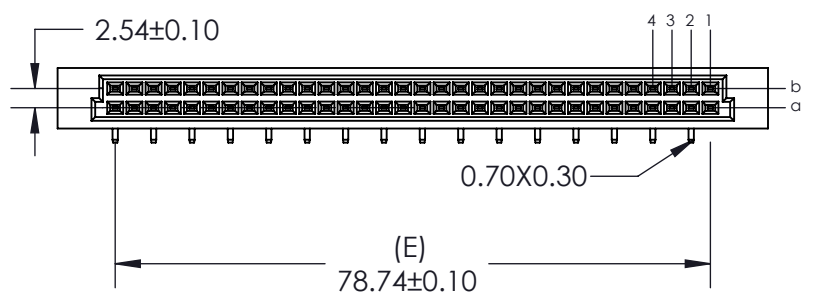
ISSUE NUMBER	①
ORIGINAL	

THIS IS A C.A.D. GENERATED DRAWING
DO NOT MAKE MANUAL REVISIONS TO MASTER.



P.C. BOARD PATTERN

Dimension E at 2.54 Pitch:
1 Row:
E= No. of Positions-1 X 2.54
2 Rows:
E= (No. of Positions/2)-1 X 2.54



Features:

- High density 64 Contacts 2 Rows Metal-to-Metal Connector on 2.54mm (.100") Grid
- Contact Material: Phosphor Bronze with selective gold plating: 2- Gold Flash Plating and tin on tails
3- 15u" of Gold Plating
- Contact Tails: 0.7 x 0.3mm (.027" x .012") Rectangular
6- 30u" of Gold Plating
- Contact Spacing: 2.54 x 2.54mm (.100" x .100") single or double rows;
or 2.54 x 5.08mm (.100" x .200") single or double rows
- Available in: 5, 8, 10, 16, 20, 32, and 64 positions
- Connectors designed to meet DIN 41612-Q specifications

Specifications:

- Current Rating: 2 Amperes @ 20°C
- Contact Material: Phosphor Bronze
- Contact Plating: Selective Gold Plating
- Contact Resistance: 30 milliohms, maximum
- Insulator Material: 30% Glass Filled PBT, UL 94V-0
- Insulation Resistance: Mated - 1000 Mega (10⁶) ohms
- Dielectric Withstanding Voltage: 1000 V.A.C RMS
- Basic Grid: 2.54mm (.100")
- Operating Temperature: -55°C to +105°C

462 Series Metal-To-Metal Receptacle DIN Connector
PART NUMBER: 462-016-360-122

ACAD REFERENCE NO.	462 -ENG-MASTER
DRAWN:R.STA.MONICA	DATE: AUG.19/10
CHECKED:	DATE:
SCALE: NTS	SHEET 1 OF 1
DRAWING NUMBER 462 -ENG-MASTER	ISSUE 1

EDAC INC
TORONTO, ONTARIO
CANADA
YOUR CONNECTION TO QUALITY & SERVICE

THESE DRAWINGS AND SPECIFICATIONS ARE THE PROPERTY OF EDAC INC. AND SHALL NOT BE REPRODUCED, OR COPIED OR USED AS THE BASIS FOR THE MANUFACTURE OR SALE OF APPARATUS WITHOUT WRITTEN PERMISSION.



THIS SERIES FULLY CONFORMS TO THE EUROPEAN UNION DIRECTIVES 2002/95/EC AND 2002/96/EC FOR RoHS COMPLIANCY