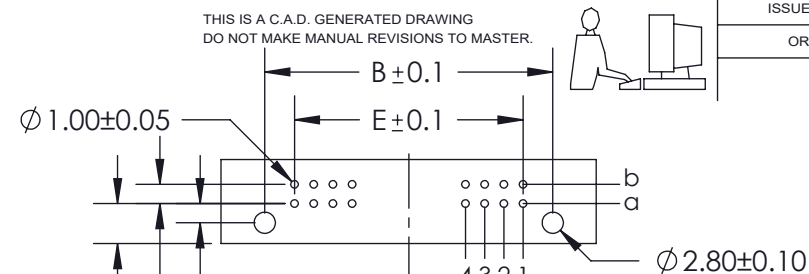


Features:

- High density 64 Contacts 2 Rows Metal-to-Metal Connector on 2.54mm (.100") Grid
- Contact Material and Finish: Brass with selective gold plating: 2- Gold Flash Plating and tin on tails 3- 15 μ " of Gold Plating
- Contact Tails: 0.6 x 0.5mm (.024" x .020") Rectangular 6- 30 μ " of Gold Plating
- Contact Spacing: 2.54 x 2.54mm (.100" x .100") single or double rows; or 2.54 x 5.08mm (.100" x .200") single or double rows
- Available in: 8, 10, 16, 20, 32, and 64 positions
- Connectors designed to meet DIN 41612-B specifications



P.C. BOARD PATTERN

Dimension E at Pitch: 2.54mm:
 1 Row:
 E= No. of Positions-1 X 2.54
 2 Rows:
 E= (No. of Positions/2)-1 X 2.54

Specifications:

- Current Rating: 2 Amperes @ 20°C
- Contact Material: Brass
- Contact Plating: Selective Gold Plating
- Contact Resistance: 30 milliohms, maximum
- Insulator Material: 30% Glass Filled PBT, UL 94V-0
- Insulation Resistance: Mated - 1000 Mega (10⁶) ohms min
- Dielectric Withstanding Voltage: 1000 V.A.C rms
- Basic Grid: 2.54mm (.100")
- Operating Temperature: -55°C to +105°C

463 Series Metal-To-Metal Plug DIN Connector PART NUMBER: 463-032-260-222



EDAC INC
 TORONTO, ONTARIO
 CANADA

YOUR CONNECTION TO QUALITY & SERVICE

THESE DRAWINGS AND SPECIFICATIONS ARE THE PROPERTY OF EDAC INC. AND SHALL NOT BE REPRODUCED, OR COPIED OR USED AS THE BASIS FOR THE MANUFACTURE OR SALE OF APPARATUS WITHOUT WRITTEN PERMISSION.

ACAD REFERENCE NO. 463 -ENG-MASTER

DRAWN: R.STA.MONICA DATE: AUG.25/10

CHECKED: DATE:

SCALE: NTS SHEET 1 OF 1

DRAWING NUMBER 463 -ENG-MASTER ISSUE 1



THIS SERIES FULLY CONFORMS TO THE
 EUROPEAN UNION DIRECTIVES 2002/95/EC
 AND 2002/96/EC FOR RoHS COMPLIANCY