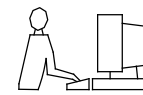


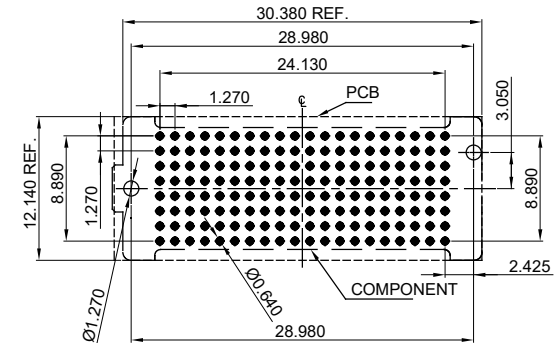
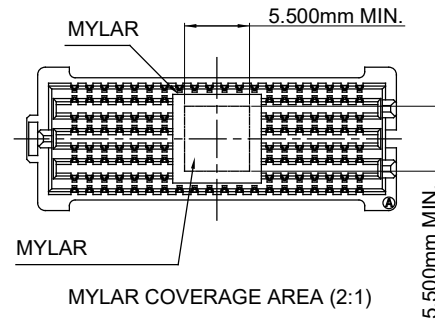
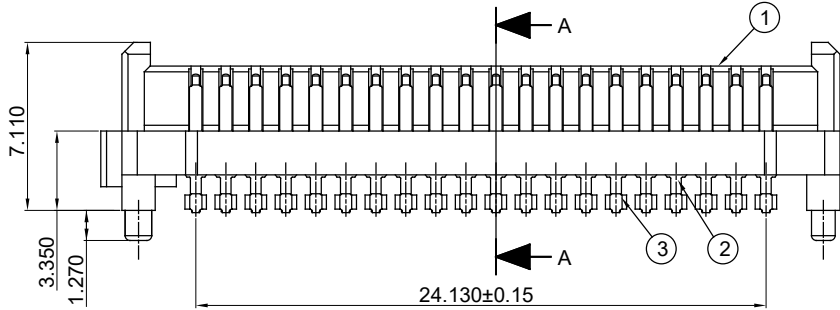
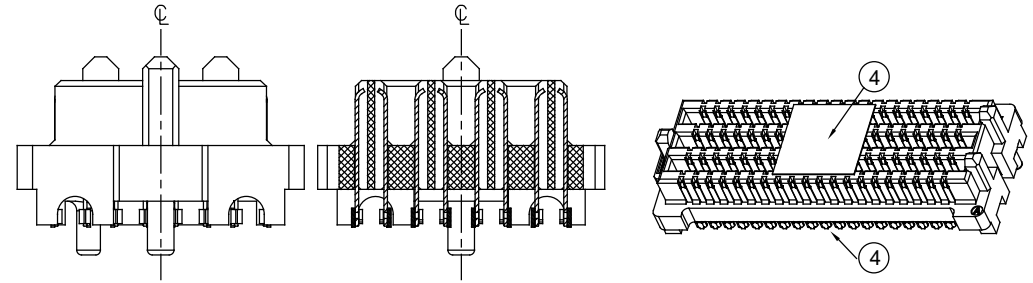
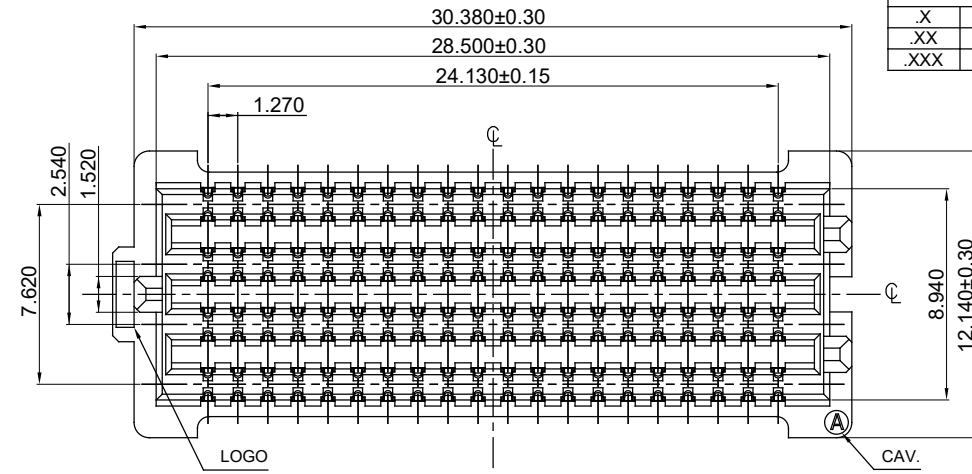
TOLERANCE UNLESS OTHERWISE SPECIFIED	
.X	±0.25
.XX	±0.15
.XXX	±0.10

THIS IS A C.A.D. GENERATED DRAWING
DO NOT MAKE MANUAL REVISIONS TO MASTER.

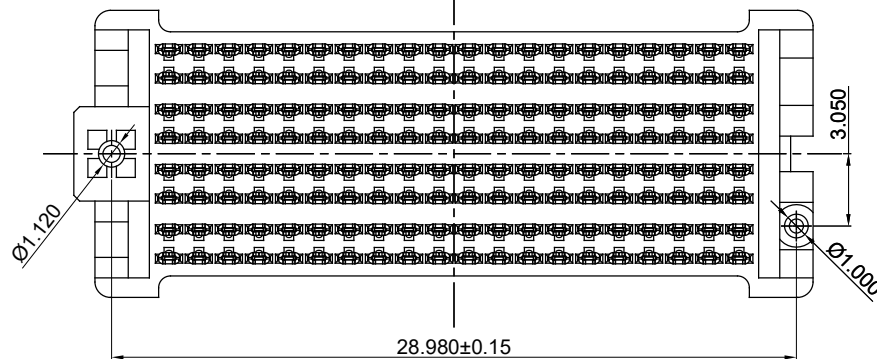


NOTES:

MATERIAL: L.C.P SERIES, UL-94V-0 COLOR: BLACK
HOUSING: COPPER ALLOY
CONTACT: 10µ" GOLD PLATING ON CONTACT AREA
MATTE TIN PLATING ON SOLDER TAIL OVER



RECOMMENDED PCB LAYOUT (TOP VIEW)
(ALL TOLERANCE ARE ±0.05)



NO.	DESCRIPTION	QTY.	MATERIAL	FINISH
4	MYLAR	1	PE MATEIRAL OR OTHER	NON-PLATING
3	SOLDER BLOCK	160	TIN ALLOY	NON-PLATING
2	CONTACT	160	COPPER ALLOY	GOLD PLATED ON CONTACT AREA & TIN(MATTE) 30~150 u" ON SOLDER TAIL OVER NICKEL 50~150 u" UNDER-PLATING.
1	INSULATOR	1	L.C.P SERIES, UL94 V-0	BLACK

BOARD TO BOARD, 160 CONACTS,
SMT, ALL LONG PIN, MALE

ACAD REFERENCE NO.: 470-150-529-001	
DRAWN: W.T	DATE: JUNE.28 /2018
CHECKED:	DATE:
SCALE: N.T.S	SHEET 1 OF 1
DRAWING NUMBER: 470-150-529-001	ISSUE
PART NUMBER: 470-150-529-001	1



THIS SERIES FULLY CONFORMS TO THE EUROPEAN UNION DIRECTIVES 2011/65/EU FOR RoHS COMPLIANCY.



EDAC INC
TORONTO, ONTARIO
CANADA
YOUR CONNECTION TO QUALITY & SERVICE

THESE DRAWINGS AND SPECIFICATIONS ARE THE PROPERTY OF EDAC INC.,AND SHALL NOT BE REPRODUCED,OR COPIED OR USED AS THE BASIS FOR THE MANUFACTURE OR SALE OF APPARATUS WITHOUT WRITTEN PERMISSION.