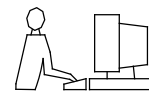


TOLERANCE UNLESS OTHERWISE SPECIFIED	
.X	±0.25
.XX	±0.15
.XXX	±0.10

THIS IS A C.A.D. GENERATED DRAWING
DO NOT MAKE MANUAL REVISIONS TO MASTER.



ISSUE NUMBER
ORIGINAL (1)

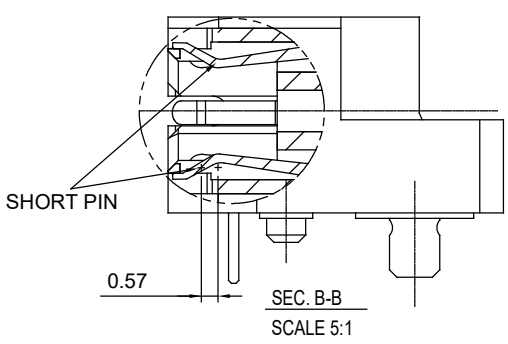
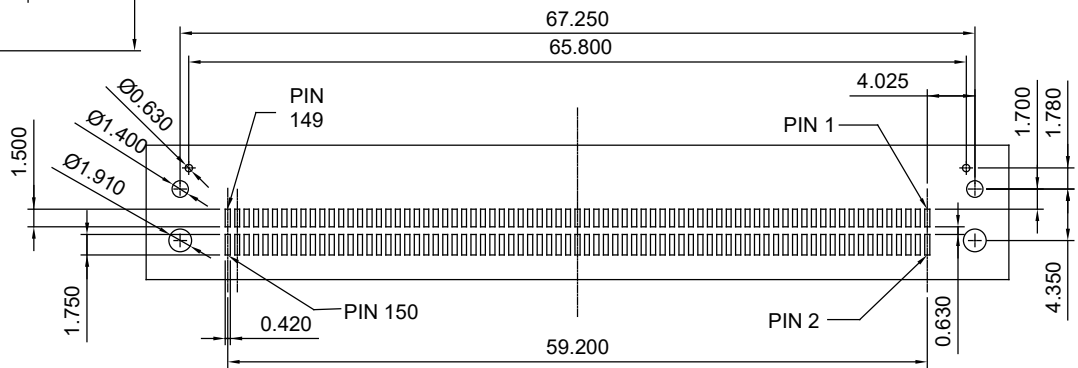
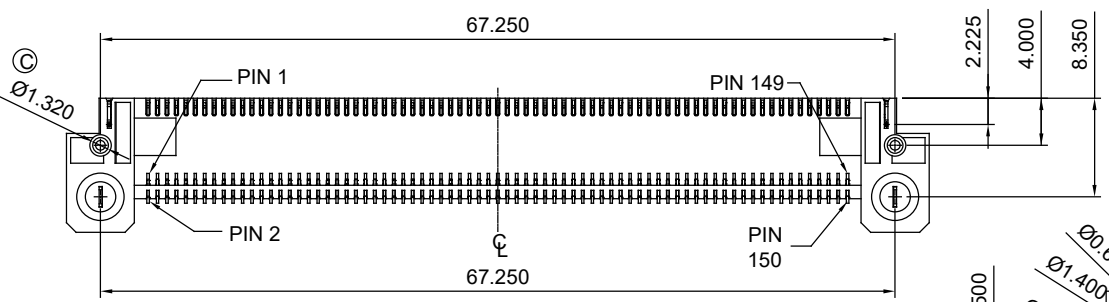
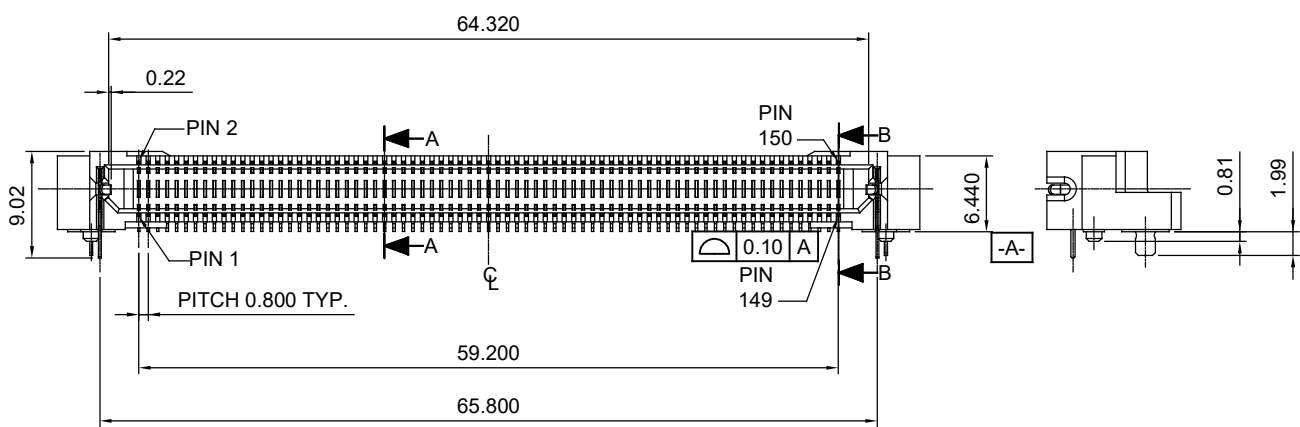
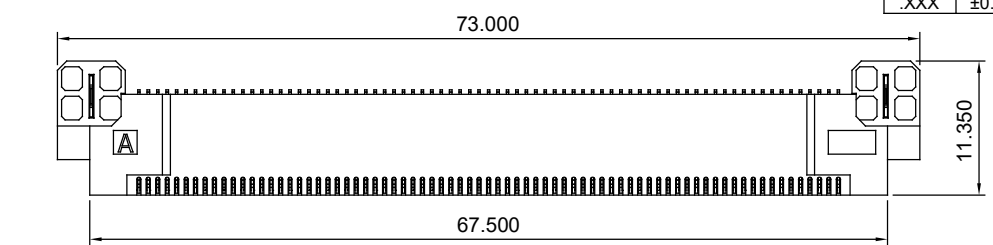
NOTES:

MATERIAL:
HOUSING: L.C.P SERIES, UL-94V-0
CONTACT: COPPER ALLOY
10µ" GOLD PLATING ON CONTACT AREA
MATTE TIN PLATING ON SOLDER TAIL OVER NICKEL UNDER PLATING

OPERATION TEMPERATURE: -55°C TO 85°C

ELECTRICAL:
CURRENT RATING: 0.5A
VOLTAGE RATING: 50V AC
INSULATION RESISTANCE: 500MΩ MIN.
CONTACT RESISTANCE: 50MΩ MAX.
DIELECTRIC WITHSTANDING VOLTAGE: 150V AC / 60 SEC.

MARKED : CRITICAL DIMENSION
MARKED DIMENSIONS NEED TO BE MEASURED IN CPK



**BOARD TO BOARD, 150 CONTACTS, RIGHT ANGLE,
4 SHORT PINS, FEMALE**

ACAD REFERENCE NO.: 473-150-571-102	
DRAWN: W.T	DATE: JUNE.28 /2018
CHECKED:	DATE:
SCALE: N.T.S	SHEET 1 OF 2
DRAWING NUMBER: 473-150-571-102	ISSUE
PART NUMBER: 473-150-571-102	1



THIS SERIES FULLY CONFORMS TO THE EUROPEAN UNION DIRECTIVES 2011/65/EU FOR RoHS COMPLIANCY.



EDAC INC
TORONTO, ONTARIO
CANADA
YOUR CONNECTION TO QUALITY & SERVICE



THESE DRAWINGS AND SPECIFICATIONS ARE THE PROPERTY OF EDAC INC., AND SHALL NOT BE REPRODUCED, OR COPIED OR USED AS THE BASIS FOR THE MANUFACTURE OR SALE OF APPARATUS WITHOUT WRITTEN PERMISSION.

NOTES:

MATERIAL: L.C.P SERIES, UL-94V-0
 HOUSING: COPPER ALLOY
 CONTACT: 10µ" GOLD PLATING ON CONTACT AREA
 MATTE TIN PLATING ON SOLDER TAIL OVER
 NICKEL UNDER PLATING

OPERATION TEMPERATURE: -55°C TO 85°C

ELECTRICAL:
 CURRENT RATING: 0.5A
 VOLTAGE RATING: 50V AC
 INSULATION RESISTANCE: 500MΩ MIN.
 CONTACT RESISTANCE: 50MΩ MAX.
 DIELECTRIC WITHSTANDING VOLTAGE: 150V AC / 60 SEC.

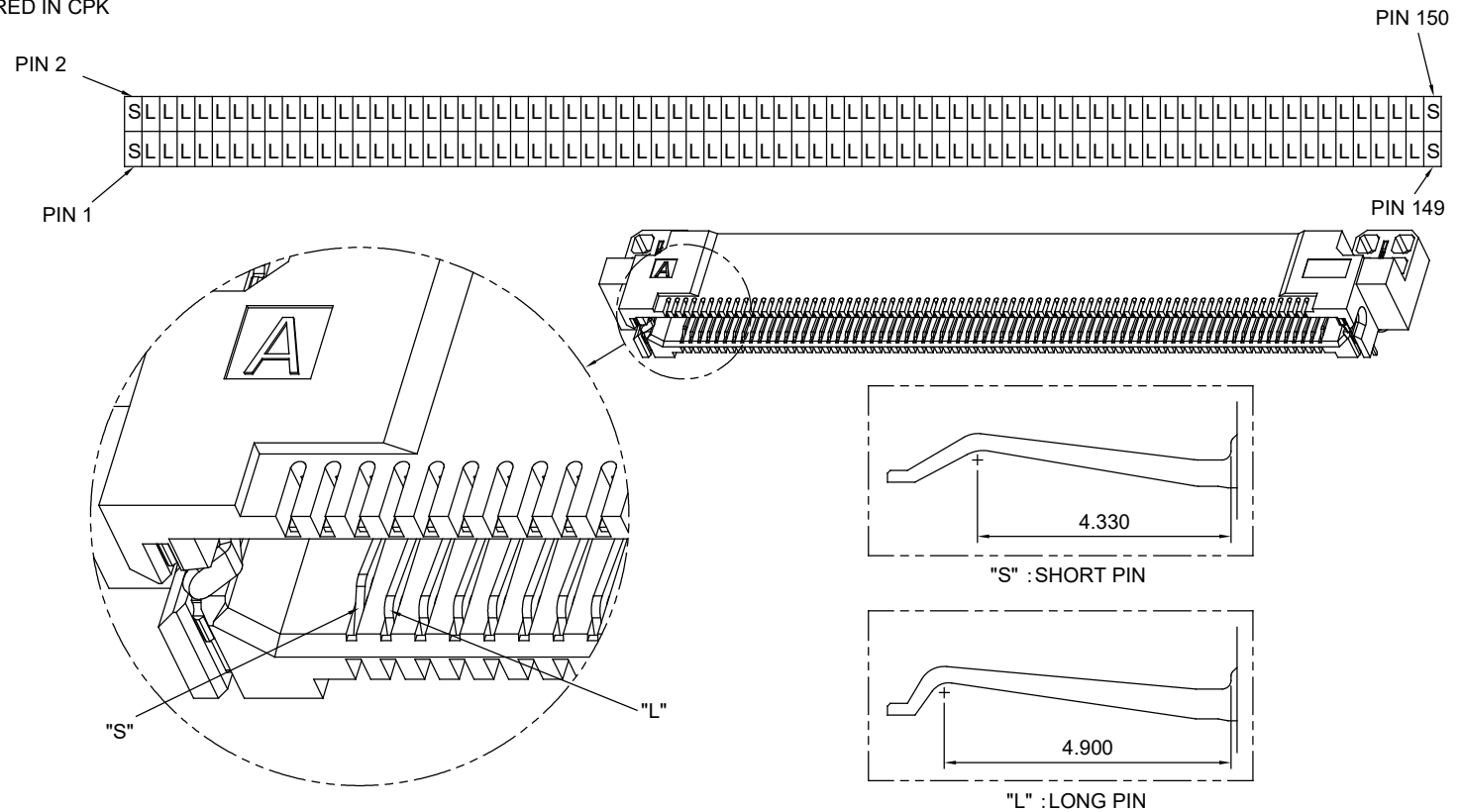
MARKED  : CRITICAL DIMENSION
 MARKED  DIMENSIONS NEED TO BE MEASURED IN CPK

TOLERANCE UNLESS OTHERWISE SPECIFIED	
.X	±0.15
.XX	±0.10
.XXX	±0.05

THIS IS A C.A.D. GENERATED DRAWING
 DO NOT MAKE MANUAL REVISIONS TO MASTER.



ISSUE NUMBER
 ORIGINAL 1



**BOARD TO BOARD, 150 CONTACTS, RIGHT ANGLE,
 4 SHORT PINS, FEMALE**

ACAD REFERENCE NO.: 473-150-571-102	
DRAWN: W.T	DATE: JUNE.28 /2018
CHECKED:	DATE:
SCALE: N.T.S	SHEET 2 OF 2
DRAWING NUMBER: 473-150-571-102	ISSUE 1
PART NUMBER: 473-150-571-102	



THIS SERIES FULLY CONFORMS TO
 THE EUROPEAN UNION DIRECTIVES
 2011/65/EU FOR RoHS COMPLIANCY.



EDAC INC
 TORONTO, ONTARIO
 CANADA
 YOUR CONNECTION TO QUALITY & SERVICE

THESE DRAWINGS AND SPECIFICATIONS
 ARE THE PROPERTY OF EDAC INC., AND
 SHALL NOT BE REPRODUCED, OR COPIED
 OR USED AS THE BASIS FOR THE
 MANUFACTURE OR SALE OF APPARATUS
 WITHOUT WRITTEN PERMISSION.