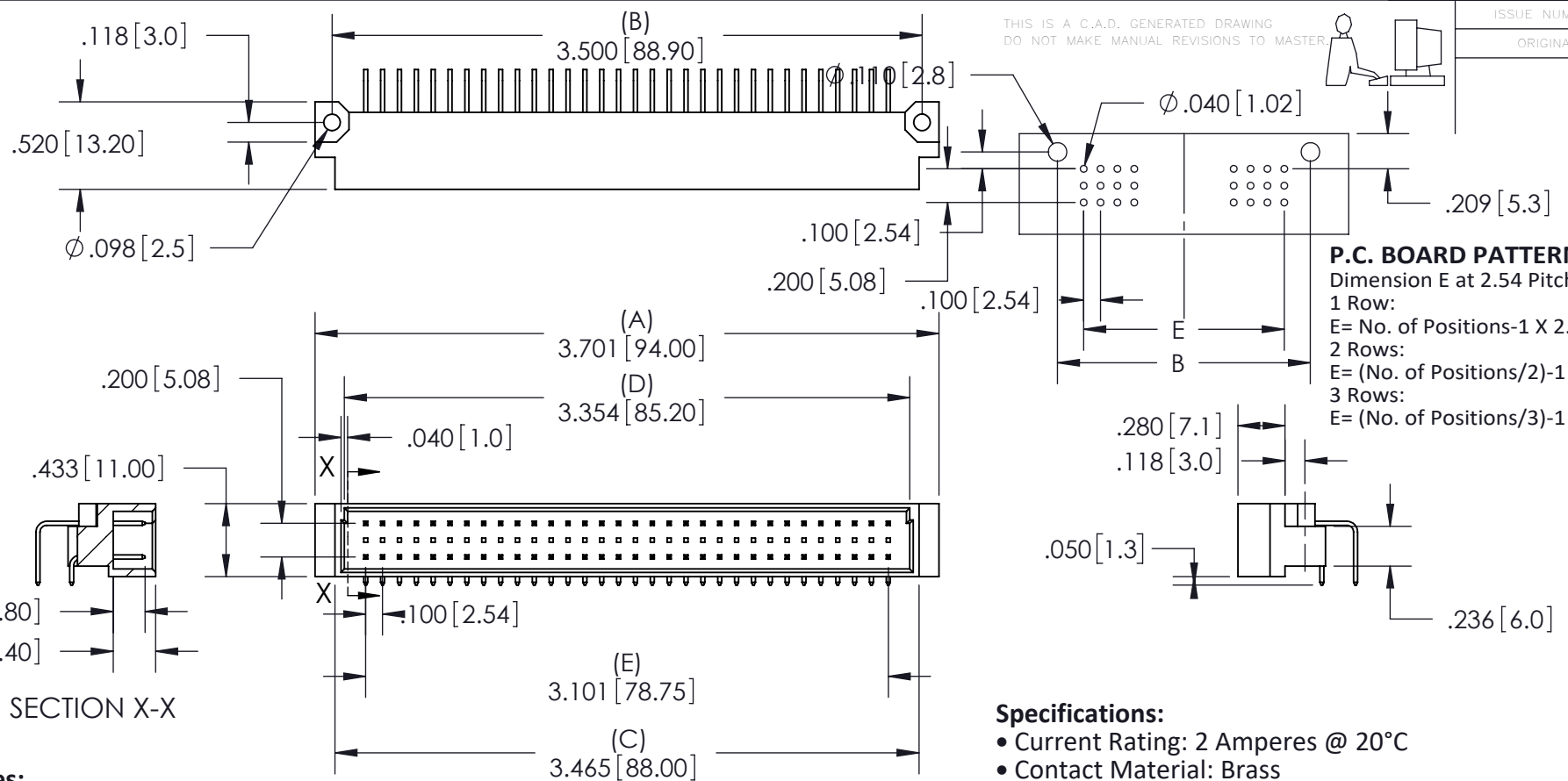


THIS IS A C.A.D. GENERATED DRAWING  
DO NOT MAKE MANUAL REVISIONS TO MASTER



**P.C. BOARD PATTERN**  
Dimension E at 2.54 Pitch:  
1 Row:  
E= No. of Positions-1 X 2.54  
2 Rows:  
E= (No. of Positions/2)-1 X 2.54  
3 Rows:  
E= (No. of Positions/3)-1 X 2.54

- Specifications:**
- Current Rating: 2 Amperes @ 20°C
  - Contact Material: Brass
  - Contact Plating: Selective Gold Plating
  - Contact Resistance: 30 milliohms, maximum
  - Insulator Material: 30% Glass Filled PBT, UL 94V-0
  - Insulation Resistance: Mated - 1000 Mega (10<sup>6</sup>) ohms
  - Dielectric Withstanding Voltage: 1000 V.A.C RMS
  - Basic Grid: 2.54mm (.100")
  - Operating Temperature: -55°C to +105°C

- Features:**
- High density 96 Contact 3 Row Metal-to-Metal Connector on 2.54mm (.100") Grid
  - Contacts: 90° Bend
  - Contact Material and Finish: CA725 with selective gold plating: 260- Gold Flash Plating and tin on tails  
360- 15u" of Gold Plating  
660- 30u" of Gold Plating
  - Contact Tails: 0.6 x 0.5mm (.024" x .020")
  - Contact Spacing: 2.54 x 2.54mm (.100" x .100") single, double or triple rows; or 2.54 x 5.08mm (.100" x .200") single, double, or triple rows.
  - Available in: 16, 32, 48, 64, and 96 positions
  - Available in High Temperature Material, only for 64 (a-c) and 96 positions (See Ordering Guide)
  - Connectors designed to meet DIN 41612-C specifications

495 Series Metal-To-Metal DIN Connector  
PART NUMBER: 495-064-360-612

**EDAC** INC  
TORONTO, ONTARIO  
CANADA  
YOUR CONNECTION TO QUALITY & SERVICE

THESE DRAWINGS AND SPECIFICATIONS ARE THE PROPERTY OF EDAC INC. AND SHALL NOT BE REPRODUCED, OR COPIED OR USED AS THE BASIS FOR THE MANUFACTURE OR SALE OF APPARATUS WITHOUT WRITTEN PERMISSION.

ACAD REFERENCE NO. 495-ENG-MASTER	
DRAWN: R. STA. MONICA	DATE: APR. 5/10
CHECKED:	DATE:
SCALE: NTS	SHEET 1 OF 1
DRAWING NUMBER 495-ENG-MASTER	ISSUE 1

