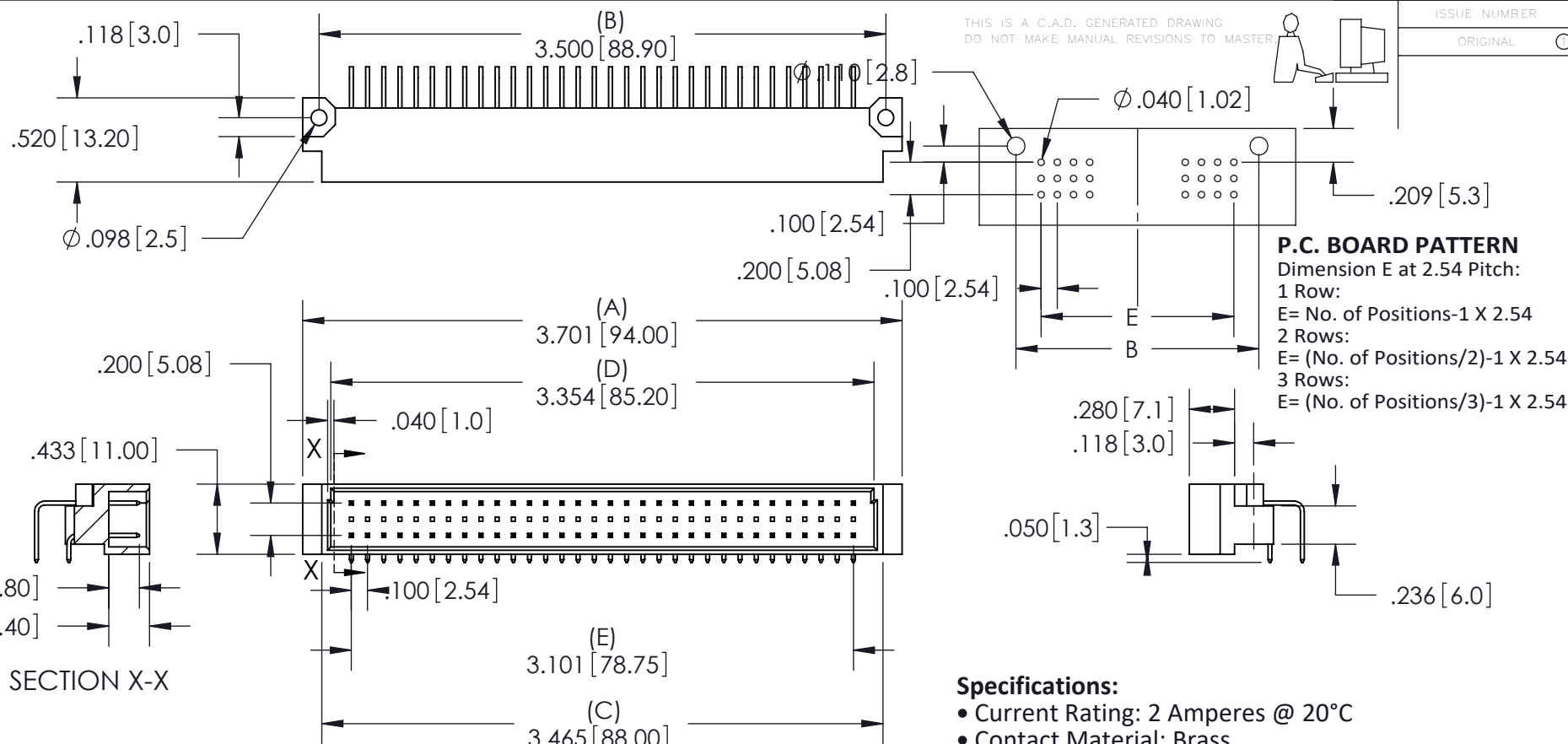


THIS IS A C.A.D. GENERATED DRAWING
DO NOT MAKE MANUAL REVISIONS TO MASTER



P.C. BOARD PATTERN
Dimension E at 2.54 Pitch:
1 Row:
E= No. of Positions-1 X 2.54
2 Rows:
E= (No. of Positions/2)-1 X 2.54
3 Rows:
E= (No. of Positions/3)-1 X 2.54

- Features:**
- High density 96 Contact 3 Row Metal-to-Metal Connector on 2.54mm (.100") Grid
 - Contacts: 90° Bend
 - Contact Material and Finish: CA725 with selective gold plating: 260- Gold Flash Plating and tin on tails
360- 15u" of Gold Plating
660- 30u" of Gold Plating
 - Contact Tails: 0.6 x 0.5mm (.024" x .020")
 - Contact Spacing: 2.54 x 2.54mm (.100" x .100") single, double or triple rows; or 2.54 x 5.08mm (.100" x .200") single, double, or triple rows.
 - Available in: 16, 32, 48, 64, and 96 positions
 - Available in High Temperature Material, only for 64 (a-c) and 96 positions (See Ordering Guide)
 - Connectors designed to meet DIN 41612-C specifications

- Specifications:**
- Current Rating: 2 Amperes @ 20°C
 - Contact Material: Brass
 - Contact Plating: Selective Gold Plating
 - Contact Resistance: 30 milliohms, maximum
 - Insulator Material: 30% Glass Filled PBT, UL 94V-0
 - Insulation Resistance: Mated - 1000 Mega (10⁶) ohms
 - Dielectric Withstanding Voltage: 1000 V.A.C RMS
 - Basic Grid: 2.54mm (.100")
 - Operating Temperature: -55°C to +105°C

495 Series Metal-To-Metal DIN Connector
PART NUMBER: 495-464-360-612

EDAC INC
TORONTO, ONTARIO
CANADA
YOUR CONNECTION TO QUALITY & SERVICE

THESE DRAWINGS AND SPECIFICATIONS ARE THE PROPERTY OF EDAC INC. AND SHALL NOT BE REPRODUCED, OR COPIED OR USED AS THE BASIS FOR THE MANUFACTURE OR SALE OF APPARATUS WITHOUT WRITTEN PERMISSION.

ACAD REFERENCE NO. 495-ENG-MASTER	
DRAWN: R. STA. MONICA	DATE: APR. 5/10
CHECKED:	DATE:
SCALE: NTS	SHEET 1 OF 1
DRAWING NUMBER 495-ENG-MASTER	ISSUE 1

