

THIS IS A C.A.D. GENERATED DRAWING  
DO NOT MAKE MANUAL REVISIONS TO MASTER.

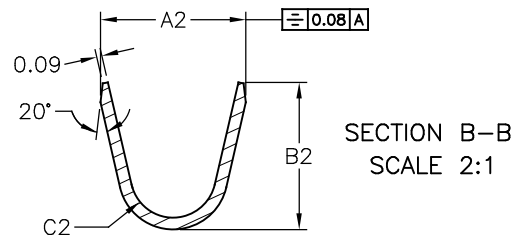
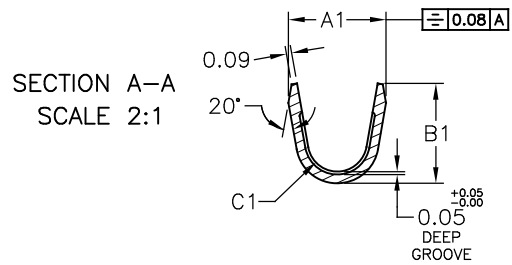
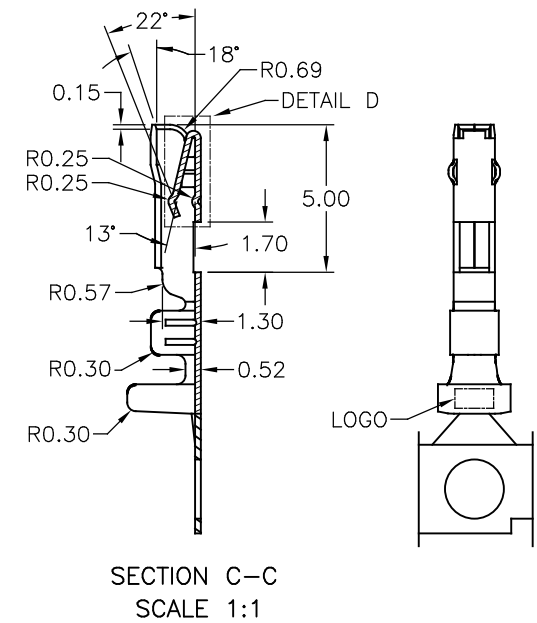
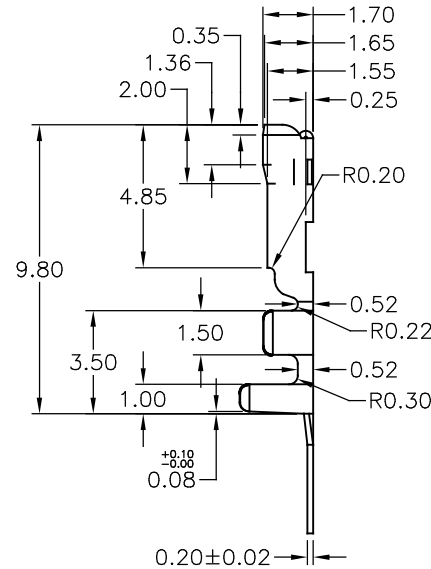
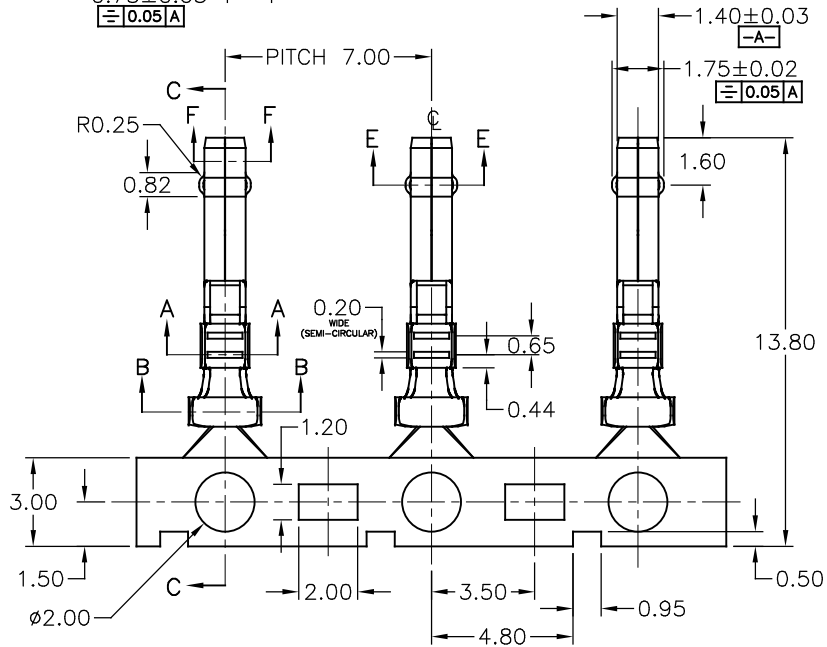


\* UNLESS OTHERWISE SPECIFIED TOLERANCES ON DECIMAL IS:

UNIT: MM

DIM	TOL	DIM	TOL
X.	±0.15	X'	±2.0'
X.X	±0.10	X.X'	±1.0'
X.XX	±0.05	X.XX'	±0.5'
X.XXX	±0.03	X.XXX'	±0.3'

ISSUE NUMBER  
ORIGINAL

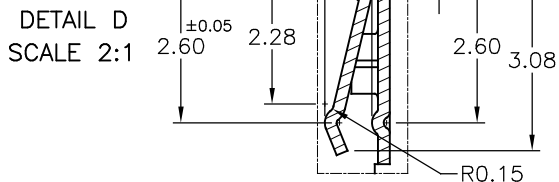


NOTES:

1. MATERIAL: PHOSPHOR BRONZE C5191-1/2 H, 0.2mm THICK, PRE-PLATING TIN 50-100u" ALL OVER NICKEL 5-15u".
2. PART SHALL BE FREE OF BURRS NOT EXCEEDING 0.02mm. NO CRACKS ALLOW ON ANY SURFACES.
3. TOOLING TO BE DESIGNED WITH ADJUSTMENT TO HOLD THIS DIMENSION.
4. THE MALE TERMINAL WAS STAMPED FROM PLATING STRIP.

SEE NOTE 3

565-290-741	1.90±0.10	1.9±0.10	R0.55±0.05	3.0±0.10	2.7±0.10	R0.90±0.05	AWG #20-22	Ø1.70 max	8,000 X 6 R
565-290-721	1.70±0.10	1.7±0.10	R0.50±0.05	2.6±0.10	2.4±0.10	R0.83±0.05	AWG #22-28	Ø1.60 max	10,000 X 6 R
PART NO.	A1	B1	C1	A2	B2	C2	WIRE RANGE	INSULATION DIA	PCS/REEL



565 SERIES FEMALE TERMINAL

ACAD REFERENCE NO. 565-	
DRAWN: Peter Deng	DATE: MAY.16/15
CHECKED:	DATE:
SCALE: (IN C.A.D. 1:1)	SHEET 1 OF 1
DRAWING NUMBER	ISSUE
565-290-721 & 741	4

**EDAC** EDAC INC  
TORONTO, ONTARIO  
CANADA  
YOUR CONNECTION TO QUALITY & SERVICE

THESE DRAWINGS AND SPECIFICATIONS ARE THE PROPERTY OF EDAC INC. AND SHALL NOT BE REPRODUCED, OR COPIED OR USED AS THE BASIS FOR THE MANUFACTURE OR SALE OF APPARATUS WITHOUT WRITTEN PERMISSION.