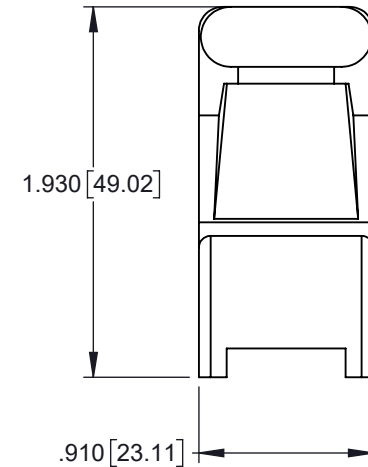
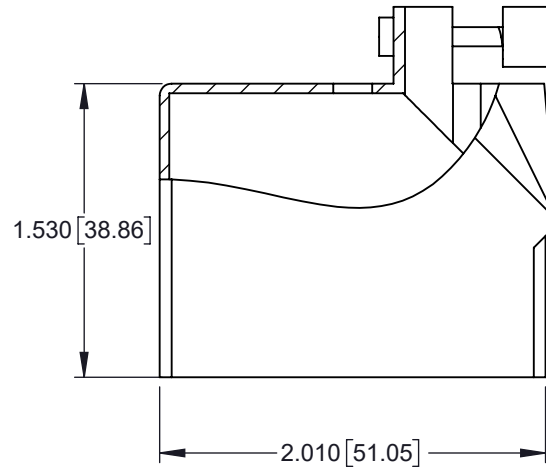
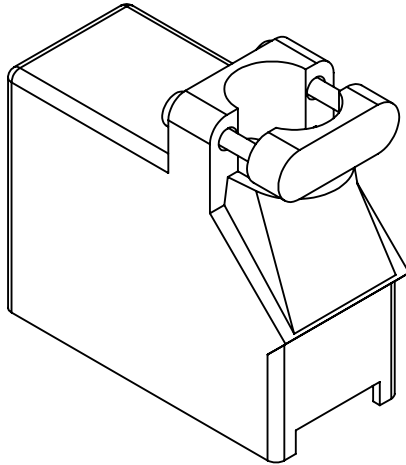


TOLERANCE UNLESS OTHERWISE SPECIFIED IN MM:
 GENERAL ±0.02 [0.5]

THIS IS A C.A.D. GENERATED DRAWING
 DO NOT MAKE MANUAL REVISIONS TO MASTER.



ISSUE NUMBER	
ORIGINAL	①
ADD TOL J.T	MAY10/17 ②



ORDERING CODE:

516-230-138

Series: _____

Cover Sub-Assembly: _____

Entry Style:
 1-Plastic Cover, Top Entry, Standard Clamp

Cover Size: SIZE 38 _____

MATERIAL:
 POLYCARBONATE, GREEN IN COLOR.



THIS SERIES FULLY CONFORMS TO THE
 EUROPEAN UNION DIRECTIVES 2011/65/EC
 RoHS COMPLIANCY.

**516 SERIES COVER ASSEMBLY
 PART NUMBER: 516-230-138**



YOUR CONNECTION TO QUALITY & SERVICE

EDAC INC
 TORONTO, ONTARIO
 CANADA

THESE DRAWINGS AND SPECIFICATIONS
 ARE THE PROPERTY OF EDAC INC. AND
 SHALL NOT BE REPRODUCED, OR COPIED
 OR USED AS THE BASIS FOR THE
 MANUFACTURE OR SALE OF APPARATUS
 WITHOUT WRITTEN PERMISSION.

ACAD REFERENCE NO. 516-230-138	
DRAWN: R.STA.MONICA	DATE: MAY.27/11
CHECKED:	DATE:
SCALE: NOT TO SCALE	SHEET 1 1
DRAWING NUMBER 516-230-138	ISSUE 2