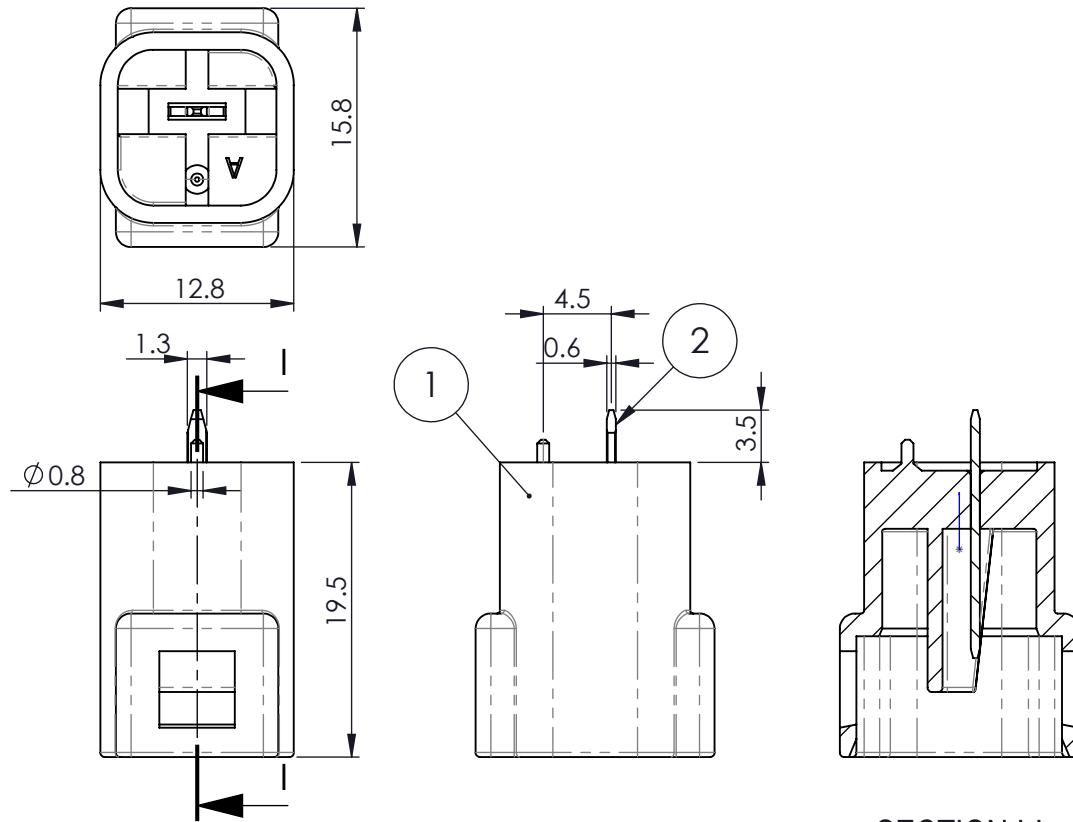


THIS IS A C.A.D. GENERATED DRAWING
DO NOT MAKE MANUAL REVISIONS TO MASTER.



ISSUE NUMBER

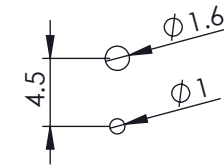
ORIGINAL ①



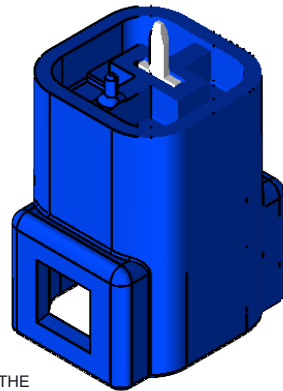
SECTION I-I

MATERIALS:
HOUSING: PBT, UL94V-0, BLUE COLOR
TERMINAL: BRASS, TIN PLATED

- SPECIFICATIONS**
1. PITCH: 5.8MM
 2. RATED VOLTAGE: 300V
 3. RATED CURRENT: 10A MAX
 4. WITHSTAND VOLTAGE: AC 1700V R.M.S.
 5. CONTACT RESISTANCE: 10 mOHMS MAX
 6. INSULATION RESISTANCE: 1000 MOHMS MIN/DC 500V
 7. TEMPERATURE RANGE: -40°C ~ +105°C
 8. WATERPROOF GRADE: TESTED AND CERTIFIED TO IP67



RECOMMENDED PCB HOLE



ITEM NO.	DESCRIPTION	QTY.
1	572-001-420-PCB HOUSING	1
2	570-420 PCB-TERMINAL-1	1

Waterproof Connector, PCB Mount, Male,
Blue, 1Pin
572-001-420-301

ACAD REFERENCE NO. 572-001-420-301

DRAWN:R.STA.MONICA DATE: NOV.16/15

CHECKED: DATE:

SCALE: NOT TO SCALE SHEET 1 OF 1

DRAWING NUMBER ISSUE

572-001-420-301

1



THIS SERIES FULLY CONFORMS TO THE
EUROPEAN UNION DIRECTIVES
2011/65/EU FOR RoHS COMPLIANCY



EDAC INC
TORONTO, ONTARIO
CANADA

YOUR CONNECTION TO QUALITY & SERVICE

THESE DRAWINGS AND SPECIFICATIONS
ARE THE PROPERTY OF EDAC INC. AND
SHALL NOT BE REPRODUCED, OR COPIED
OR USED AS THE BASIS FOR THE
MANUFACTURE OR SALE OF APPARATUS
WITHOUT WRITTEN PERMISSION.