

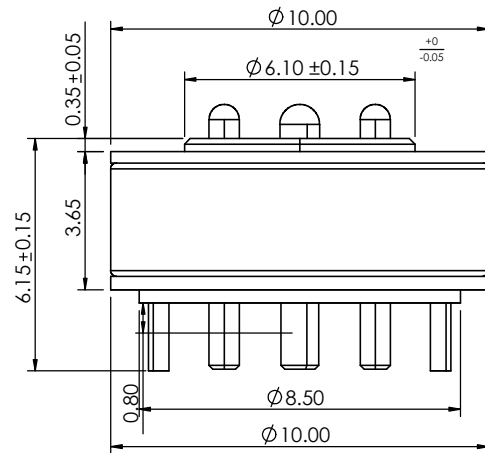
TOLERANCE UNLESS OTHERWISE SPECIFIED	
.X	±0.15
.XX	±0.10

THIS IS A C.A.D. GENERATED DRAWING
DO NOT MAKE MANUAL REVISIONS TO MASTER.



ISSUE NUMBER

ORIGINAL	①
Ø6.10±0.15 WAS Ø6.10 +0/-0.05, 6.15±0.15 WAS 6.15±0.05, Ø7.2±0.20 WAS Ø7.2, Ø1.00 GUILD PIN DELETED IN FRONT VIEW AND BOTTOM	②



SPECIFICATION:

MATERIAL:

CONTACT: BRASS, GOLD FLASH PLATING ALL OVER NICKEL UNDERPLATING

HOUSING: PA46, BLACK

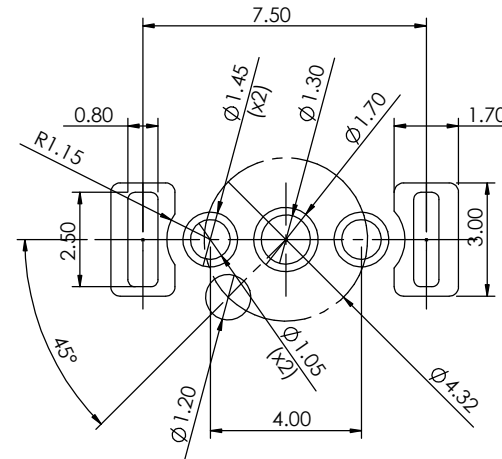
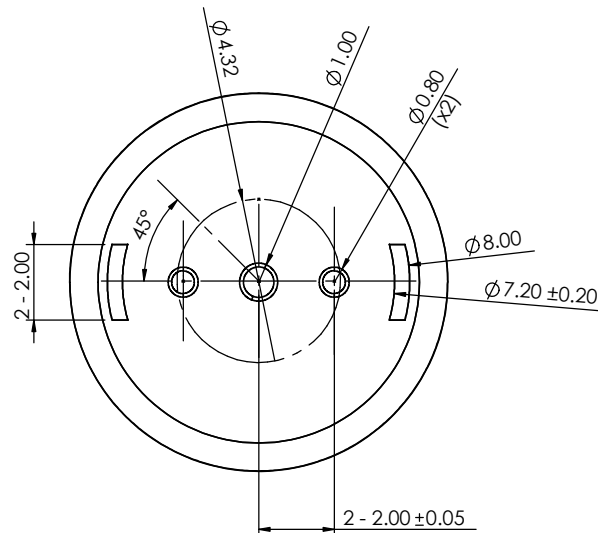
MAGNET: N52

ELECTRICAL:

RATED VOLTAGE (PER CONTACT): 5V

RATED CURRENT (PER CONTACT): 2A

WORKING TEMPERATURE RANGE: -30~+85°C.



PCB LAYOUT
LAYOUT TOLERANCE: ±0.05MM

MAGNETIC SPRING LOADED CONNECTOR, 3POS, MALE

ACAD REFERENCE NO.: 685A03222011D1E		UNIT: MM
DRAWN: J.L.	DATE: 4/13/2023	
CHECKED: R.S.M	DATE: 4/13/2023	
SCALE: (IN CAD 1:1)	SHEET 1 OF 1	
DRAWING NUMBER: 685A03222011D1E	ISSUE	
PART NUMBER: 685A03222011D1E	2	



THIS SERIES FULLY CONFORMS TO
THE EUROPEAN UNION DIRECTIVES
2011/65/EU FOR RoHS COMPLIANCY.



YOUR CONNECTION TO QUALITY & SERVICE

EDAC INC
TORONTO, ONTARIO
CANADA

THESE DRAWINGS AND SPECIFICATIONS
ARE THE PROPERTY OF EDAC INC., AND
SHALL NOT BE REPRODUCED, OR COPIED
OR USED AS THE BASIS FOR THE
MANUFACTURE OR SALE OF APPARATUS
WITHOUT WRITTEN PERMISSION.