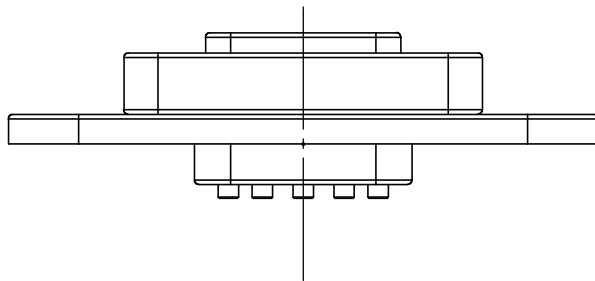
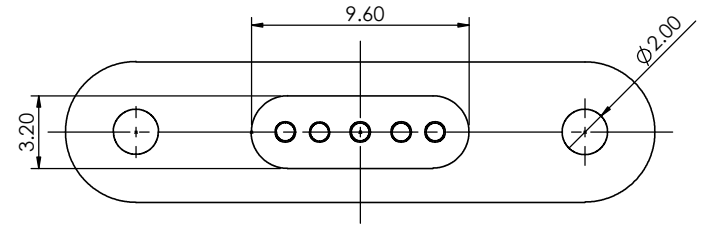
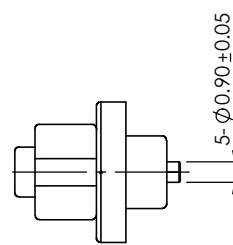
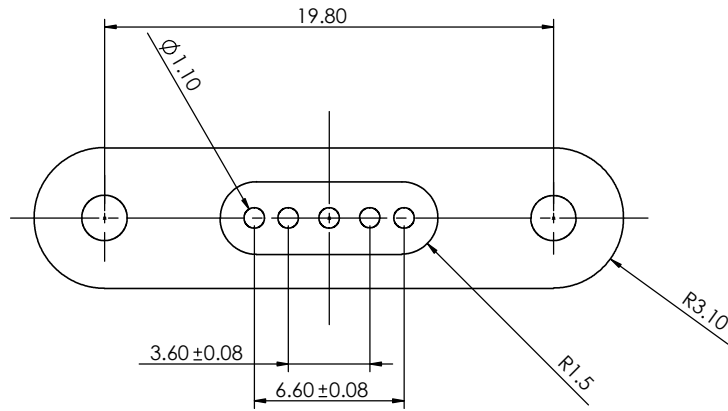


TOLERANCE UNLESS OTHERWISE SPECIFIED	
.X	±0.15
.XX	±0.10

THIS IS A C.A.D. GENERATED DRAWING
DO NOT MAKE MANUAL REVISIONS TO MASTER.



ISSUE NUMBER	
ORIGINAL	①



SPECIFICATION:

MATERIAL:

CONTACT: BRASS, GOLD FLASH PLATING ALL OVER NICKEL UNDERPLATING

HOUSING: PA46, BLACK

MAGNET: N52

ELECTRICAL:

RATED VOLTAGE (PER CONTACT): 12V

RATED CURRENT (PER CONTACT): 2A

INSULATION RESISTANCE: 100MEGAOHMS MIN.

DIELECTRIC WITHSTAND VOLTAGE: 100V AT 60Hz

CONTACT RESISTANCE: 30mOHMS MAX. BEFORE TEST AND 60mOHMS MAX. AFTER TEST
WORKING TEMPERATURE RANGE: -30~+85°C.

**MAGNETIC SPRING LOADED CONNECTOR,
5POS,FEMALE**

ACAD REFERENCE NO.: 686G0524250113E UNIT: MM

DRAWN: J.L. DATE: 3/13/2023

CHECKED: R.S.M DATE: 3/13/2023

SCALE: (IN CAD 1:1) SHEET 1 OF 1

DRAWING NUMBER: 686G0524250113E ISSUE

PART NUMBER: 686G0524250113E 1



THIS SERIES FULLY CONFORMS TO
THE EUROPEAN UNION DIRECTIVES
2011/65/EU FOR RoHS COMPLIANCY.



YOUR CONNECTION TO QUALITY & SERVICE

EDAC INC
TORONTO, ONTARIO
CANADA

THESE DRAWINGS AND SPECIFICATIONS
ARE THE PROPERTY OF EDAC INC., AND
SHALL NOT BE REPRODUCED, OR COPIED
OR USED AS THE BASIS FOR THE
MANUFACTURE OR SALE OF APPARATUS
WITHOUT WRITTEN PERMISSION.