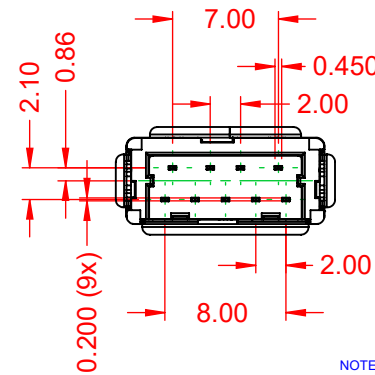
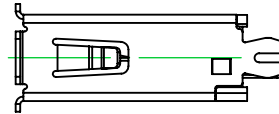
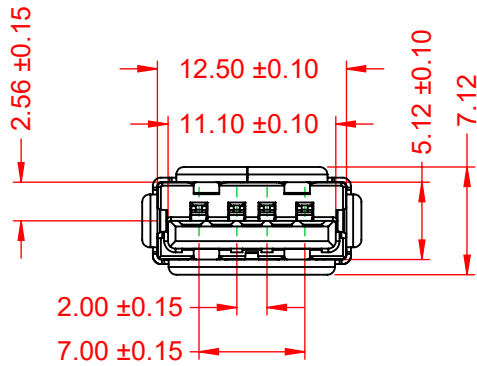
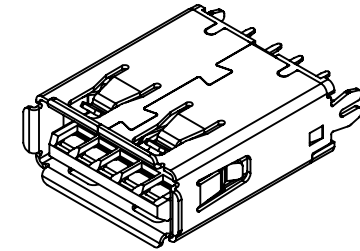
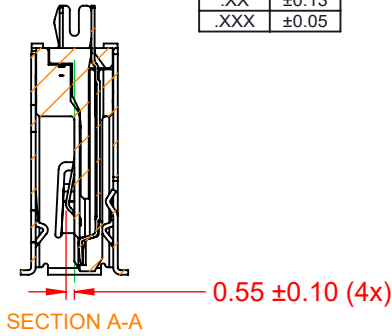
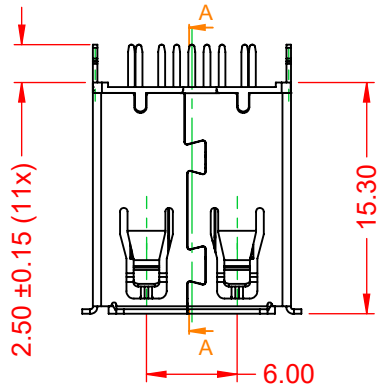


TOLERANCE UNLESS OTHERWISE SPECIFIED	
.X	±0.25
.XX	±0.13
.XXX	±0.05

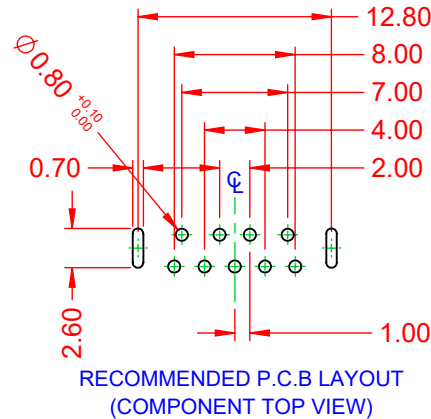
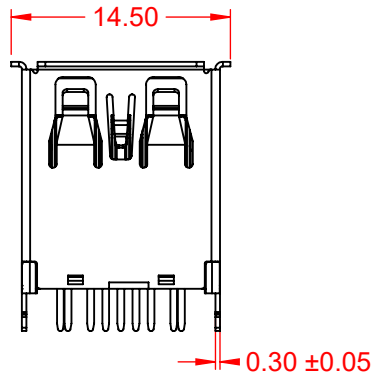
THIS IS A C.A.D. GENERATED DRAWING  
DO NOT MAKE MANUAL REVISIONS TO MASTER.



ISSUE NUMBER	
ORIGINAL	①



**NOTE:**  
**ELECTRICAL SPECIFICATIONS:**  
 VOLTAGE RATING: 30V MAX.  
 CURRENT RATING: 1.8A MIN TOTAL FOR VBUS  
 0.25A MIN FOR OTHER CONTACTS  
 CONTACT RESISTANCE: 30mΩ MAX. INITIAL FOR  
 VBUS AND GND CONTACTS  
 50mΩ MAX. INITIAL FOR  
 ALL OTHER CONTACTS  
 100MΩ min.  
**INSULATOR RESISTANCE:**  
 DIELECTRIC WITHSTANDING  
 VOLTAGE: 100V AC  
 OPERATING TEMPERATURE: -55°C ~ 85°C  
 STORAGE TEMPERATURE: -20°C ~ 60°C  
**MATERIAL & FINISH:**  
 SHELL: STAINLESS STEEL, T=0.30, NICKEL PLATING  
 HOUSING: LCP, BLUE IN COLOUR, UL94V-0  
 CONTACTS: COPPER ALLOY, 30µ" GOLD PLATING



<b>690 SERIES RECEPTACLES USB 3.0 TYPE-A VERTICAL PCB</b>		ACAD REFERENCE NO.: 690F109-64C-012	
		DRAWN: C.B	DATE: December 16, 2020
CHECKED:		DATE:	
SCALE: 2:1	SHEET 1 OF 1		ISSUE
DRAWING NUMBER: 690F109-64C-012		1	
PART NUMBER: 690F109-64C-012		1	



THIS SERIES FULLY CONFORMS TO  
THE EUROPEAN UNION DIRECTIVES  
2011/65/EU FOR RoHS COMPLIANCY.



EDAC INC  
TORONTO, ONTARIO  
CANADA  
YOUR CONNECTION TO QUALITY & SERVICE

THESE DRAWINGS AND SPECIFICATIONS  
ARE THE PROPERTY OF EDAC INC., AND  
SHALL NOT BE REPRODUCED, OR COPIED  
OR USED AS THE BASIS FOR THE  
MANUFACTURE OR SALE OF APPARATUS  
WITHOUT WRITTEN PERMISSION.