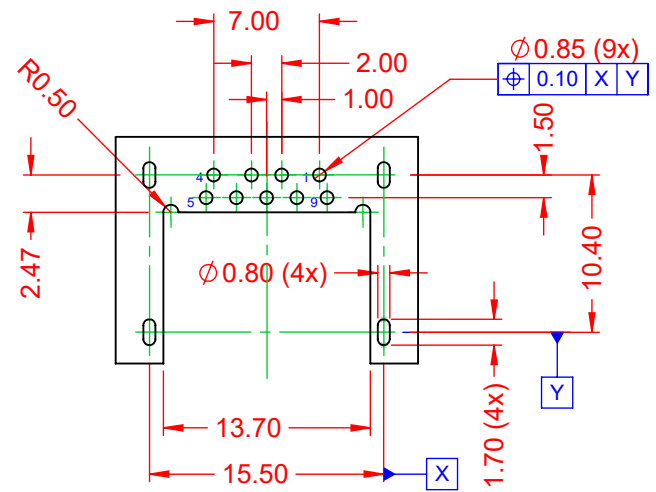
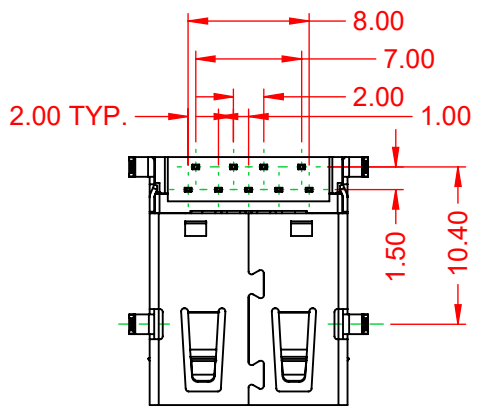
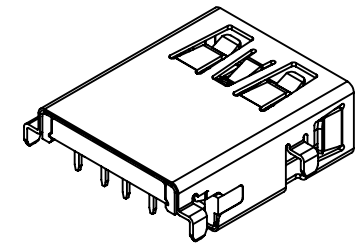
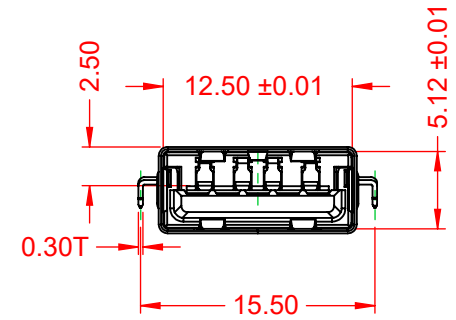
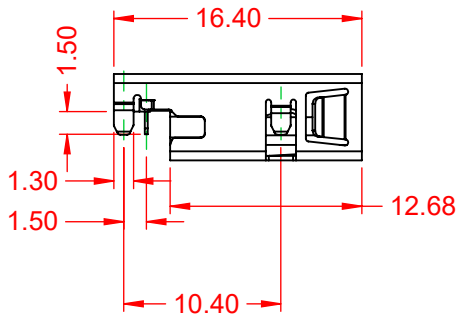
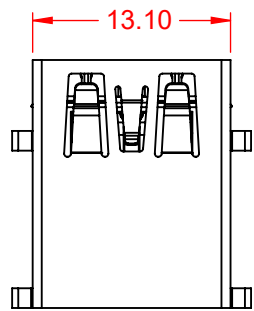


TOLERANCE UNLESS OTHERWISE SPECIFIED	
.X	±0.25
.XX	±0.13
.XXX	±0.05


THIS IS A C.A.D. GENERATED DRAWING
DO NOT MAKE MANUAL REVISIONS TO MASTER.



RECOMMENDED P.C.B HOLE LAYOUT
TOP VIEW (TOLERANCE: ±0.05)

NOTE:
ELECTRICAL SPECIFICATIONS:
VOLTAGE RATING: 30V MAX.
CURRENT RATING: 1.8A FOR PIN 1~4
 0.25A FOR PIN 5~9
CONTACT RESISTANCE: 30mΩ MAX. FOR 1~4 PIN
 50mΩ MAX FOR 5~9 PIN
INSULATOR RESISTANCE: 100MΩ min.
DIELECTRIC WITHSTANDING VOLTAGE: 100V AC
OPERATING TEMPERATURE: -20°C ~ 60°C

MATERIAL & FINISH:
SHELL: STAINLESS STEEL, NICKEL PLATED
HOUSING: PA9T, BLUE IN COLOUR, UL94V-0
CONTACTS: COPPER ALLOY, 30µ" GOLD PLATED

<p align="center">690 SERIES RECEPTACLES USB 3.0 TYPE-A MID-MOUNT PCB</p>		ACAD REFERENCE NO.: 690H509-X52-252	
		DRAWN: C.B	DATE: December 18, 2020
 <p>EDAC INC TORONTO, ONTARIO CANADA YOUR CONNECTION TO QUALITY & SERVICE</p>		CHECKED:	
		DATE:	
<p>THESE DRAWINGS AND SPECIFICATIONS ARE THE PROPERTY OF EDAC INC., AND SHALL NOT BE REPRODUCED, OR COPIED OR USED AS THE BASIS FOR THE MANUFACTURE OR SALE OF APPARATUS WITHOUT WRITTEN PERMISSION.</p>		SCALE: 2:1	SHEET 1 OF 1
		DRAWING NUMBER: 690H509-X52-252	ISSUE
PART NUMBER: 690H509-652-252		1	



THIS SERIES FULLY CONFORMS TO THE EUROPEAN UNION DIRECTIVES 2011/65/EU FOR RoHS COMPLIANCY.