

TOLERANCE UNLESS OTHERWISE SPECIFIED IN MM:
 0.0 ± 0.20 ANGLE x°
 0.00 ± 0.10
 0.000 ± 0.05

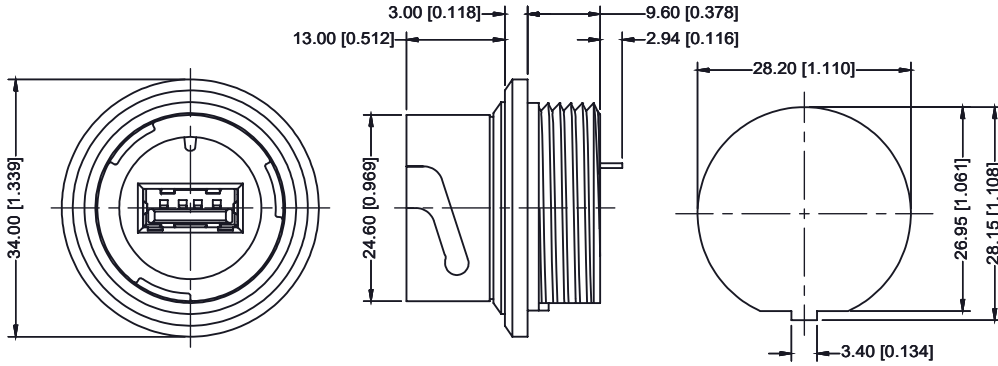
THIS IS A C.A.D. GENERATED DRAWING
 DO NOT MAKE MANUAL REVISIONS TO MASTER.



ISSUE NUMBER

ORIGINAL

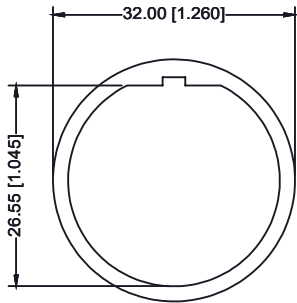
①



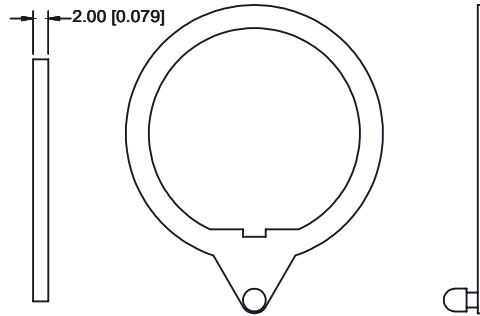
PANEL CUT-OUT

MATERIAL :

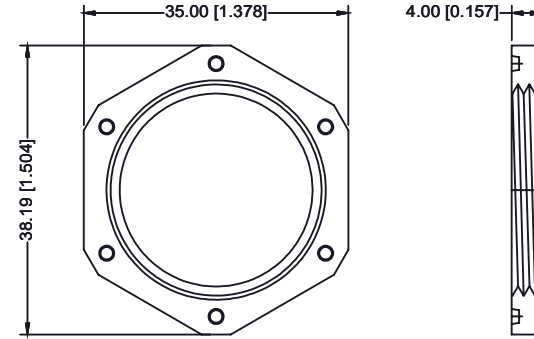
1. USB CONN
- 1-2 . HOUSING : PBT UL 94V-0 ; COLOR : BLACK
- 1-3 . CONTACT : PHOSPHOR BRONZE
- 1-4 . SHELL : BRASS
2. PARTS
- 2-1 . EXTERNAL HOUSING : PBT UL 94V-0 ; COLOR : BLACK
- 2-2 . NUT : PBT UL 94V-0 ; COLOR : BLACK
- 2-3 . WASHER : PBT UL 94V-0 ; COLOR : BLACK
- 2-4 . O-RING : SILICON
3. PLATING
- 3-1 . CONTACT : GOLD FLASH PLATING ON CONTACT AREA
 BRIGHT TIN ON SOLDER AREA
- 3-2 . SHELL : NICKEL PLATING OVER ALL



O-RING



WASHER



NUT



THIS SERIES FULLY CONFORMS TO THE EUROPEAN UNION DIRECTIVES 2011/65/EU FOR RoHS COMPLIANCY.

WATERPROOF USB TYPE A, 4P (FEMALE)		ACAD REFERENCE NO.: 690-W04-X60-014	
		DRAWN: R. STA. MONICA	DATE: APR. 07/2014
		CHECKED:	DATE:
EDAC INC TORONTO, ONTARIO CANADA		PART NUMBER	
		690-W04-260-014	
YOUR CONNECTION TO QUALITY & SERVICE		SHEET 1 OF 1	
		DRAWING NUMBER	
THESE DRAWINGS AND SPECIFICATIONS ARE THE PROPERTY OF EDAC INC., AND SHALL NOT BE REPRODUCED, OR COPIED OR USED AS THE BASIS FOR THE MANUFACTURE OR SALE OF APPARATUS WITHOUT WRITTEN PERMISSION.		690-W04-260-014	
		ISSUE	
		1	