

TOLERANCE UNLESS OTHERWISE SPECIFIED IN MM:  
 0.0 ± 0.20 ANGLE x°  
 0.00 ± 0.10  
 0.000 ± 0.05

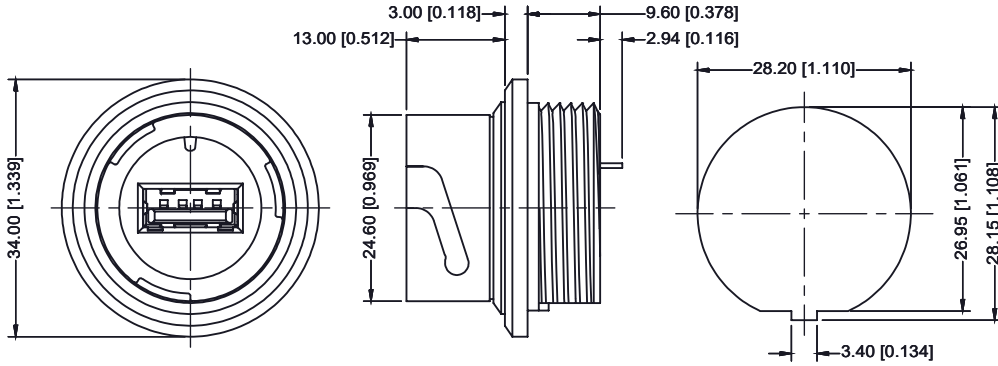
THIS IS A C.A.D. GENERATED DRAWING  
 DO NOT MAKE MANUAL REVISIONS TO MASTER.



ISSUE NUMBER

ORIGINAL

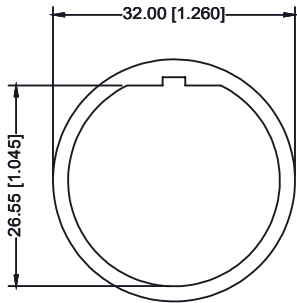
1



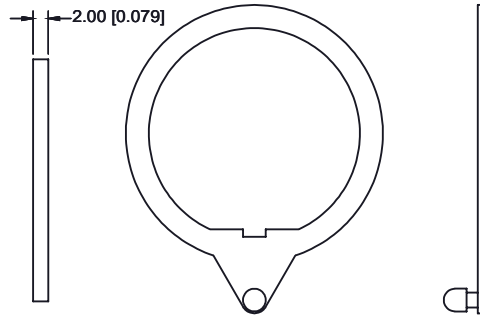
**PANEL CUT-OUT**

**MATERIAL :**

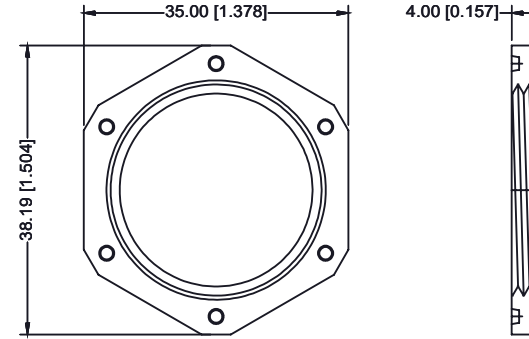
1. USB CONN
  - 1-2 . HOUSING : PBT UL 94V-0 ; COLOR : BLACK
  - 1-3 . CONTACT : PHOSPHOR BRONZE
  - 1-4 . SHELL : BRASS
2. PARTS
  - 2-1 . EXTERNAL HOUSING : PBT UL 94V-0 ; COLOR : BLACK
  - 2-2 . NUT : PBT UL 94V-0 ; COLOR : BLACK
  - 2-3 . WASHER : PBT UL 94V-0 ; COLOR : BLACK
  - 2-4 . O-RING : SILICON
3. PLATING
  - 3-1 . CONTACT : GOLD PLATING ON CONTACT AREA  
BRIGHT TIN ON SOLDER AREA
  - 3-2 . SHELL : NICKEL PLATING OVER ALL



**O-RING**




**WASHER**



**NUT**



THIS SERIES FULLY CONFORMS TO THE EUROPEAN UNION DIRECTIVES 2011/65/EU FOR RoHS COMPLIANCY.

<b>WATERPROOF USB TYPE A, 4P (FEMALE)</b>		ACAD REFERENCE NO.: 690-W04-X60-014	
		DRAWN: R. STA. MONICA	DATE: APR. 07/2014
 <b>EDAC INC</b> TORONTO, ONTARIO CANADA YOUR CONNECTION TO QUALITY & SERVICE		CHECKED:	
		DATE:	
THESE DRAWINGS AND SPECIFICATIONS ARE THE PROPERTY OF EDAC INC., AND SHALL NOT BE REPRODUCED, OR COPIED OR USED AS THE BASIS FOR THE MANUFACTURE OR SALE OF APPARATUS WITHOUT WRITTEN PERMISSION.		PART NUMBER	
		<b>690-W04-660-014</b>	
<b>690-W04-660-014</b>		SHEET 1 OF 1	
		DRAWING NUMBER	
<b>690-W04-660-014</b>		ISSUE	
		<b>1</b>	