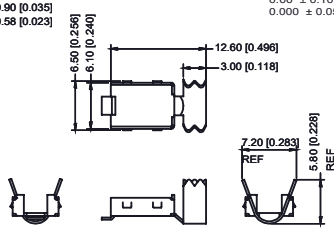
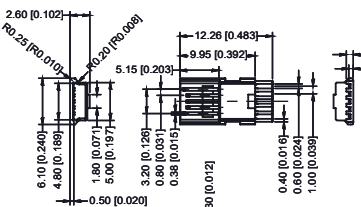


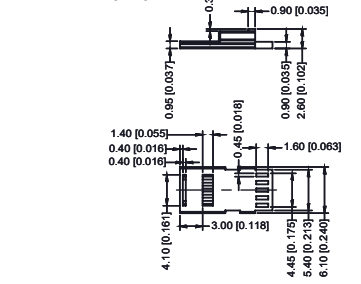


TOLERANCES UNLESS OTHERWISE SPECIFIED IN MM:
0.0 ± 0.20 ANGLE x°
0.00 ± 0.10
0.000 ± 0.05

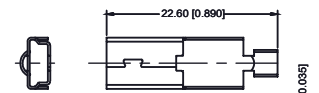
THIS IS A C.A.D. GENERATED DRAWING
DO NOT MAKE MANUAL REVISIONS TO MASTER.



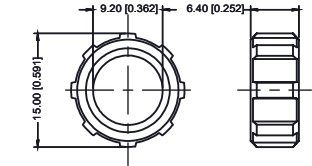
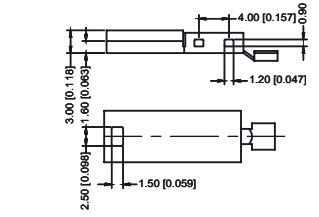
TOP METAL SHELL



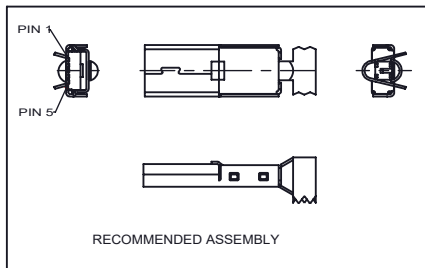
INSULATOR



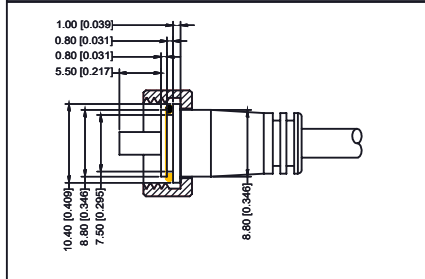
BOTTOM METAL SHELL



NUT



RECOMMENDED ASSEMBLY



1. MATERIAL :
 - 1-1. HOUSING : PBT UL 94V-0
COLOR : BLACK
 - 1-2. CONTACT : BRASS
OTHER AREA : GOLD FLASH
SOLDER AREA : BRIGHT TIN
 - 1-3. NUT: PBT UL94V-0
 - 1-4. O-RING : NBR (1*8) ; COLOR : BLACK.
2. FINISH :
 - 2-1. CONTACT AREA : GOLD PLATED
 - 2-2. OTHER AREA : GOLD FLASH
 - 2-3. SOLDER AREA : BRIGHT TIN
3. SPECIFICATION:
 - 3-1. WATER PROOF: IPX7



THIS SERIES FULLY COMPLIES TO THE EUROPEAN UNION DIRECTIVES 2011/65/EU FOR RoHS COMPLIANCE.

EDAC INC
TORONTO, ONTARIO
CANADA
YOUR CONNECTION TO QUALITY & SERVICE

THESE DRAWINGS AND SPECIFICATIONS ARE THE PROPERTY OF EDAC INC, AND SHALL NOT BE REPRODUCED OR COPIED OR USED AS THE BASIS FOR THE MANUFACTURE OR SALE OF APPARATUS WITHOUT WRITTEN PERMISSION.

WATERPROOF MINI USB TYPE B, 5P (MALE)

ACAD REFERENCE NO. : 690-W05-X60-043	
DRAWN:R.STA.MONICA	DATE: MAY.01/2014
CHECKED:	DATE:
PART NUMBER 690-W05-360-043	
SHEET 1 OF 1	
DRAWING NUMBER 690-W05-360-043	ISSUE 2