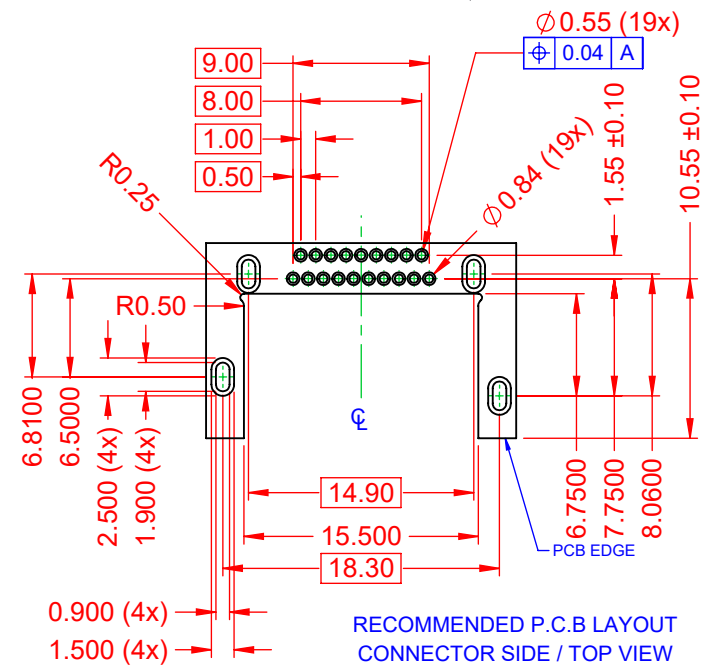
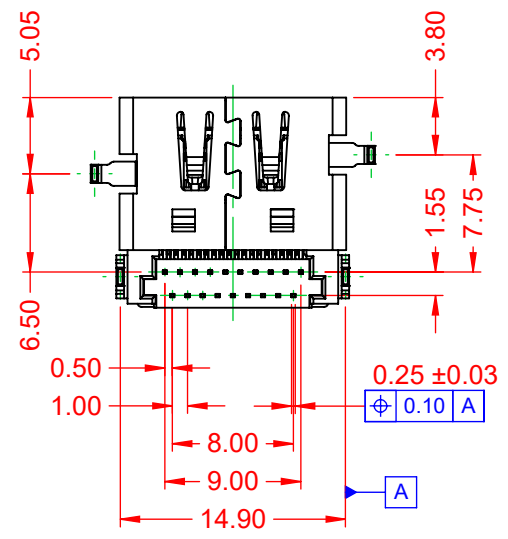
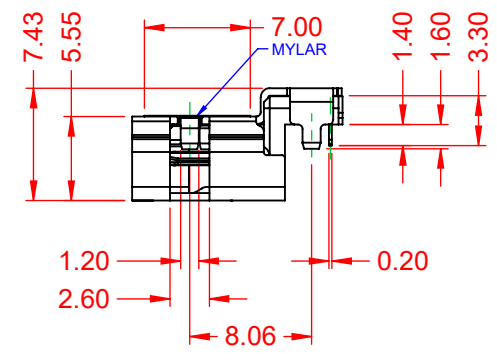
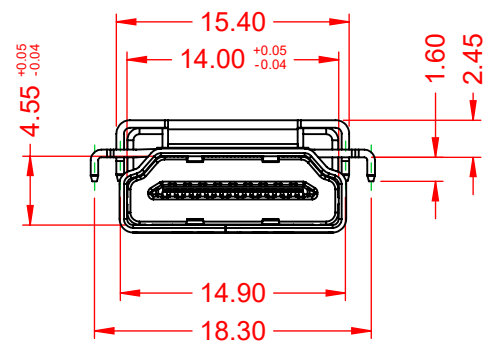
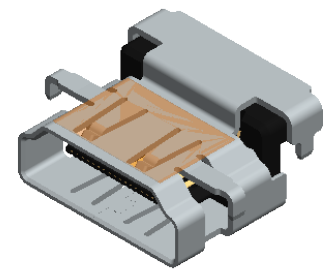
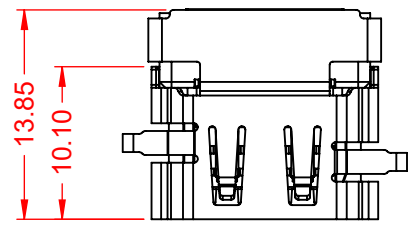


THIS IS A C.A.D. GENERATED DRAWING
DO NOT MAKE MANUAL REVISIONS TO MASTER.



| TOLERANCE UNLESS OTHERWISE SPECIFIED | |
|--------------------------------------------|-------|
| .X | ±0.25 |
| .XX | ±0.15 |
| .XXX | ±0.05 |
| .XXXX | ±0.02 |



RECOMMENDED P.C.B LAYOUT
CONNECTOR SIDE / TOP VIEW

NOTE:
ELECTRICAL SPECIFICATIONS:
 CURRENT RATING: 0.5A
 VOLTAGE RATING: 40V AC
 CONTACT RESISTANCE: 30mΩ MAX.
 DIELECTRIC WITHSTANDING VOLTAGE: 500V AC/ 1 MINUTE
 INSULATOR RESISTANCE:
 A) UNMATED: 100MΩ min. @ 500 VDC
 B) MATED: 10M min. @ 150 VDC
 OPERATING TEMPERATURE: -20°C~85°C
 STORAGE TEMPERATURE: -20°C~65°C

MATERIAL & FINISH:
 SHELL: COPPER ALLOY, NICKEL PLATED
 HOUSING: LCP, BLACK IN COLOUR, UL94V-0
 CONTACTS: COPPER ALLOY, 5µ" GOLD PLATED



THIS SERIES FULLY CONFORMS TO
THE EUROPEAN UNION DIRECTIVES
2011/65/EU FOR RoHS COMPLIANCY.

EDAC EDAC INC
TORONTO, ONTARIO
CANADA
YOUR CONNECTION TO QUALITY & SERVICE

THESE DRAWINGS AND SPECIFICATIONS
ARE THE PROPERTY OF EDAC INC., AND
SHALL NOT BE REPRODUCED, OR COPIED
OR USED AS THE BASIS FOR THE
MANUFACTURE OR SALE OF APPARATUS
WITHOUT WRITTEN PERMISSION.

| | | | |
|-------------------------------------------|--|-------------------------------------|-----------------------|
| HDMI TYPE A RECEPTACLE - MID-MOUNT | | ACAD REFERENCE NO.: 694C519-X53-011 | |
| | | DRAWN: C.B | DATE: January 5, 2021 |
| | | CHECKED: | DATE: |
| | | SCALE: 2:1 | SHEET 1 OF 1 |
| DRAWING NUMBER: 694C519-X53-011 | | | ISSUE |
| PART NUMBER: 694C519-153-011 | | | 1 |