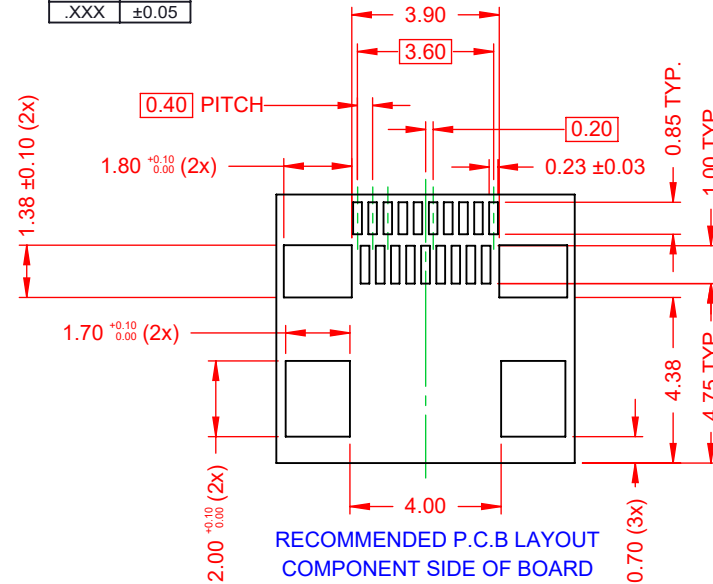
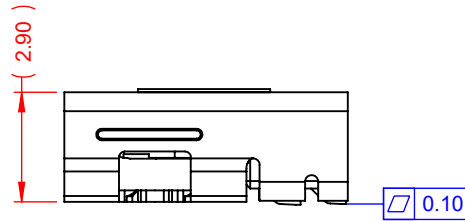
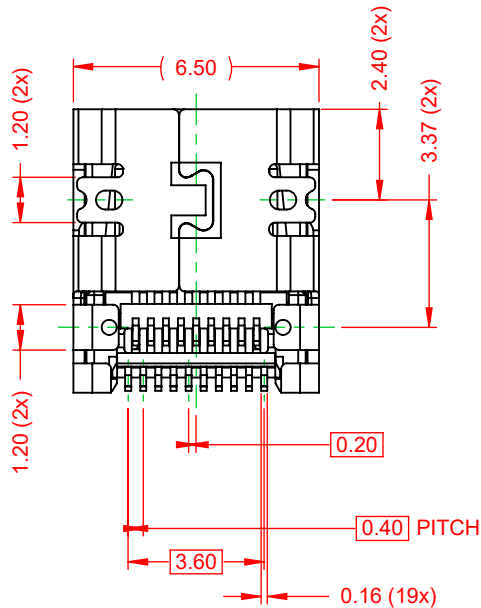
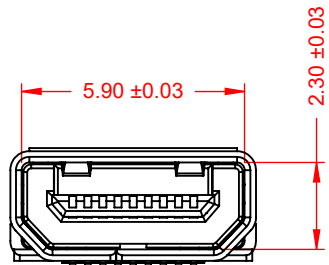
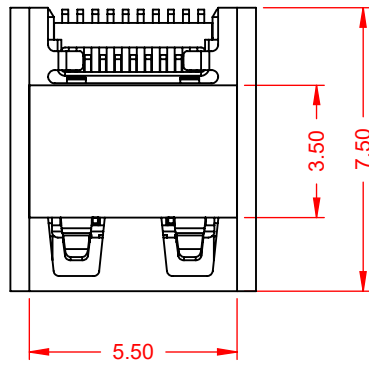


| TOLERANCE UNLESS OTHERWISE SPECIFIED | |
|--|-------|
| .X | ±0.25 |
| .XX | ±0.13 |
| .XXX | ±0.05 |

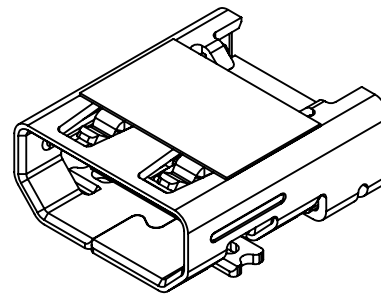
THIS IS A C.A.D. GENERATED DRAWING
DO NOT MAKE MANUAL REVISIONS TO MASTER.



| ISSUE NUMBER | |
|--------------|---|
| ORIGINAL | ① |



RECOMMENDED P.C.B LAYOUT
COMPONENT SIDE OF BOARD
TOLERANCE: ±0.05



NOTE:

ELECTRICAL SPECIFICATIONS:

| | |
|----------------------------------|-----------------------|
| CURRENT RATING: | 0.3A MIN. 0.8A MAX. |
| VOLTAGE RATING: | 40VAC MAX. 30VDC MAX. |
| CONTACT RESISTANCE: | 10mΩ MAX. |
| DIELECTRIC WITHSTANDING VOLTAGE: | |
| UNMATED CONNECTORS APPLY: | 250C AC(RMS) |
| MATED CONNECTORS APPLY: | 150C AC(RMS) |
| INSULATOR RESISTANCE: | 100MΩ min. |
| OPERATING TEMPERATURE: | -25°C~80°C |

MATERIAL & FINISH:

| | |
|-----------|---|
| SHELL: | STAINLESS STEEL, HALF BRIGHT TIN PLATED |
| HOUSING: | LCP, BLACK IN COLOUR, UL94V-0 |
| CONTACTS: | COPPER ALLOY, GOLD FLASH PLATED |



THIS SERIES FULLY CONFORMS TO
THE EUROPEAN UNION DIRECTIVES
2011/65/EU FOR RoHS COMPLIANCY.



YOUR CONNECTION TO QUALITY & SERVICE

EDAC INC
TORONTO, ONTARIO
CANADA

THESE DRAWINGS AND SPECIFICATIONS
ARE THE PROPERTY OF EDAC INC., AND
SHALL NOT BE REPRODUCED, OR COPIED
OR USED AS THE BASIS FOR THE
MANUFACTURE OR SALE OF APPARATUS
WITHOUT WRITTEN PERMISSION.

690 SERIES RECEPTACLES HDMI TYPE-D

| | |
|-------------------------------------|-----------------------|
| ACAD REFERENCE NO.: 694H319-X66-211 | |
| DRAWN: C.B | DATE: January 4, 2021 |
| CHECKED: | DATE: |
| SCALE: 5:1 | SHEET 1 OF 1 |
| DRAWING NUMBER: 694H319-X66-211 | ISSUE |
| PART NUMBER: 694H319-266-211 | 1 |