

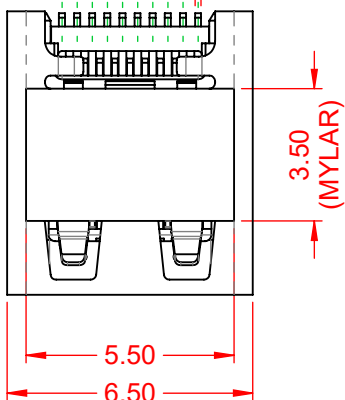
THIS IS A C.A.D. GENERATED DRAWING  
DO NOT MAKE MANUAL REVISIONS TO MASTER.



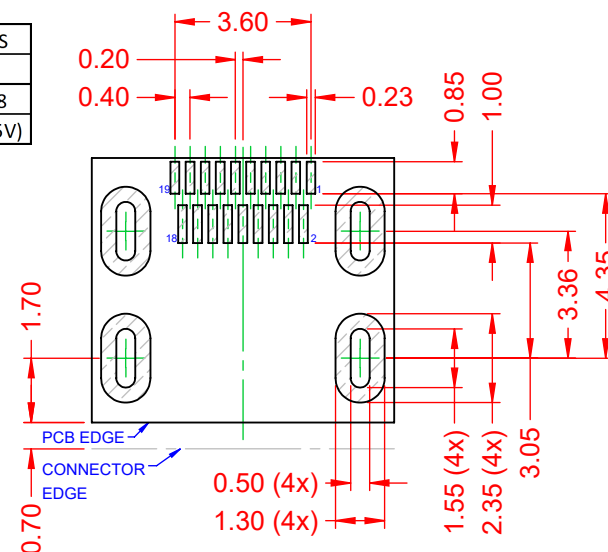
TOLERANCE  
UNLESS OTHERWISE  
SPECIFIED

.X	±0.25
.XX	±0.13
.XXX	±0.05

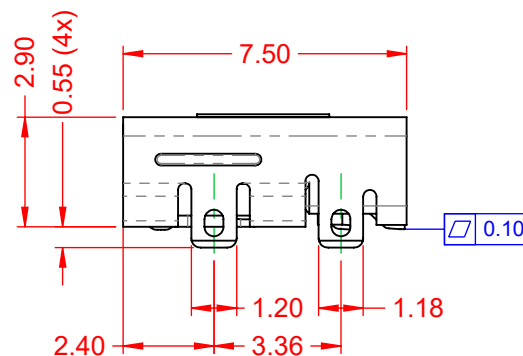
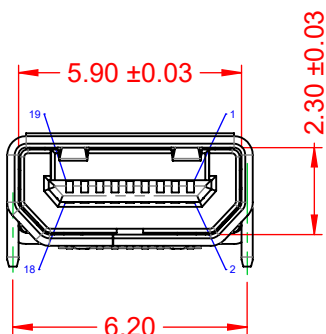
3.60 ±0.10  
0.40 ±0.05 (9x)  
0.16 ±0.05 (19x)



PIN	SIGNAL	PIN	SIGNAL	CONNECTION	SIGNALS
1	HOT PLUG DETECT	2	UTILITY	1ST MADE	SHELL
3	TMDS DATA2+	4	TMDS DATA2 SHIELD	2ND MADE	PINS 1 - 18
5	TMDS DATA2-	6	TMDS DATA1+	3RD MADE	PIN 19 (+5V)
7	TMDS DATA1 SHIELD	8	TMDS DATA1-		
9	TMDS DATA0+	10	TMDS DATA0 SHIELD		
11	TMDS DATA0-	12	TMDS CLOCK+		
13	TMDS CLOCK SHIELD	14	TMDS CLOCK-		
15	CEC	16	DDC / CEC GROUND		
17	SCL	18	SDA		
19	+5V POWER				

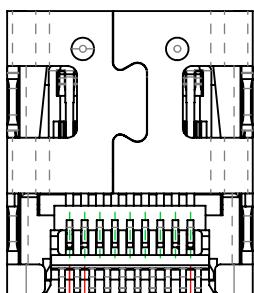


RECOMMENDED P.C.B LAYOUT  
COMPONENT SIDE OF BOARD  
TOLERANCE: ±0.05



**NOTE:**  
ELECTRICAL SPECIFICATIONS:  
CURRENT RATING: 0.3A MIN. 0.8A MAX.  
VOLTAGE RATING: 40VAC MAX. 30VDC MAX.  
CONTACT RESISTANCE: 10mΩ MAX.  
DIELECTRIC WITHSTANDING VOLTAGE:  
UNMATED CONNECTORS APPLY: 250C AC(RMS)  
MATED CONNECTORS APPLLE: 150C AC(RMS)  
INSULATOR RESISTANCE: 100MΩ min.  
OPERATING TEMPERATURE: -25°C~80°C

**MATERIAL & FINISH:**  
SHELL: STAINLESS STEEL, HALF BRIGHT TIN PLATED  
HOUSING: LCP, BLACK IN COLOUR, UL94V-0  
CONTACTS: COPPER ALLOY, 15µ" GOLD PLATED



0.40 ±0.05 (8x)  
3.20 ±0.10

105 SERIES - VERTICAL CONTACT PATTERN

ACAD REFERENCE NO.: 694H319-X62-211	
DRAWN: C.B	DATE: January 4, 2021
CHECKED:	DATE:
SCALE: 5:1	SHEET 1 OF 1
DRAWING NUMBER: 694H319-X62-211	ISSUE
PART NUMBER: 694H319-562-211	1



THIS SERIES FULLY CONFORMS TO  
THE EUROPEAN UNION DIRECTIVES  
2011/65/EU FOR RoHS COMPLIANCY.



EDAC INC  
TORONTO, ONTARIO  
CANADA  
YOUR CONNECTION TO QUALITY & SERVICE

THESE DRAWINGS AND SPECIFICATIONS  
ARE THE PROPERTY OF EDAC INC., AND  
SHALL NOT BE REPRODUCED, OR COPIED  
OR USED AS THE BASIS FOR THE  
MANUFACTURE OR SALE OF APPARATUS  
WITHOUT WRITTEN PERMISSION.