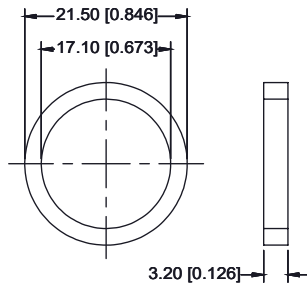
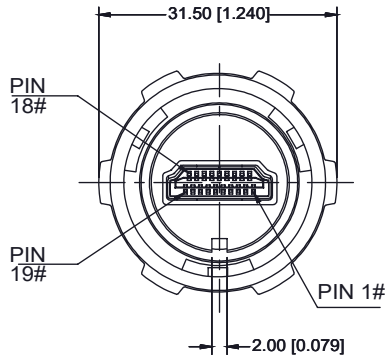
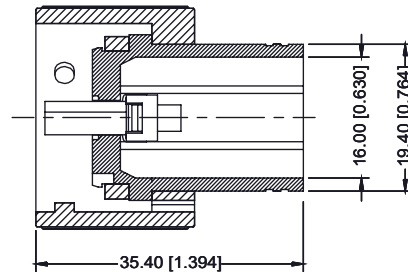
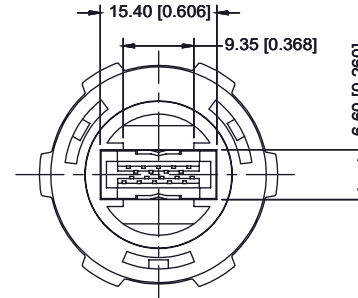
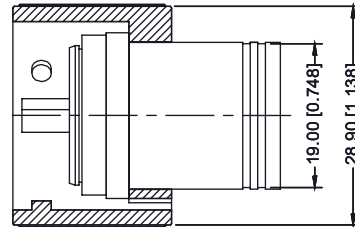
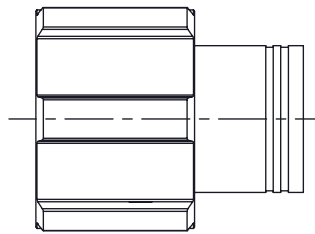


THIS IS A C.A.D. GENERATED DRAWING
DO NOT MAKE MANUAL REVISIONS TO MASTER.



TOLERANCE UNLESS OTHERWISE
SPECIFIED IN MM:
0.0 ± 0.20 ANGLE x°
0.00 ± 0.10
0.000 ± 0.05



O-RING

1. MATERIAL :

- 1-1. EXTERNAL HOUSING : PBT UL94V-0 ; COLOR : BLACK
- 1-2. EXTERNAL NUT : PBT UL94V-0 ; COLOR : BLACK
- 1-3. O-RING : SILICONE ; COLOR : BROWN
- 1-4. HDMI:
 - 1-4-1. FRONT HOUSING: LCP
 - 1-4-2. BACK HOUSING: PBT+GF30%
 - 1-4-3. CONTACT : PHOSPHOR BRONZE
 - 1-4-4. SHELL: BRASS

2. FINISH :

- 2-1. CONTACT : 15µ" GOLD PLATED
SOLDER TAILS: TIN 100µ"
UNDER PLATE : NICKEL
- 2-2. SHELL: GOLD FLASH

3. ELECTRICAL SPECIFICATIONS:

- 3-1. WATER PROOF: IPX7

OPERATING TEMPERATURE:-25°C TO +85°C

WATERPROOF HDMI BLACK TYPE A, 180°
(MALE)

ACAD REFERENCE NO.: 694-W19-X60-011

DRAWN:R.STA.MONICA

DATE: JAN.09/2014

CHECKED:

DATE:

PART NUMBER

694-W19-360-011

SHEET 1 OF 2

DRAWING NUMBER

694-W19-360-011

ISSUE

1



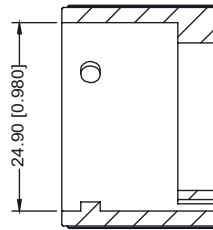
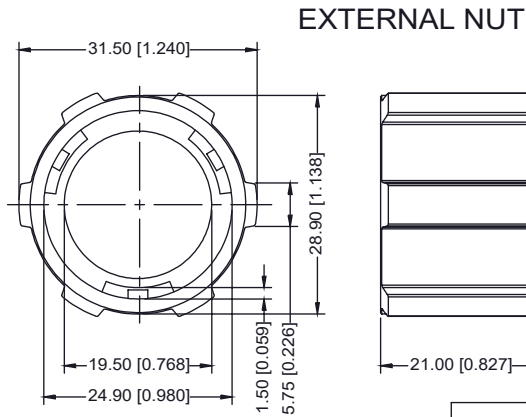
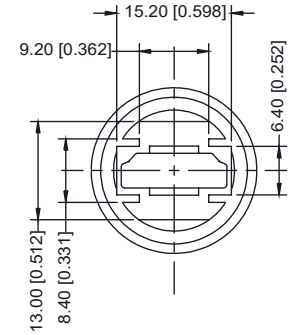
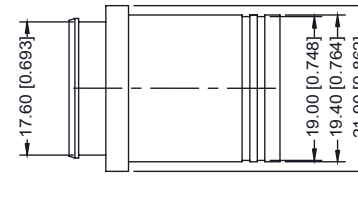
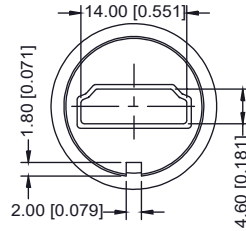
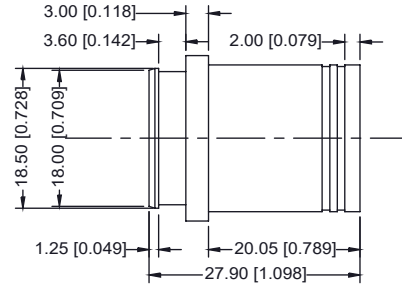
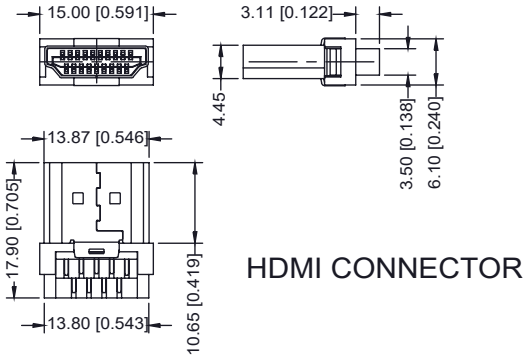
THIS SERIES FULLY CONFORMS TO THE
EUROPEAN UNION DIRECTIVES
2011/65/EU FOR RoHS COMPLIANCY.



YOUR CONNECTION TO QUALITY & SERVICE

EDAC INC
TORONTO, ONTARIO
CANADA

THESE DRAWINGS AND SPECIFICATIONS
ARE THE PROPERTY OF EDAC INC. AND
SHALL NOT BE REPRODUCED OR COPIED
OR USED AS THE BASIS FOR THE
MANUFACTURE OR SALE OF APPARATUS
WITHOUT WRITTEN PERMISSION.



**WATERPROOF HDMI BLACK TYPE A, 180°
(MALE)**



THIS SERIES FULLY CONFORMS TO THE EUROPEAN UNION DIRECTIVES 2011/65/EU FOR RoHS COMPLIANCY.



YOUR CONNECTION TO QUALITY & SERVICE

EDAC INC
TORONTO, ONTARIO
CANADA

THESE DRAWINGS AND SPECIFICATIONS ARE THE PROPERTY OF EDAC INC., AND SHALL NOT BE REPRODUCED OR COPIED OR USED AS THE BASIS FOR THE MANUFACTURE OR SALE OF APPARATUS WITHOUT WRITTEN PERMISSION.

ACAD REFERENCE NO.: 694-W19-X60-011

DRAWN: R.STA.MONICA

DATE: JAN.09/2014

CHECKED:

DATE:

PART NUMBER

694-W19-360-011

SHEET 2 OF 2

DRAWING NUMBER

694-W19-360-011

ISSUE

1