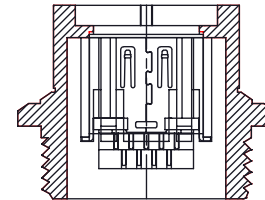
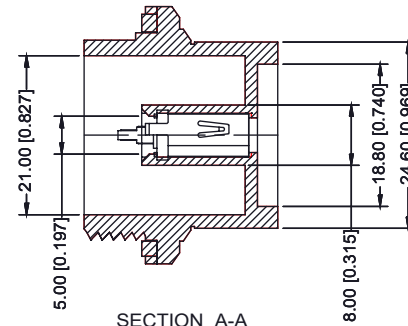
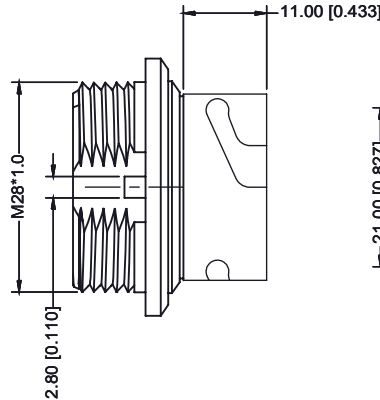
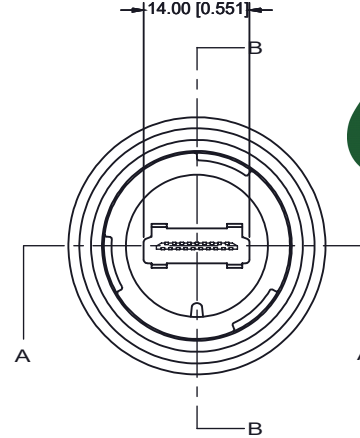
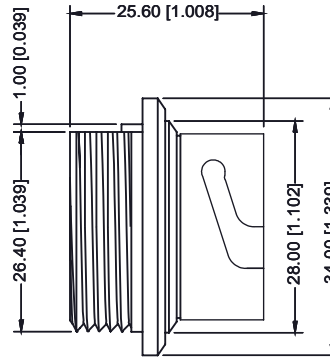
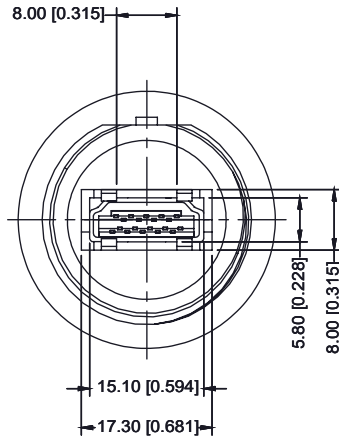


TOLERANCE UNLESS OTHERWISE SPECIFIED IN MM:  
 0.0 ± 0.20 ANGLE x°  
 0.00 ± 0.10  
 0.000 ± 0.05

THIS IS A C.A.D. GENERATED DRAWING  
 DO NOT MAKE MANUAL REVISIONS TO MASTER.



|   |   |
|---|---|
| ISSUE NUMBER                                | ① |
| ORIGINAL                                    | ② |
| REMOVE HEX NUT<br>R.STA.MONICA JUNE.18/2014 |   |



SECTION A-A

SECTION B-B

1. MATERIAL :

1-1. EXTERNAL HOUSING: PBT UL94V-0 ; COLOR : BLACK

1-2. HOUSING: LCP UL94V-0 ; COLOR : BLACK

1-3. CONTACT: PHOSPHOR BRONZE

1-4. SHELL: BRASS

2. FINISH :

2-1. CONTACT : 15µ" GOLD PLATED

SOLDER TAILS: BRIGHT TIN 100µ"

UNDERPLATED NICKEL OVER ALL 50µ" MIN

2-3. SHELL: GOLD FLASH

3. WATER PROOF: IPX7

WATERPROOF HDMI BLACK TYPE A, 180°  
(FEMALE)



THIS SERIES FULLY CONFORMS TO THE EUROPEAN UNION DIRECTIVES 2011/65EU FOR RoHS COMPLIANCY.



YOUR CONNECTION TO QUALITY & SERVICE

EDAC INC  
TORONTO, ONTARIO  
CANADA

THESE DRAWINGS AND SPECIFICATIONS ARE THE PROPERTY OF EDAC INC. AND SHALL NOT BE REPRODUCED OR COPIED OR USED AS THE BASIS FOR THE MANUFACTURE OR SALE OF APPARATUS WITHOUT WRITTEN PERMISSION.

ACAD REFERENCE NO.: 694-W19-X60-012

DRAWN:R.STA.MONICA

DATE: JAN.09/2014

CHECKED:

DATE:

PART NUMBER

694-W19-360-012

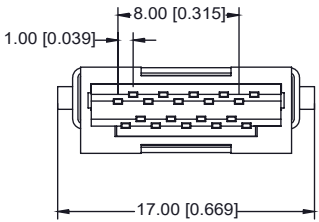
SHEET 1 OF 2

DRAWING NUMBER

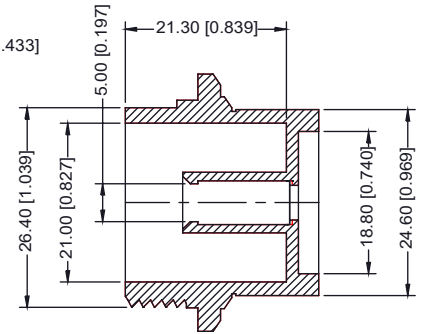
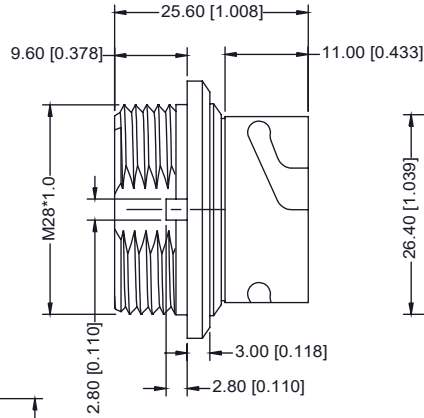
694-W19-360-012

ISSUE

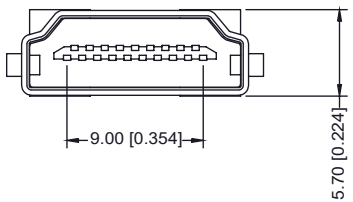
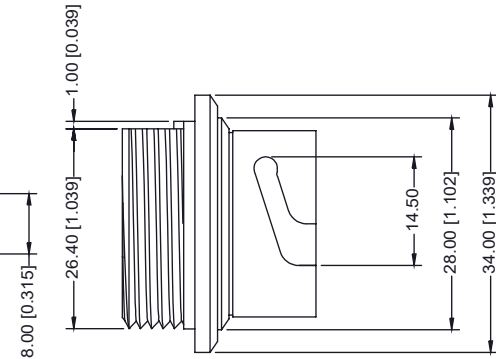
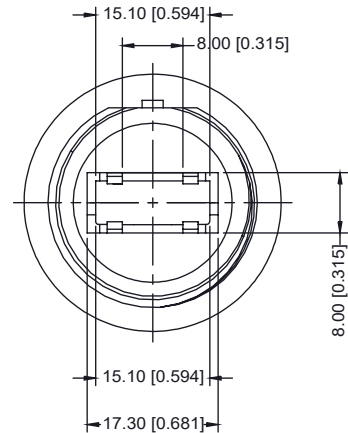
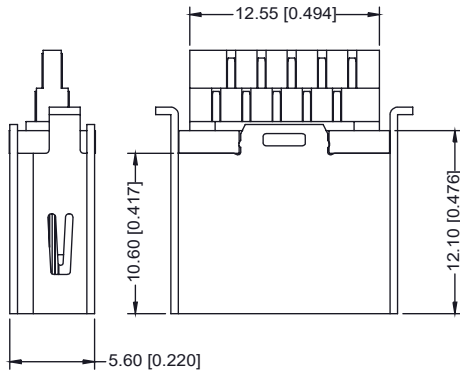
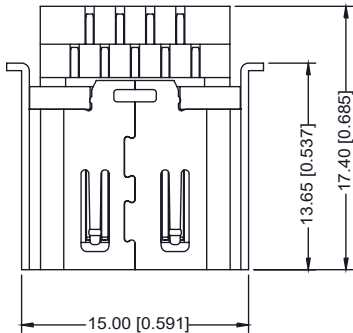
2



**HDMI CONNECTOR**  
**SCALE 2:1**



**EXTERNAL HOUSING**



**WATERPROOF HDMI BLACK TYPE A, 180°  
(FEMALE)**

ACAD REFERENCE NO.: 694-W19-X60-012

DRAWN: R.STA.MONICA      DATE: JAN.09/2014

CHECKED:      DATE:

PART NUMBER  
**694-W19-360-012**      SHEET 2 OF 2

DRAWING NUMBER  
**694-W19-360-012**      ISSUE  
2



THIS SERIES FULLY CONFORMS TO THE  
EUROPEAN UNION DIRECTIVES  
2011/65EU FOR RoHS COMPLIANCE.



YOUR CONNECTION TO QUALITY & SERVICE

**EDAC INC**  
TORONTO, ONTARIO  
CANADA

THESE DRAWINGS AND SPECIFICATIONS  
ARE THE PROPERTY OF EDAC INC., AND  
SHALL NOT BE REPRODUCED, OR COPIED  
OR USED AS THE BASIS FOR THE  
MANUFACTURE OR SALE OF APPARATUS  
WITHOUT WRITTEN PERMISSION.