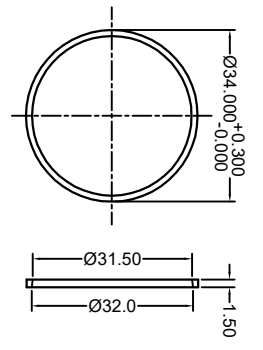
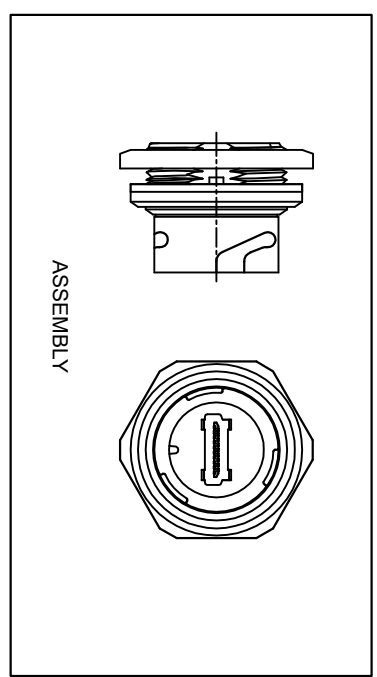


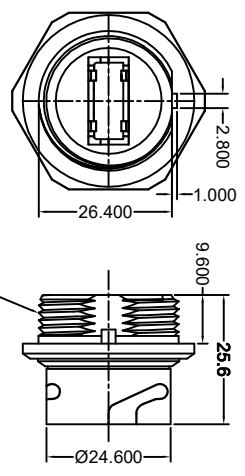
THIS IS A C.A.D. GENERATED DRAWING
DO NOT MAKE MANUAL REVISIONS TO MASTER

ORIGINAL

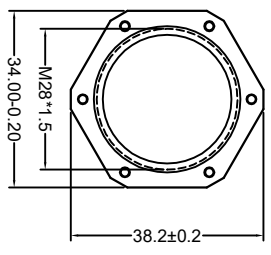
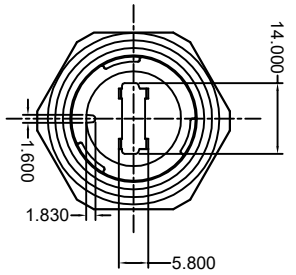
TOLERANCE UNLESS OTHERWISE SPECIFIED	
X	±0.20
XX	±0.10
XXX	±0.05



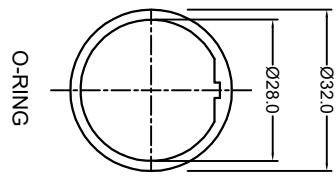
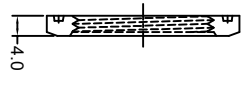
RING



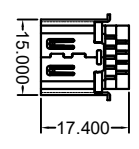
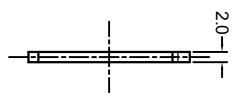
M28*1.5
BODY



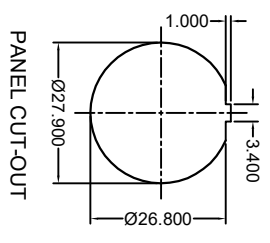
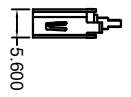
NUT



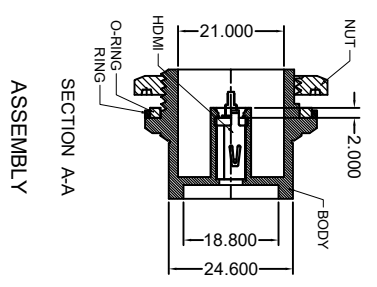
O-RING



HDMI



PANEL CUT-OUT



SECTION A-A
ASSEMBLY

NOTES:

MATERIAL:

- BODY: PBT, BLACK COLOUR, UL94V-0
- RING: PBT, BLACK COLOUR, UL94V-0
- O-RING: SILICONE, BLACK COLOUR
- NUT: PBT, BLACK COLOUR, UL94V-0
- HDMI: BRONZE, 15µ" GOLD PLATING ON CONTACT AREA, MATTE TIN ON SOLDER AREA, ALL OVER NICKEL UNDER-PLATING
- SHELL: BRASS, GOLD FLASH PLATING ON CONTACT AREA, ALL OVER NICKEL UNDER-PLATING

OPERATING TEMPERATURE: -20°C ~ 85°C

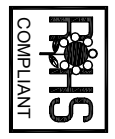
- CURRENT RATING: 0.5A
- VOLTAGE RATING: 40V
- WATERPROOFING: IPX8

WATERPROOF HDMI BLACK TYPE A,
PANEL MOUNT (FEMALE)

EDRHC
EDAC INC
TORONTO, ONTARIO
CANADA
YOUR CONNECTION TO QUALITY & SERVICE

THESE DRAWINGS AND SPECIFICATIONS ARE THE PROPERTY OF EDAC INC. AND SHALL NOT BE REPRODUCED OR COPIED OR USED AS THE BASIS FOR THE MANUFACTURE OR SALE OF APPARATUS WITHOUT WRITTEN PERMISSION.

ACAD REFERENCE NO.:	694-W19-280-015	
DRAWN:	N.B.	DATE: JUN 28/2021
CHECKED:	R.S.M.	DATE: JUN 28/2021
SCALE:	(IN C.A.D. 1:1)	SHEET 1 OF 1
DRAWING NUMBER:	694-W19-360-015	ISSUE 1
PART NUMBER:	694-W19-360-015	



THIS SERIES FULLY CONFORMS TO THE EUROPEAN UNION DIRECTIVES 2011/65/EU FOR ROHS COMPLIANCY.