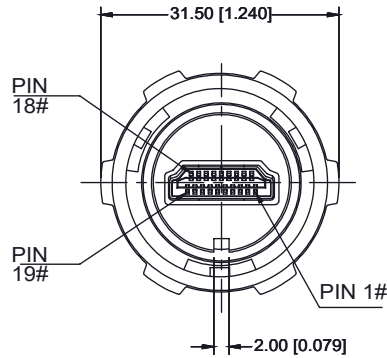
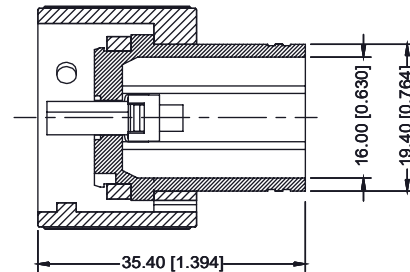
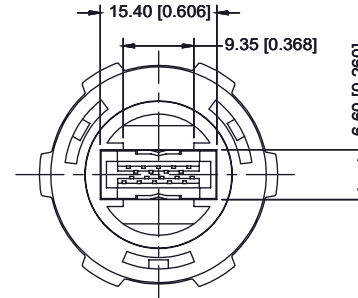
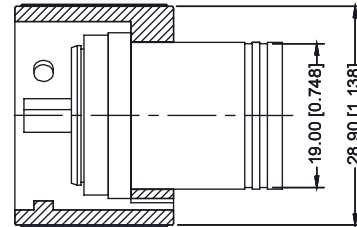
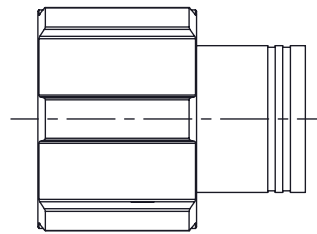


THIS IS A C.A.D. GENERATED DRAWING  
DO NOT MAKE MANUAL REVISIONS TO MASTER.



TOLERANCE UNLESS OTHERWISE  
SPECIFIED IN MM:  
0.0 ± 0.20 ANGLE x°  
0.00 ± 0.10  
0.000 ± 0.05



1. MATERIAL :

- 1-1. EXTERNAL HOUSING : PBT UL94V-0 ; COLOR : BLACK
- 1-2. EXTERNAL NUT : PBT UL94V-0 ; COLOR : BLACK
- 1-3. O-RING : SILICONE ; COLOR : BROWN
- 1-4. HDMI:
  - 1-4-1. FRONT HOUSING: LCP
  - 1-4-2. BACK HOUSING: PBT+GF30%
  - 1-4-3. CONTACT : PHOSPHOR BRONZE
  - 1-4-4. SHELL: BRASS

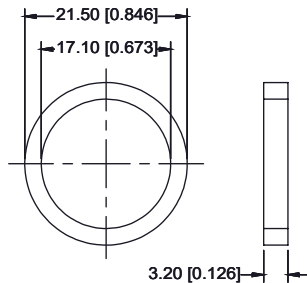
2. FINISH :

- 2-1. CONTACT : 15µ" GOLD PLATED  
SOLDER TAILS: TIN 100µ"  
UNDER PLATE : NICKEL
- 2-2. SHELL: GOLD FLASH

3. ELECTRICAL SPECIFICATIONS:

- 3-1. WATER PROOF: IPX7

OPERATING TEMPERATURE:-25°C TO +85°C



O-RING

WATERPROOF HDMI BLACK TYPE A, 180°  
(MALE)

ACAD REFERENCE NO.: 694-W19-X60-011

DRAWN:R.STA.MONICA

DATE: JAN.09/2014

CHECKED:

DATE:

PART NUMBER

694-W19-660-011

SHEET 1 OF 2

DRAWING NUMBER

694-W19-660-011

ISSUE

1



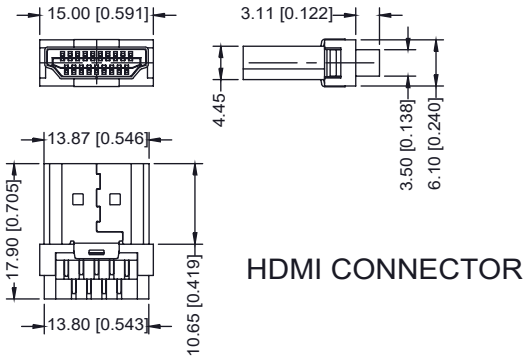
THIS SERIES FULLY CONFORMS TO THE  
EUROPEAN UNION DIRECTIVES  
2011/65/EU FOR RoHS COMPLIANCY.



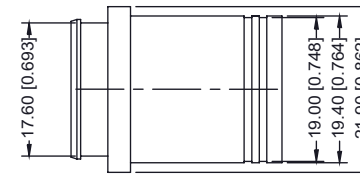
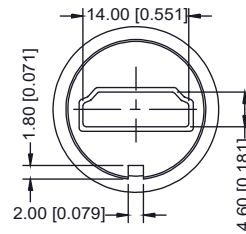
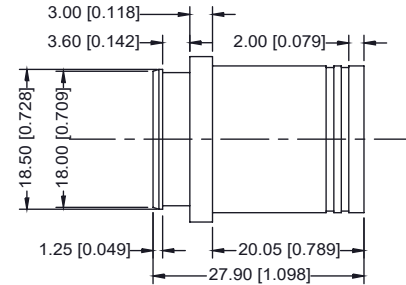
YOUR CONNECTION TO QUALITY & SERVICE

EDAC INC  
TORONTO, ONTARIO  
CANADA

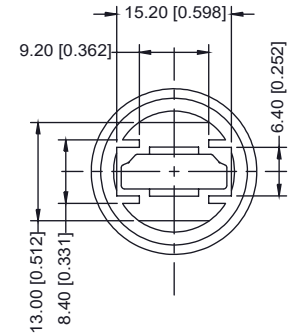
THESE DRAWINGS AND SPECIFICATIONS  
ARE THE PROPERTY OF EDAC INC. AND  
SHALL NOT BE REPRODUCED OR COPIED  
OR USED AS THE BASIS FOR THE  
MANUFACTURE OR SALE OF APPARATUS  
WITHOUT WRITTEN PERMISSION.



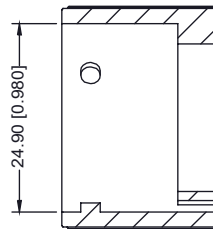
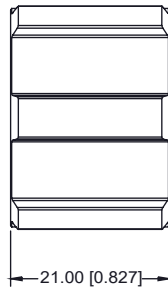
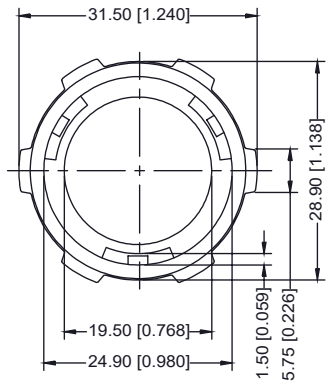
HDMI CONNECTOR



EXTERNAL HOUSING



EXTERNAL NUT



SECTION A-A

**WATERPROOF HDMI BLACK TYPE A, 180°  
(MALE)**



THIS SERIES FULLY CONFORMS TO THE EUROPEAN UNION DIRECTIVES 2011/65/EU FOR RoHS COMPLIANCY.



YOUR CONNECTION TO QUALITY & SERVICE

EDAC INC  
TORONTO, ONTARIO  
CANADA

THESE DRAWINGS AND SPECIFICATIONS ARE THE PROPERTY OF EDAC INC., AND SHALL NOT BE REPRODUCED OR COPIED OR USED AS THE BASIS FOR THE MANUFACTURE OR SALE OF APPARATUS WITHOUT WRITTEN PERMISSION.

ACAD REFERENCE NO.: 694-W19-X60-011

DRAWN: R.STA.MONICA

DATE: JAN.09/2014

CHECKED:

DATE:

PART NUMBER

694-W19-660-011

SHEET 2 OF 2

DRAWING NUMBER

694-W19-660-011

ISSUE

1