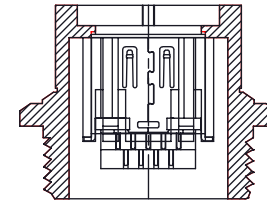
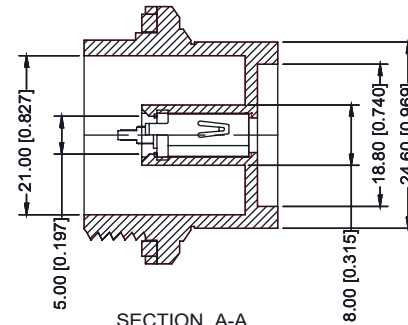
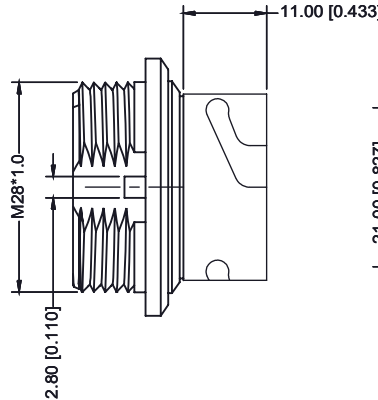
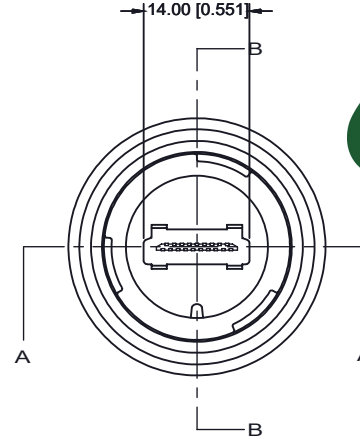
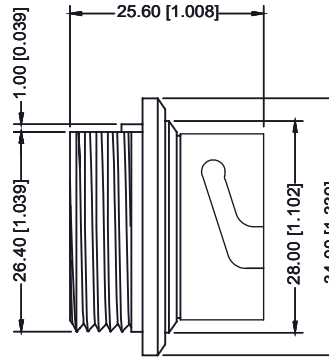
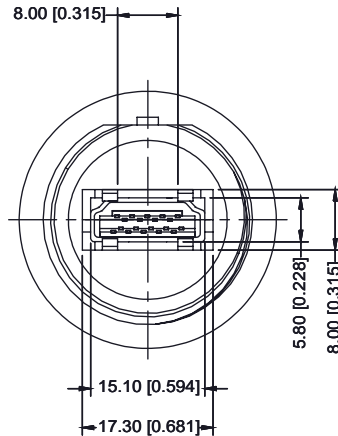


TOLERANCE UNLESS OTHERWISE SPECIFIED IN MM:
 0.0 ± 0.20 ANGLE x°
 0.00 ± 0.10
 0.000 ± 0.05

THIS IS A C.A.D. GENERATED DRAWING
 DO NOT MAKE MANUAL REVISIONS TO MASTER.



ISSUE NUMBER	①
ORIGINAL	②
REMOVE HEX NUT R.STA.MONICA JUNE.18/2014	



SECTION A-A

SECTION B-B

1. MATERIAL :

1-1. EXTERNAL HOUSING: PBT UL94V-0 ; COLOR : BLACK

1-2. HOUSING: LCP UL94V-0 ; COLOR : BLACK

1-3. CONTACT: PHOSPHOR BRONZE

1-4. SHELL: BRASS

2. FINISH :

2-1. CONTACT : 30µ" GOLD PLATED

SOLDER TAILS: BRIGHT TIN 100µ"

UNDERPLATED NICKEL OVER ALL 50µ" MIN

2-3. SHELL: GOLD FLASH

3. WATER PROOF: IPX7

WATERPROOF HDMI BLACK TYPE A, 180°
(FEMALE)



THIS SERIES FULLY CONFORMS TO THE EUROPEAN UNION DIRECTIVES 2011/65EU FOR RoHS COMPLIANCY.



YOUR CONNECTION TO QUALITY & SERVICE

EDAC INC
TORONTO, ONTARIO
CANADA

THESE DRAWINGS AND SPECIFICATIONS ARE THE PROPERTY OF EDAC INC. AND SHALL NOT BE REPRODUCED OR COPIED OR USED AS THE BASIS FOR THE MANUFACTURE OR SALE OF APPARATUS WITHOUT WRITTEN PERMISSION.

ACAD REFERENCE NO.: 694-W19-X60-012

DRAWN:R.STA.MONICA

DATE: JAN.09/2014

CHECKED:

DATE:

PART NUMBER

694-W19-660-012

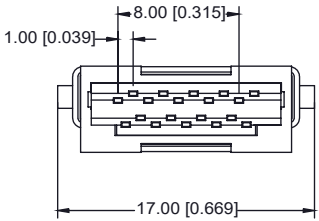
SHEET 1 OF 2

DRAWING NUMBER

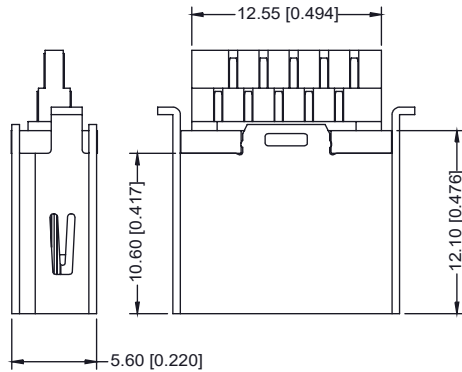
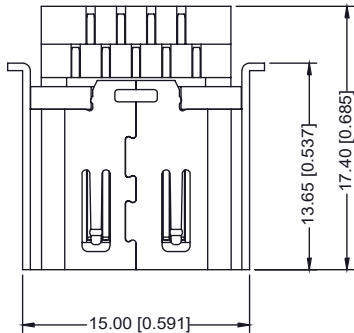
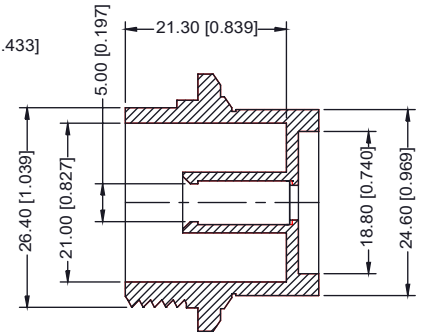
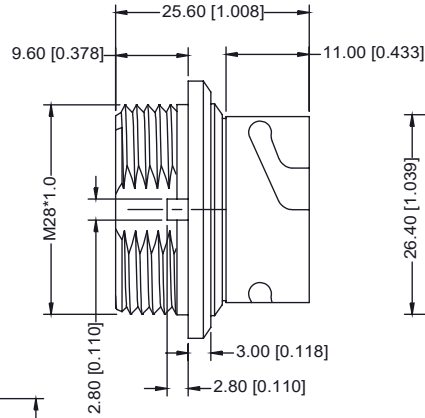
694-W19-660-012

ISSUE

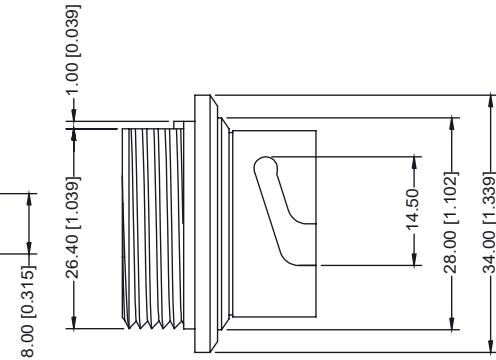
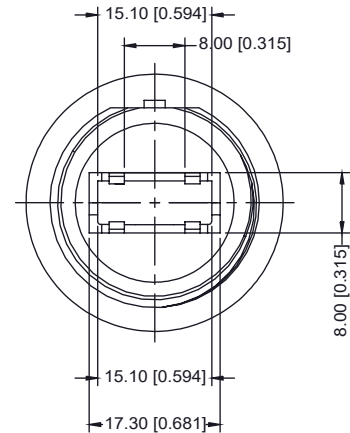
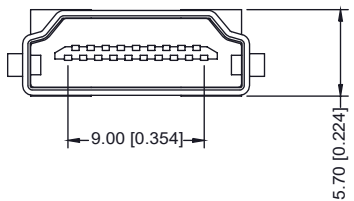
2



HDMI CONNECTOR
SCALE 2:1



EXTERNAL HOUSING



**WATERPROOF HDMI BLACK TYPE A, 180°
(FEMALE)**



THIS SERIES FULLY CONFORMS TO THE
EUROPEAN UNION DIRECTIVES
2011/65EU FOR RoHS COMPLIANCE.



YOUR CONNECTION TO QUALITY & SERVICE

EDAC INC
TORONTO, ONTARIO
CANADA

THESE DRAWINGS AND SPECIFICATIONS
ARE THE PROPERTY OF EDAC INC., AND
SHALL NOT BE REPRODUCED OR COPIED
OR USED AS THE BASIS FOR THE
MANUFACTURE OR SALE OF APPARATUS
WITHOUT WRITTEN PERMISSION.

ACAD REFERENCE NO.: 694-W19-X60-012

DRAWN: R.STA.MONICA

DATE: JAN.09/2014

CHECKED:

DATE:

PART NUMBER

694-W19-660-012

SHEET 2 OF 2

DRAWING NUMBER

694-W19-660-012

ISSUE

2