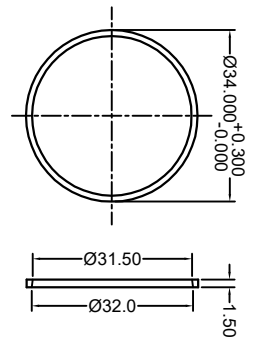
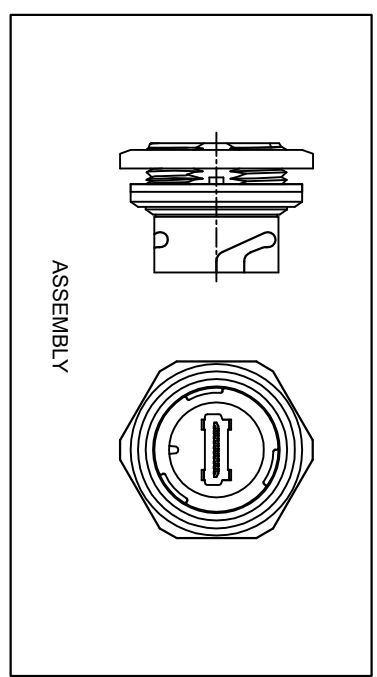
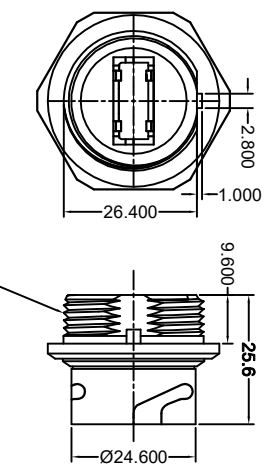


THIS IS A C.A.D. GENERATED DRAWING
DO NOT MAKE MANUAL REVISIONS TO MASTER

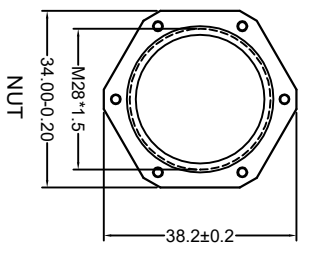
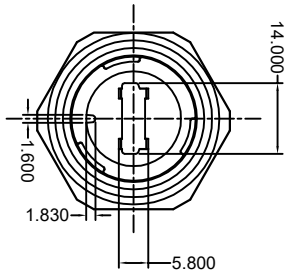
| TOLERANCE UNLESS OTHERWISE SPECIFIED | |
|--|-------|
| X | ±0.20 |
| XX | ±0.10 |
| XXX | ±0.05 |



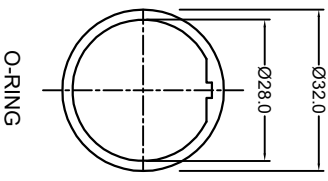
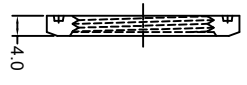
RING



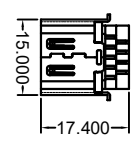
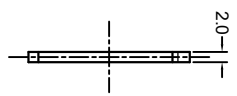
M28*1.5
BODY



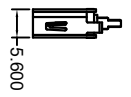
NUT



O-RING



HDMI



NOTES:

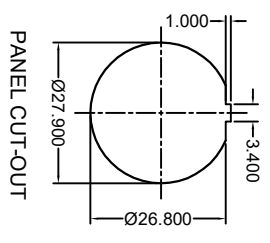
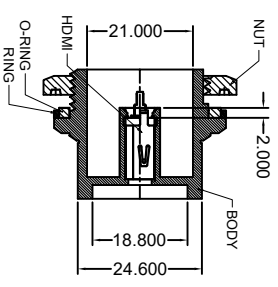
MATERIAL:

- BODY: PBT, BLACK COLOUR, UL94V-0
- RING: PBT, BLACK COLOUR, UL94V-0
- O-RING: SILICONE, BLACK COLOUR
- NUT: PBT, BLACK COLOUR, UL94V-0
- HDMI: HDMI:
- CONTACT: BRONZE, 30µ" GOLD PLATING ON CONTACT AREA, MATTE TIN ON SOLDER AREA, ALL OVER NICKEL UNDER-PLATING
- SHELL: BRASS, GOLD FLASH PLATING ON CONTACT AREA, ALL OVER NICKEL UNDER-PLATING

OPERATING TEMPERATURE: -20°C ~ 85°C

- CURRENT RATING: 0.5A
- VOLTAGE RATING: 40V
- WATERPROOFING: IPX8

SECTION A-A
ASSEMBLY



PANEL CUT-OUT

WATERPROOF HDMI BLACK TYPE A,
PANEL MOUNT (FEMALE)

EDRHC
EDAC INC
TORONTO, ONTARIO
CANADA
YOUR CONNECTION TO QUALITY & SERVICE

THESE DRAWINGS AND SPECIFICATIONS ARE THE PROPERTY OF EDAC INC. AND SHALL NOT BE REPRODUCED OR COPIED OR USED AS THE BASIS FOR THE MANUFACTURE OR SALE OF APPARATUS WITHOUT WRITTEN PERMISSION.

| | | |
|---------------------------------|-----------------|-------------|
| ACAD REFERENCE NO.: | 694-W19-280-015 | |
| DRAWN: N.B. | DATE: | JUN 28/2021 |
| CHECKED: R.S.M. | DATE: | JUN 28/2021 |
| SCALE: (IN C.A.D. 1:1) | SHEET | 1 OF 1 |
| DRAWING NUMBER: 694-W19-660-015 | ISSUE | |
| PART NUMBER: 694-W19-660-015 | 1 | |



THIS SERIES FULLY CONFORMS TO THE EUROPEAN UNION DIRECTIVES 2011/65/EU FOR ROHS COMPLIANCY.