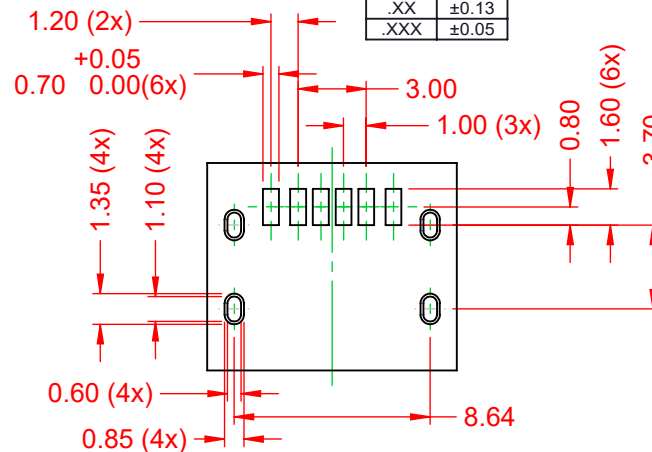
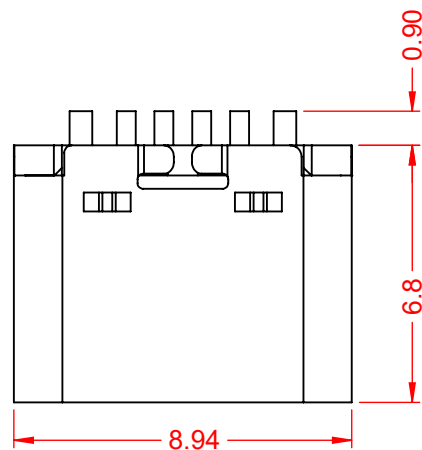


THIS IS A C.A.D. GENERATED DRAWING
DO NOT MAKE MANUAL REVISIONS TO MASTER.

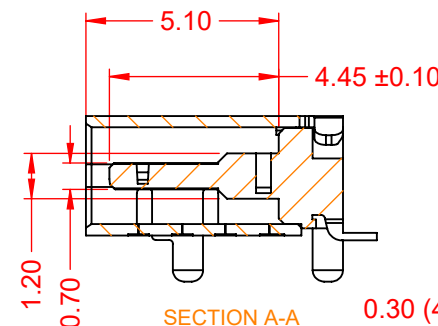
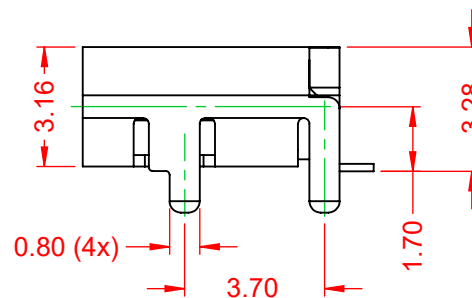
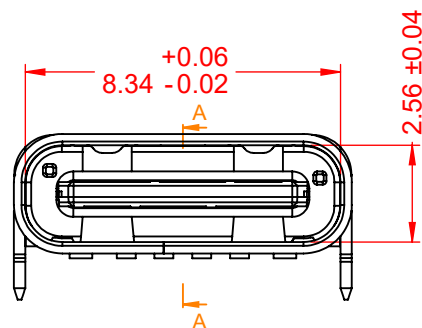
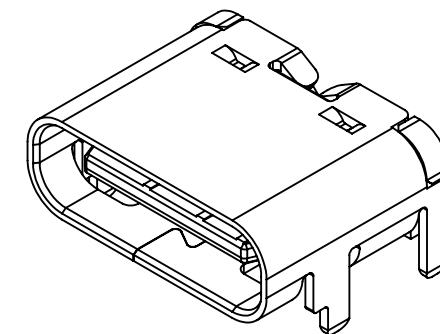


TOLERANCE
UNLESS OTHERWISE
SPECIFIED

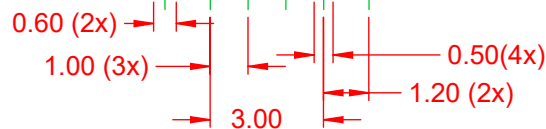
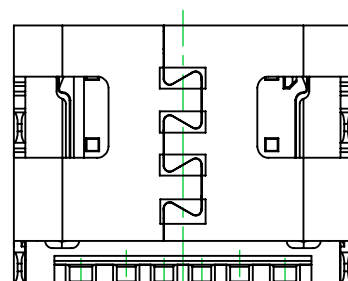
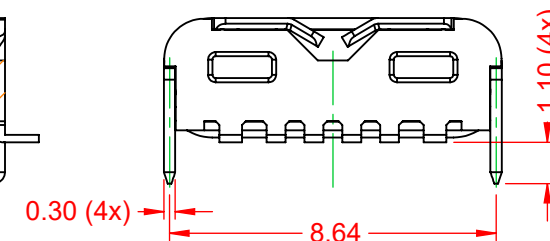
.X	±0.25
.XX	±0.13
.XXX	±0.05



RECOMMENDED P.C.B LAYOUT
TOP VIEW
SCALE 3:1



SECTION A-A



NOTE:

ELECTRICAL SPECIFICATIONS:

CURRENT RATING:	3A
CONTACT RESISTANCE:	40mΩ MAX.
INSULATOR RESISTANCE:	100MΩ min.
DIELECTRIC WITHSTANDING VOLTAGE:	100V AC
OPERATING TEMPERATURE:	-40°C ~ 85°C

MATERIAL & FINISH:

SHELL:	STAINLESS STEEL, NICKEL PLATING
HOUSING:	LCP, BLACK IN COLOUR, UL94V-0
CONTACTS:	COPPER ALLOY, 5µ" GOLD PLATED



THIS SERIES FULLY CONFORMS TO
THE EUROPEAN UNION DIRECTIVES
2011/65/EU FOR RoHS COMPLIANCY.



YOUR CONNECTION TO QUALITY & SERVICE

690 SERIES RECEPTACLES
USB TYPE-C 6 PIN OPTION

EDAC INC
TORONTO, ONTARIO
CANADA

THESE DRAWINGS AND SPECIFICATIONS
ARE THE PROPERTY OF EDAC INC., AND
SHALL NOT BE REPRODUCED, OR COPIED
OR USED AS THE BASIS FOR THE
MANUFACTURE OR SALE OF APPARATUS
WITHOUT WRITTEN PERMISSION.

ACAD REFERENCE NO.: 698A106-162-211	
DRAWN: C.B	DATE: December 21, 2020
CHECKED:	DATE:
SCALE: 5:1	SHEET 1 OF 1
DRAWING NUMBER: 698A106-162-211	ISSUE
PART NUMBER: 698A106-162-211	1