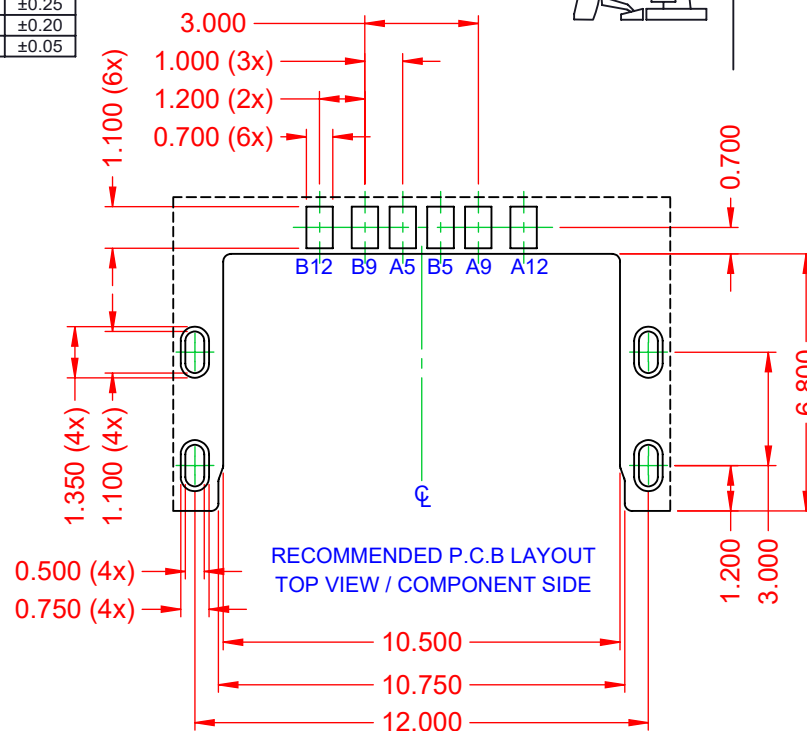


TOLERANCE UNLESS OTHERWISE SPECIFIED	
.X	±0.25
.XX	±0.20
.XXX	±0.05

THIS IS A C.A.D. GENERATED DRAWING  
DO NOT MAKE MANUAL REVISIONS TO MASTER.



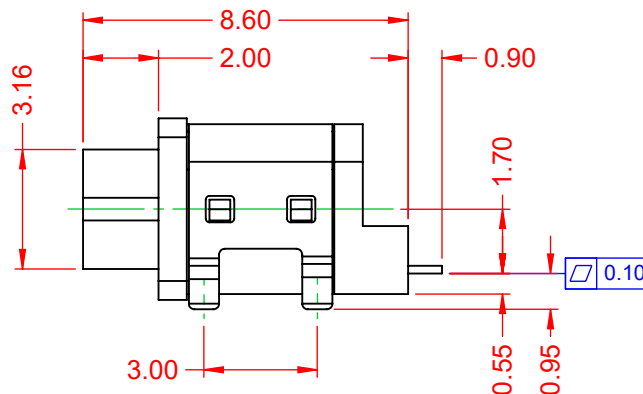
ISSUE NUMBER	
ORIGINAL	1



**NOTE:**  
**ELECTRICAL SPECIFICATIONS:**  
 CURRENT RATING: 3A  
 CONTACT RESISTANCE: 40mΩ MAX.  
 INSULATOR RESISTANCE: 100MΩ min.  
 DIELECTRIC WITHSTANDING VOLTAGE: 100V AC  
 OPERATING TEMPERATURE: -40 °C ~ 85 °C

PIN	SIGNAL
B12	GND
B9	VBUS
B5	CC2
A5	CC1
A9	VBUS
A12	GND

**MATERIAL & FINISH:**  
 SHELL: STAINLESS STEEL, NICKEL PLATED  
 HOUSING: LCP, BLACK IN COLOUR, UL94V-0  
 CONTACTS: COPPER ALLOY, 5µ" GOLD PLATED



## USB TYPE-C 6 PIN - WATER RESISTANT RIGHT ANGLE SMT



YOUR CONNECTION TO QUALITY & SERVICE

EDAC INC  
TORONTO, ONTARIO  
CANADA

THESE DRAWINGS AND SPECIFICATIONS  
ARE THE PROPERTY OF EDAC INC., AND  
SHALL NOT BE REPRODUCED, OR COPIED  
OR USED AS THE BASIS FOR THE  
MANUFACTURE OR SALE OF APPARATUS  
WITHOUT WRITTEN PERMISSION.

ACAD REFERENCE NO.: 698A106WX82-611

DRAWN: C.B

DATE: February 16, 2021

CHECKED:

DATE:

SCALE: 5:1

SHEET 1 OF 1

DRAWING NUMBER: 698A106WX82-611

ISSUE

PART NUMBER: 698A106W182-611

1



THIS SERIES FULLY CONFORMS TO  
THE EUROPEAN UNION DIRECTIVES  
2011/65/EU FOR RoHS COMPLIANCY.