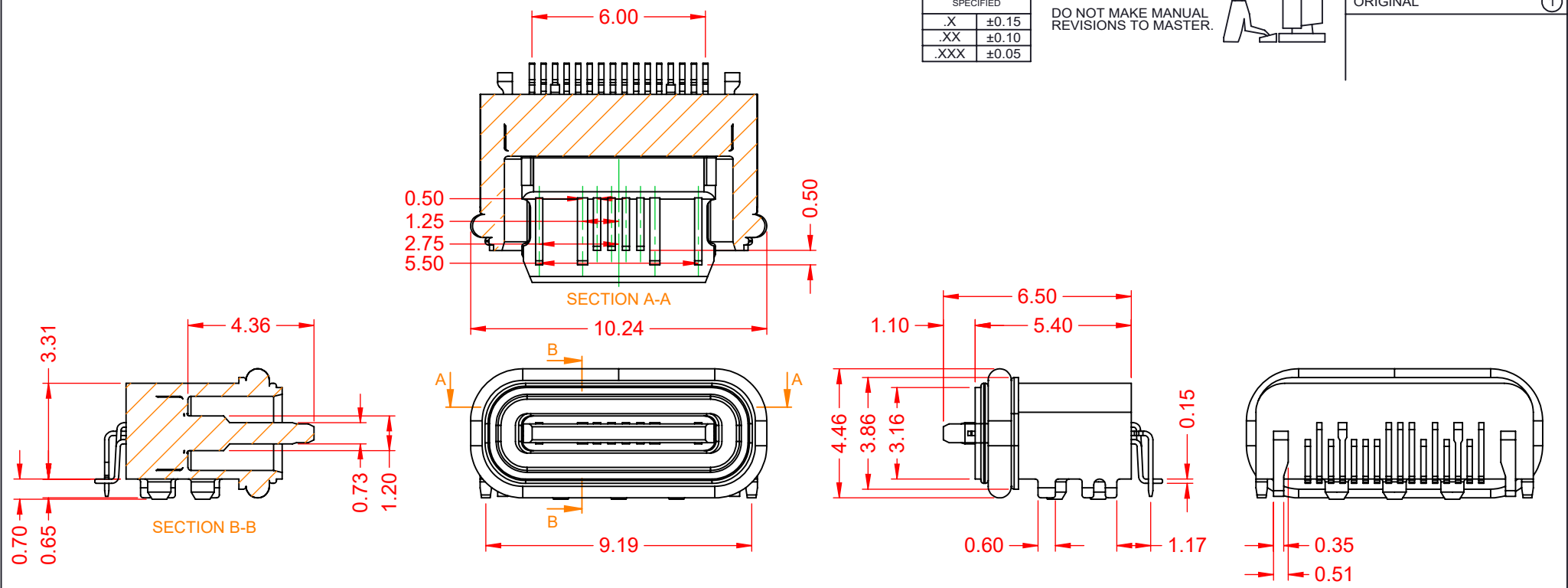


TOLERANCE UNLESS OTHERWISE SPECIFIED	
X	±0.15
.XX	±0.10
.XXX	±0.05

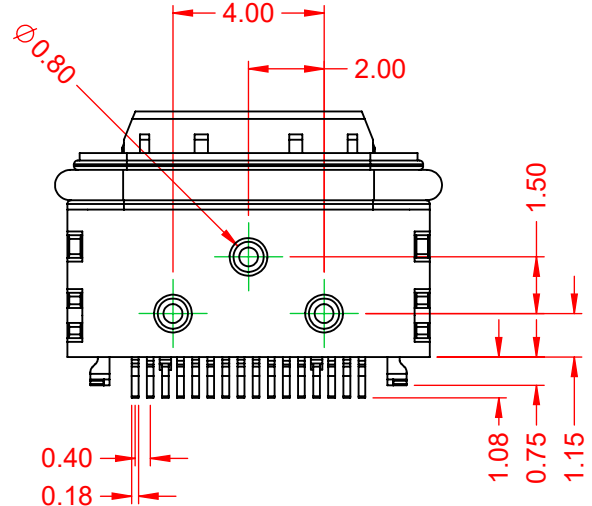
THIS IS A C.A.D. GENERATED DRAWING
DO NOT MAKE MANUAL REVISIONS TO MASTER.



ISSUE NUMBER	1
ORIGINAL	



PIN	SIGNAL	PIN	SIGNAL
A1	GND	B12	GND
A2		B11	
A3		B10	
A4	VBUS	B9	VBUS
A5	CC1	B8	SBU2
A6	Dp1	B7	Dn2
A7	Dn1	B6	Dp2
A8	SBU1	B5	CC2
A9	VBUS	B4	VBUS
A10		B3	
A11		B2	
A12	GND	B1	GND



NOTE:
ELECTRICAL SPECIFICATIONS:
CURRENT RATING: 5.0A
CONTACT RESISTANCE: 40mΩ MAX.
INSULATOR RESISTANCE: 100MΩ min.
DIELECTRIC WITHSTANDING VOLTAGE: 100V AC
OPERATING TEMPERATURE: -55°C ~ 85°C

MATERIAL & FINISH:
SHELL: STAINLESS STEEL, NICKEL PLATED
HOUSING: PA10T, BLACK IN COLOUR, UL94V-0
CONTACTS: COPPER ALLOY, 5µ" GOLD PLATED
SEAL: SILICONE, BLACK IN COLOUR

WATER RESISTANT (IP68) USB TYPE-C 2.0

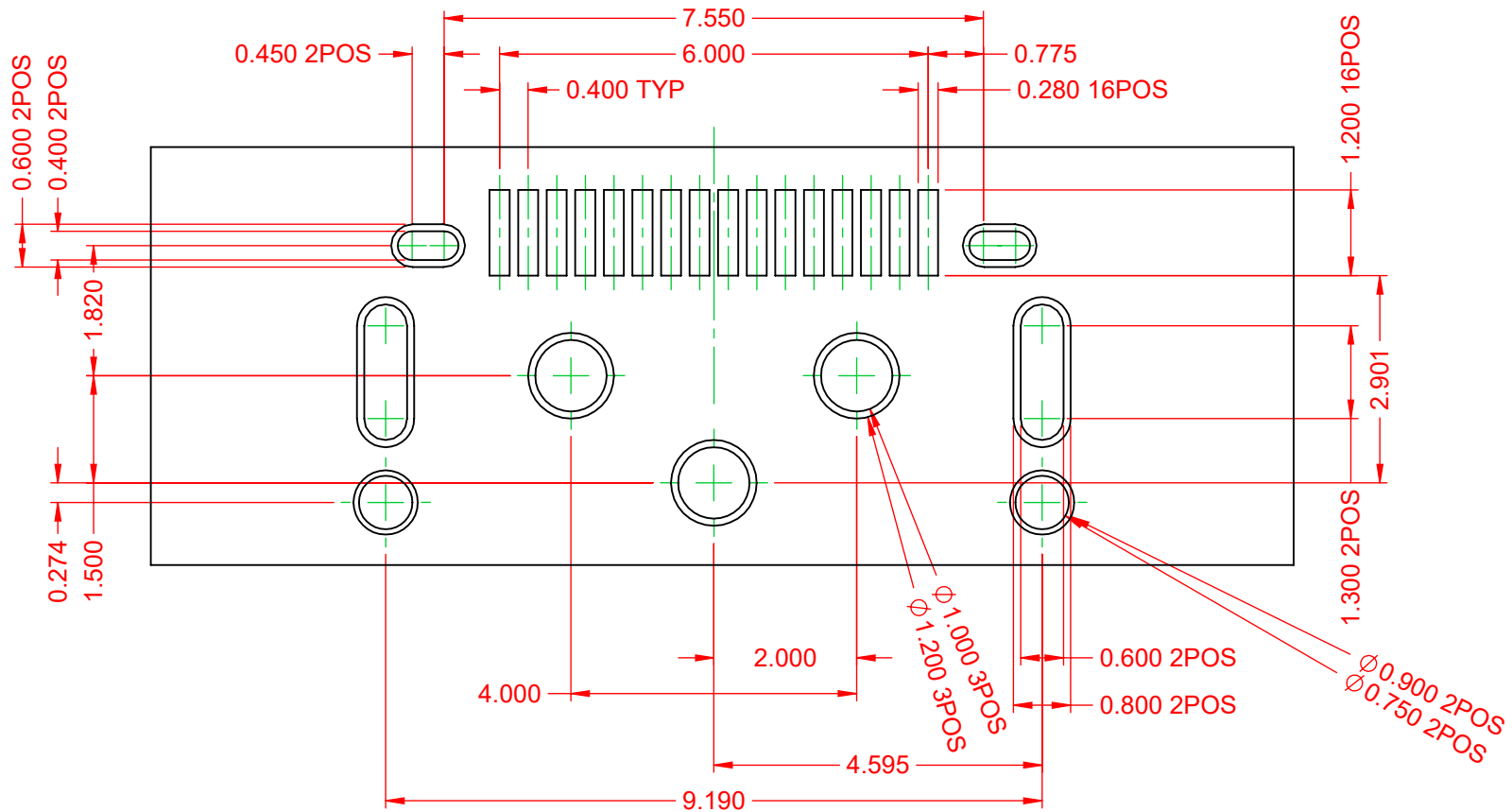
ACAD REFERENCE NO.: 698B116WX6A-661	
DRAWN: CB	DATE: October 28, 2020
CHECKED:	DATE:
SCALE: 5:1	SHEET 1 OF 2
DRAWING NUMBER: 698B116WX6A-661	ISSUE
PART NUMBER: 698B116W16A-661	1



THIS SERIES FULLY CONFORMS TO THE EUROPEAN UNION DIRECTIVES 2011/65/EU FOR RoHS COMPLIANCY.

EDAC INC
 TORONTO, ONTARIO
 CANADA
 YOUR CONNECTION TO QUALITY & SERVICE

THESE DRAWINGS AND SPECIFICATIONS ARE THE PROPERTY OF EDAC INC., AND SHALL NOT BE REPRODUCED, OR COPIED OR USED AS THE BASIS FOR THE MANUFACTURE OR SALE OF APPARATUS WITHOUT WRITTEN PERMISSION.



RECOMMENDED P.C.B LAYOUT
TOP VIEW / COMPONENT SIDE

WATER RESISTANT (IP68) USB TYPE-C 2.0

ACAD REFERENCE NO.: 698B116WX6A-661	
DRAWN: C.B	DATE: October 28, 2020
CHECKED:	DATE:
SCALE: 10:1	SHEET 2 OF 2
DRAWING NUMBER: 698B116WX6A-661	ISSUE
PART NUMBER: 698B116W16A-661	1



THIS SERIES FULLY CONFORMS TO THE EUROPEAN UNION DIRECTIVES 2011/65/EU FOR RoHS COMPLIANCY.



YOUR CONNECTION TO QUALITY & SERVICE

EDAC INC
TORONTO, ONTARIO
CANADA

THESE DRAWINGS AND SPECIFICATIONS ARE THE PROPERTY OF EDAC INC., AND SHALL NOT BE REPRODUCED, OR COPIED OR USED AS THE BASIS FOR THE MANUFACTURE OR SALE OF APPARATUS WITHOUT WRITTEN PERMISSION.