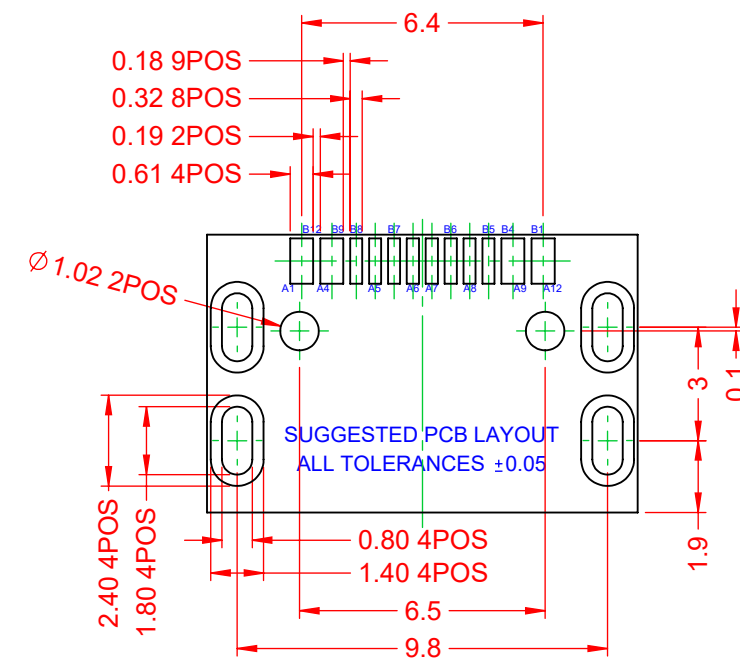
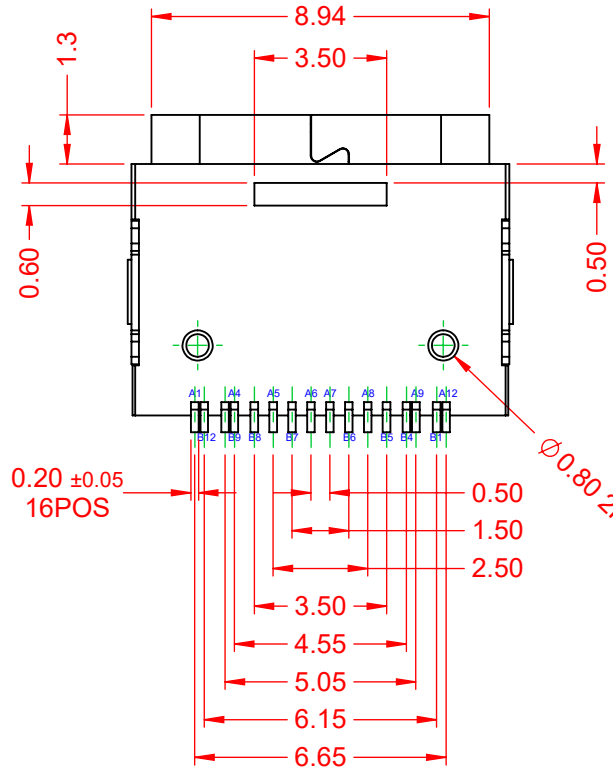
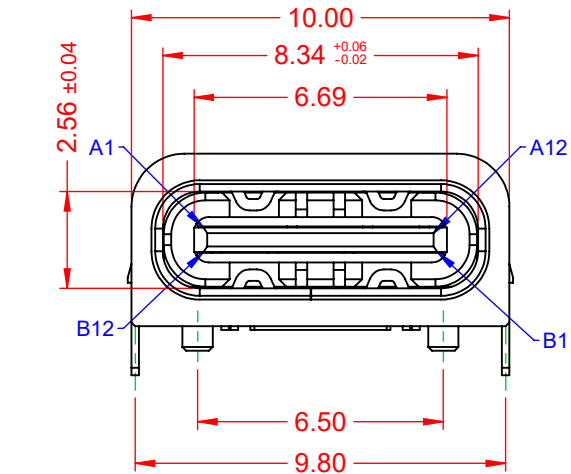


TOLERANCE UNLESS OTHERWISE SPECIFIED	
.X	±0.25
.XX	±0.15
.XXX	±0.05

THIS IS A C.A.D. GENERATED DRAWING
DO NOT MAKE MANUAL REVISIONS TO MASTER.



ISSUE NUMBER	
ORIGINAL	①



NOTES:
MATERIAL SPECS:
CONTACTS: COPPER ALLOY
MID-PLATE: STAINLESS STEEL
FRONT SHELL: STAINLESS STEEL
HOUSING: HIGH TEMPERATURE RESISTANT PLASTIC, UL94V-0

PLATING:
CONTACTS: Ni 50µ" min. UNDER PLATING ALL OVER,
GOLD FLASH PLATING ON CONTACT AREA
FRONT SHELL: Ni 30µ" min. PLATING ALL OVER

ELECTRICAL:
CURRENT RATING: 3.0A
VOLTAGE RATING: 5.0V
MEETS LLCR SPECIFICATIONS
INSULATOR: 100MΩ/min.
CONTACT RESISTANCE: 40mΩ/PIN MAX.

ENVIRONMENTAL:
OPERATING TEMPERATURE: -25°C ~ 85°C
IR REFLOW:
DIELECTRIC
WITHSTANDING VOLTAGE: 100V AC FOR 60s
CAN BE MAINTAINED AT 260°C FOR 10s

MECHANICAL:
INSERTION FORCE: 0.5 ~ 2.0KgF
REMOVAL FORCE: 0.8 ~ 2.0KgF
DURABILITY: 10000 CYCLES

PIN No.	SIGNAL NAME	PIN No.	SIGNAL NAME
A1	GND	B12	GND
A2		B11	
A3		B10	
A4	VBUS	B9	VBUS
A5	CC1	B8	SBU2
A6	D+	B7	D-
A7	D-	B6	D+
A8	SBU1	B5	CC2
A9	VBUS	B4	VBUS
A10		B3	
A11		B2	
A12	GND	B1	GND

USB Type-C 16 Pin Water Resistant IPX7 Connector		ACAD REFERENCE NO.: 698B116WX63-601	
		DRAWN: PM	DATE: November 2, 2020
EDAC EDAC INC TORONTO, ONTARIO CANADA YOUR CONNECTION TO QUALITY & SERVICE		CHECKED:	
		DATE:	
THESE DRAWINGS AND SPECIFICATIONS ARE THE PROPERTY OF EDAC INC., AND SHALL NOT BE REPRODUCED, OR COPIED OR USED AS THE BASIS FOR THE MANUFACTURE OR SALE OF APPARATUS WITHOUT WRITTEN PERMISSION.		SCALE: 5:1	SHEET 1 OF 1
		DRAWING NUMBER: 698B116WX63-601	ISSUE 1
		PART NUMBER: 698B116W263-601	1

